

**Port of Barcelona traffic statistics**

**Accumulated data December 2012**

**Statistics Service**

## Index

---

### Traffic indicators

Total traffic	3
Breakdown of traffic. I	4
Breakdown of traffic. II	5
Monthly evolution of traffic	6

### Container traffic

TEU evolution	7
Container traffic (TEU)	8

### Passenger traffic

Passenger traffic	9
Passenger classification	10

### Automobile traffic

Automobile traffic	11
--------------------	----

### Short Sea Shipping traffic (SSS)

SSS Goods classification	12
SSS General cargo and Motorways of the sea (MoS)	13
SSS Ranking countries	14

### Vessel traffic

Vessel traffic	15
----------------	----

### Goods traffic

Mode of packaging and navigation	16
4.3.7 goods classification	17
Goods ranking	18
Goods classification by mode of packaging	19

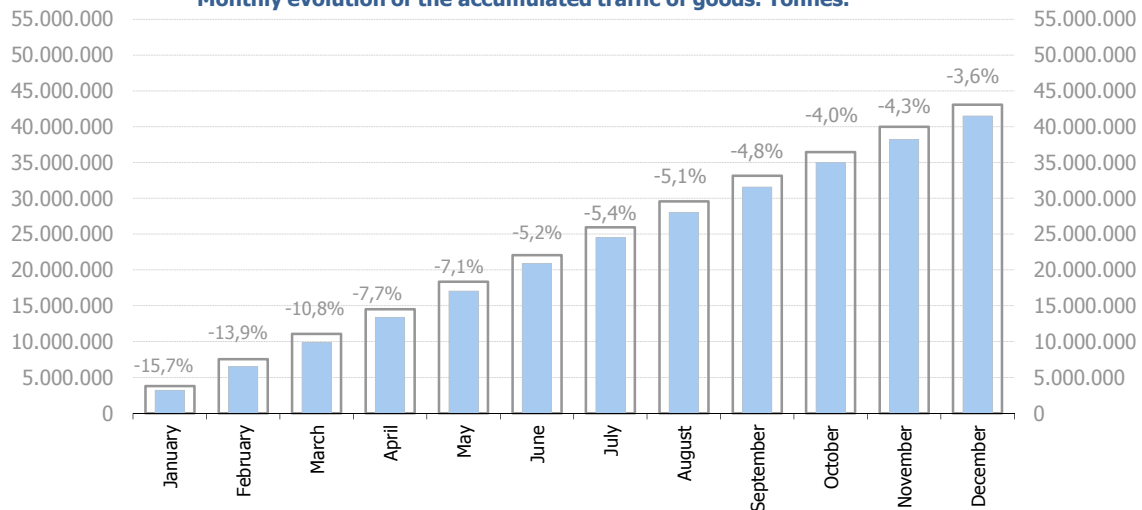
### Traffic by origin and destination

Geographical areas (Tonnes)	20
Geographical areas (TEU)	21
Countries by mode of packaging. Load	22
Countries by mode of packaging. Unloading	23
Total countries by mode of packaging	24

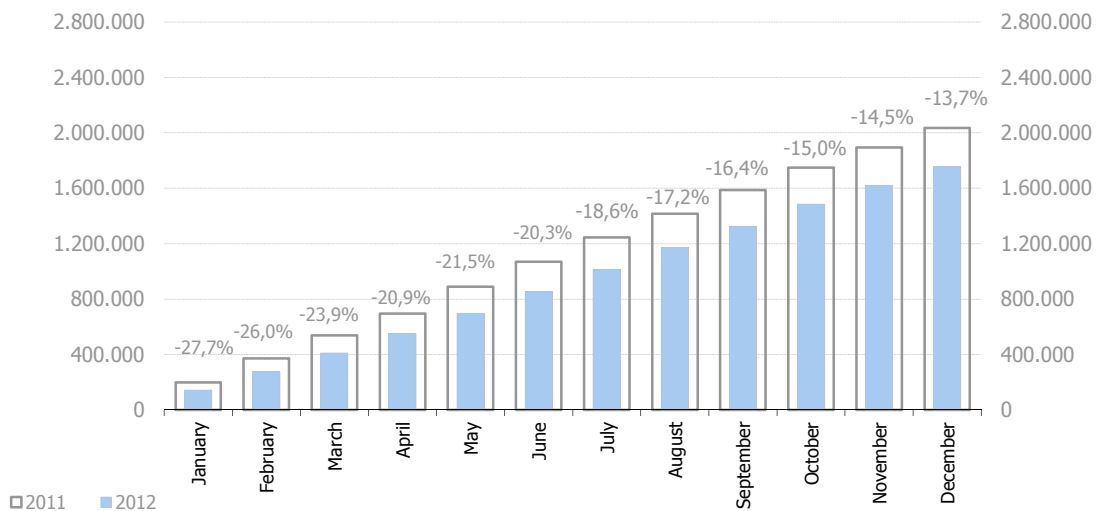
# TRAFFIC INDICATORS

Total traffic	Monthly accumulated			% 12-11 accum. November	% 12-11 accum. October	Total traffic 2011
	2011	2012	%			
<b>Total throughput (t)</b>	<b>43.047.708</b>	<b>41.487.423</b>	<b>-3,6%</b>	<b>-4,4%</b>	<b>-4,0%</b>	<b>43.047.708</b>
Food supplying	1.222.830	1.080.220	-11,7%	-11,2%	-6,9%	1.222.830
Fishing	3.036	2.800	-7,8%	-16,8%	-5,8%	3.036
<b>TOTAL TRAFFIC (t)</b>	<b>44.273.574</b>	<b>42.570.442</b>	<b>-3,8%</b>	<b>-4,6%</b>	<b>-4,1%</b>	<b>44.273.574</b>
<b>TEU</b>	<b>2.034.693</b>	<b>1.756.429</b>	<b>-13,7%</b>	<b>-14,6%</b>	<b>-15,1%</b>	<b>2.034.693</b>
<b>Vessels (units)</b>	<b>7.990</b>	<b>7.757</b>	<b>-2,9%</b>	<b>-2,9%</b>	<b>-2,5%</b>	<b>7.990</b>
<b>Passengers (units)</b>	<b>3.828.511</b>	<b>3.422.519</b>	<b>-10,6%</b>	<b>-11,5%</b>	<b>-12,0%</b>	<b>3.828.511</b>
<b>Automobiles (units)</b>	<b>630.108</b>	<b>664.931</b>	<b>5,5%</b>	<b>4,5%</b>	<b>4,7%</b>	<b>630.108</b>

Monthly evolution of the accumulated traffic of goods. Tonnes.



Monthly evolution of the accumulated traffic of goods. TEU.



## TRAFFIC INDICATORS

Breakdown of traffic. I	Monthly accumulated			% 12-11 accum. November	% 12-11 accum. October	% of total accum. 2012
	2011	2012	%			
<b>Goods indicators by type of packaging (t)</b>	<b>43.047.708</b>	<b>41.487.423</b>	<b>-3,6%</b>	<b>-4,4%</b>	<b>-4,0%</b>	<b>100,0%</b>
<b>Liquid bulk</b>	<b>10.763.501</b>	<b>10.431.485</b>	<b>-3,1%</b>	<b>-4,7%</b>	<b>-3,4%</b>	<b>25,1%</b>
<b>Hydrocarbons</b>	<b>8.955.170</b>	<b>8.110.456</b>	<b>-9,4%</b>	<b>-11,6%</b>	<b>-9,5%</b>	<b>19,5%</b>
Natural gas	4.100.603	3.841.334	-6,3%	-11,7%	-8,7%	9,3%
Diesel oils	2.382.815	2.277.696	-4,4%	-4,0%	-7,6%	5,5%
Petrol	1.573.923	1.206.777	-23,3%	-24,9%	-14,3%	2,9%
Fuel oil	833.680	696.536	-16,5%	-10,5%	-15,5%	1,7%
Other petroleum products	38.714	57.993	49,8%	58,2%	91,7%	0,1%
Remainder	25.434	30.121	18,4%	12,9%	22,8%	0,1%
<b>Other liquid bulk</b>	<b>1.808.332</b>	<b>2.321.030</b>	<b>28,4%</b>	<b>30,5%</b>	<b>25,7%</b>	<b>5,6%</b>
Biofuel	452.851	802.655	77,2%	95,7%	94,3%	1,9%
Chemical products	472.110	686.698	45,5%	-8,3%	-12,6%	1,7%
Oils and fats	738.942	682.506	-7,6%	42,3%	37,4%	1,6%
Other petroleum products	98.688	108.966	10,4%	9,1%	1,9%	0,3%
Natural/artificial fertilizer	37.304	31.342	-16,0%	-19,1%	-19,1%	0,1%
Remainder	8.437	8.862	5,0%	6,5%	23,6%	0,0%
<b>Dry bulk</b>	<b>3.520.321</b>	<b>4.685.744</b>	<b>33,1%</b>	<b>34,4%</b>	<b>32,7%</b>	<b>11,3%</b>
<b>Special installation</b>	<b>2.802.952</b>	<b>4.083.436</b>	<b>45,7%</b>	<b>47,3%</b>	<b>45,8%</b>	<b>9,8%</b>
Soya bean	1.510.364	1.500.537	-0,7%	-3,6%	-6,6%	3,6%
Cement and clinker	282.829	1.272.090	349,8%	336,6%	325,0%	3,1%
Cereals and flours	398.781	612.375	53,6%	66,5%	56,1%	1,5%
Potashes	561.135	502.881	-10,4%	-9,8%	-10,1%	1,2%
Feedstuffs and fodder	39.154	192.106	390,6%	459,9%	450,2%	0,5%
Remainder	10.689	3.447	-67,8%	-100,0%	-100,0%	0,0%
<b>Without special installation</b>	<b>717.370</b>	<b>602.307</b>	<b>-16,0%</b>	<b>-16,0%</b>	<b>-18,0%</b>	<b>1,5%</b>
Scrap iron	401.029	318.630	-20,5%	-13,5%	-14,8%	0,8%
Common salt	104.094	106.752	2,6%	0,8%	-16,3%	0,3%
Other non-metallic minerals	40.291	67.258	66,9%	55,0%	80,3%	0,2%
Coal	119.342	50.139	-58,0%	-58,0%	-58,0%	0,1%
Chemical products	22.962	36.254	57,9%	45,7%	45,7%	0,1%
Remainder	29.652	23.273	-21,5%	-66,6%	-57,8%	0,1%
<b>General cargo</b>	<b>28.763.886</b>	<b>26.370.194</b>	<b>-8,3%</b>	<b>-9,0%</b>	<b>-8,7%</b>	<b>63,6%</b>
<b>Containerized</b>	<b>19.860.623</b>	<b>17.401.082</b>	<b>-12,4%</b>	<b>-13,7%</b>	<b>-13,9%</b>	<b>41,9%</b>
Tares of containers (O/D+Transit)	4.090.928	3.537.777	-13,5%	-14,4%	-14,9%	8,5%
Chemical products	3.439.599	3.157.365	-8,2%	-8,9%	-8,7%	7,6%
Other cargo by type	2.506.672	1.966.740	-21,5%	-22,7%	-22,6%	4,7%
Paper and pulp	1.361.919	1.278.138	-6,2%	-10,4%	-12,3%	3,1%
Machinery and spare parts	1.321.967	1.156.154	-12,5%	-14,1%	-14,2%	2,8%
Remainder	7.139.539	6.304.908	-11,7%	-12,9%	-13,0%	15,2%
<b>Non-containerized</b>	<b>8.903.263</b>	<b>8.969.111</b>	<b>0,7%</b>	<b>1,5%</b>	<b>3,2%</b>	<b>21,6%</b>
Tare of platform and wagons (Ro-ro)	3.505.995	3.523.084	0,5%	1,2%	2,1%	8,5%
Other cargo by type	1.689.123	1.585.037	-6,2%	-5,2%	-2,7%	3,8%
Automobiles and parts	1.105.912	1.099.626	-0,6%	-2,1%	-3,6%	2,7%
Other food products	687.310	785.752	14,3%	14,7%	15,8%	1,9%
Iron and steel products	745.314	781.217	4,8%	7,7%	16,4%	1,9%
Remainder	1.169.609	1.194.396	2,1%	4,0%	6,4%	2,9%

## TRAFFIC INDICATORS

Breakdown of traffic. II	Monthly accumulated			Last 12 months	Total traffic 2011	% 12 months-2011
	2011	2012	%			

### Goods indicators by navigation and operation.

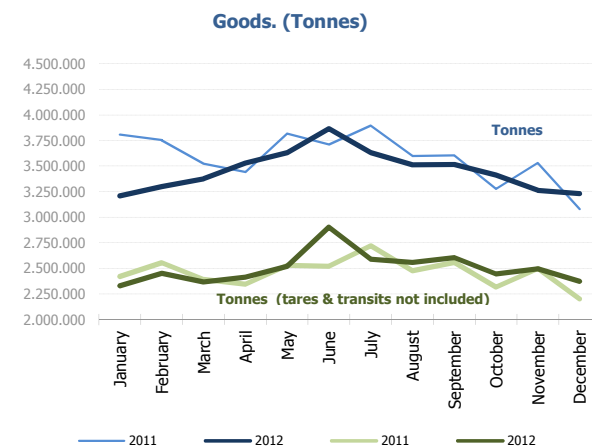
<b>Navigation (t)</b>	<b>43.047.708</b>	<b>41.487.423</b>	<b>-3,6%</b>	<b>41.487.423</b>	<b>43.047.708</b>	<b>-3,6%</b>
Domestic	6.696.175	6.920.236	3,3%	6.920.236	6.696.175	3,3%
Foreign	36.351.533	34.567.186	-4,9%	34.567.186	36.351.533	-4,9%
<b>Operation (t)</b>	<b>43.047.708</b>	<b>41.487.423</b>	<b>-3,6%</b>	<b>41.487.423</b>	<b>43.047.708</b>	<b>-3,6%</b>
Loaded	14.660.045	16.515.024	12,7%	16.515.024	14.660.045	12,7%
Unloaded	21.134.133	19.724.466	-6,7%	19.724.466	21.134.133	-6,7%
Transit	7.253.530	5.247.932	-27,6%	5.247.932	7.253.530	-27,6%

### Goods indicators by main units.

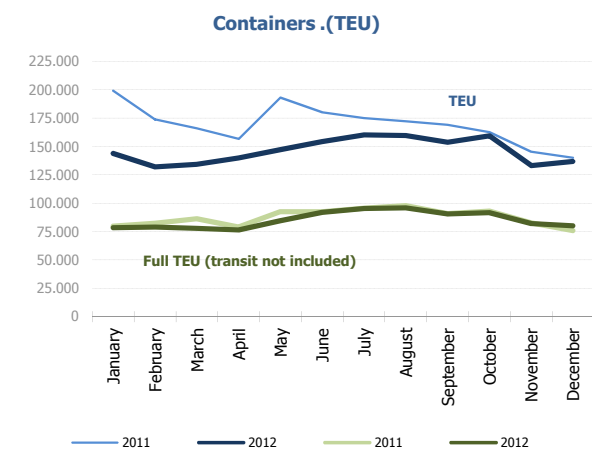
<b>Containers (TEU)</b>	<b>2.034.693</b>	<b>1.756.429</b>	<b>-13,7%</b>	<b>1.756.429</b>	<b>2.034.693</b>	<b>-13,7%</b>
TEU O/D	1.364.431	1.315.979	-3,6%	1.315.979	1.364.431	-3,6%
TEU transit	670.262	440.450	-34,3%	440.450	670.262	-34,3%
Containerized tonnes	19.860.623	17.401.082	-12,4%	17.401.082	19.860.623	-12,4%
Level of containerization	69,05%	65,99%	-4,4%	65,99%	69,05%	-4,4%
<b>Automobiles (u)</b>	<b>630.108</b>	<b>664.931</b>	<b>5,5%</b>	<b>664.931</b>	<b>630.108</b>	<b>5,5%</b>
Loaded	401.258	430.907	7,4%	430.907	401.258	7,4%
Unloaded	155.698	121.958	-21,7%	121.958	155.698	-21,7%
Transit	73.152	112.066	53,2%	112.066	73.152	53,2%
<b>Vessels (u)</b>	<b>7.990</b>	<b>7.757</b>	<b>-2,9%</b>	<b>7.757</b>	<b>7.990</b>	<b>-2,9%</b>
Number of calls	7.990	7.757	-2,9%	7.757	7.990	-2,9%
GT	265.976.546	287.421.030	8,1%	287.421.030	265.976.546	8,1%
Average tonnes by vessel	5.388	5.348	-0,7%	5.348	5.388	-0,7%
<b>Passengers (u)</b>	<b>3.828.511</b>	<b>3.422.519</b>	<b>-10,6%</b>	<b>3.422.519</b>	<b>3.828.511</b>	<b>-10,6%</b>
Regular line	1.169.820	1.013.885	-13,3%	1.013.885	1.169.820	-13,3%
Pleasure cruises	2.658.691	2.408.634	-9,4%	2.408.634	2.658.691	-9,4%

# TRAFFIC INDICATORS

Monthly evolution of traffic	Total tonnes		%		Tonnes (tares & transits not included)		%	
	2011	2012	Monthly	Accumulated	2011	2012	Monthly	Accumulated
January	3.807.790	3.211.101	-15,7%	-15,7%	2.419.781	2.330.163	-3,7%	-3,7%
February	3.754.264	3.300.485	-12,1%	-13,9%	2.556.076	2.452.165	-4,1%	-3,9%
March	3.524.887	3.375.392	-4,2%	-10,8%	2.391.121	2.366.580	-1,0%	-3,0%
April	3.442.413	3.530.393	2,6%	-7,7%	2.345.867	2.415.631	3,0%	-1,5%
May	3.819.984	3.631.136	-4,9%	-7,1%	2.531.998	2.521.411	-0,4%	-1,3%
June	3.711.391	3.865.808	4,2%	-5,2%	2.522.508	2.904.042	15,1%	1,5%
July	3.895.784	3.633.586	-6,7%	-5,4%	2.721.582	2.591.068	-4,8%	0,5%
August	3.598.141	3.513.561	-2,4%	-5,1%	2.478.227	2.559.473	3,3%	0,9%
September	3.606.259	3.516.283	-2,5%	-4,8%	2.557.821	2.605.851	1,9%	1,0%
October	3.276.101	3.414.132	4,2%	-4,0%	2.316.617	2.444.351	5,5%	1,4%
November	3.531.811	3.262.961	-7,6%	-4,3%	2.498.112	2.497.178	0,0%	1,3%
December	3.078.881	3.232.584	5,0%	-3,6%	2.200.937	2.375.391	7,9%	1,8%
<b>Total</b>	<b>43.047.708</b>	<b>41.487.423</b>			<b>29.540.646</b>	<b>30.063.303</b>		



Monthly evolution of traffic	Total TEU		%		Full TEU (transit not included)		%	
	2011	2012	Monthly	Accumulated	2011	2012	Monthly	Accumulated
January	199.157	144.081	-27,7%	-27,7%	79.973	78.558	-1,8%	-1,8%
February	173.910	131.995	-24,1%	-26,0%	82.343	78.952	-4,1%	-3,0%
March	166.259	134.458	-19,1%	-23,9%	86.467	77.858	-10,0%	-5,4%
April	156.747	140.096	-10,6%	-20,9%	79.159	76.665	-3,2%	-4,9%
May	193.069	147.481	-23,6%	-21,5%	92.594	84.791	-8,4%	-5,6%
June	180.352	154.471	-14,4%	-20,3%	92.631	92.140	-0,5%	-4,7%
July	175.173	160.423	-8,4%	-18,6%	95.814	95.457	-0,4%	-4,0%
August	172.202	159.849	-7,2%	-17,2%	97.871	95.871	-2,0%	-3,8%
September	169.317	153.908	-9,1%	-16,4%	90.979	90.591	-0,4%	-3,4%
October	162.843	159.481	-2,1%	-15,0%	93.128	91.782	-1,4%	-3,2%
November	145.443	133.328	-8,3%	-14,5%	82.673	82.290	-0,5%	-2,9%
December	140.225	136.861	-2,4%	-13,7%	75.917	80.345	5,8%	-2,3%
<b>Total</b>	<b>2.034.693</b>	<b>1.756.429</b>			<b>1.049.548</b>	<b>1.025.297</b>		



## TRAFFIC INDICATORS

### TEU evolution

Full-unloaded foreign	Full TEU		%		Full-loaded foreign	Full TEU		%		Full - Transit	Full TEU		%	
	2011	2012	Monthly	Accumulated		2011	2012	Monthly	Accumulated		2011	2012	Monthly	Accumulated
January	39.323	35.965	-8,5%	-8,5%	January	33.842	36.478	7,8%	7,8%	January	72.367	26.604	-63,2%	-63,2%
February	35.512	30.985	-12,7%	-10,5%	February	39.427	41.183	4,5%	6,0%	February	53.217	20.390	-61,7%	-62,6%
March	36.895	28.358	-23,1%	-14,7%	March	41.411	41.091	-0,8%	3,6%	March	38.092	23.239	-39,0%	-57,1%
April	36.438	33.438	-8,2%	-13,1%	April	34.222	36.192	5,8%	4,1%	April	36.383	28.498	-21,7%	-50,6%
May	41.402	36.105	-12,8%	-13,0%	May	42.643	41.325	-3,1%	2,5%	May	43.911	24.818	-43,5%	-49,4%
June	39.775	32.962	-17,1%	-13,7%	June	44.788	50.759	13,3%	4,5%	June	37.028	21.424	-42,1%	-48,4%
July	38.999	32.716	-16,1%	-14,1%	July	46.847	55.194	17,8%	6,7%	July	34.653	21.680	-37,4%	-47,2%
August	41.201	34.100	-17,2%	-14,5%	August	49.771	54.135	8,8%	7,0%	August	28.542	20.077	-29,7%	-45,7%
September	37.214	31.897	-14,3%	-14,5%	September	45.615	52.053	14,1%	7,9%	September	29.449	22.005	-25,3%	-44,1%
October	36.649	32.074	-12,5%	-14,3%	October	48.236	53.007	9,9%	8,1%	October	27.487	21.919	-20,3%	-42,5%
November	31.064	28.027	-9,8%	-14,0%	November	43.944	47.435	7,9%	8,1%	November	28.274	17.172	-39,3%	-42,3%
December	28.163	27.846	-1,1%	-13,1%	December	40.389	46.836	16,0%	8,7%	December	26.444	27.871	5,4%	-39,5%
<b>Total</b>	<b>442.632</b>	<b>384.471</b>			<b>Total</b>	<b>511.131</b>	<b>555.686</b>			<b>Total</b>	<b>455.846</b>	<b>275.697</b>		

Full-unloaded domestic	Full TEU		%		Full-loaded domestic	Full TEU		%		Empty	Empty TEU		%	
	2011	2012	Monthly	Accumulated		2011	2012	Monthly	Accumulated		2011	2012	Monthly	Accumulated
January	1.228	1.251	1,9%	1,9%	January	5.581	4.865	-12,8%	-12,8%	January	46.817	38.919	-16,9%	-16,9%
February	1.294	1.374	6,2%	4,1%	February	6.112	5.410	-11,5%	-12,1%	February	38.350	32.653	-14,9%	-16,0%
March	1.326	1.573	18,6%	9,1%	March	6.836	6.837	0,0%	-7,6%	March	41.700	33.361	-20,0%	-17,3%
April	1.402	1.253	-10,7%	3,8%	April	7.098	5.783	-18,5%	-10,7%	April	41.205	34.933	-15,2%	-16,8%
May	1.260	1.353	7,4%	4,5%	May	7.290	6.009	-17,6%	-12,2%	May	56.564	37.872	-33,0%	-20,9%
June	1.264	1.580	25,0%	7,8%	June	6.806	6.840	0,5%	-10,0%	June	50.693	40.907	-19,3%	-20,6%
July	1.300	1.242	-4,5%	6,1%	July	8.669	6.306	-27,3%	-13,1%	July	44.707	43.287	-3,2%	-18,2%
August	1.007	1.476	46,6%	10,1%	August	5.893	6.161	4,5%	-11,2%	August	45.789	43.901	-4,1%	-16,4%
September	1.373	1.275	-7,2%	8,1%	September	6.778	5.367	-20,8%	-12,3%	September	48.889	41.313	-15,5%	-16,3%
October	1.389	1.123	-19,2%	5,1%	October	6.856	5.579	-18,6%	-12,9%	October	42.228	45.780	8,4%	-14,0%
November	1.449	1.340	-7,5%	3,8%	November	6.217	5.488	-11,7%	-12,8%	November	34.497	33.867	-1,8%	-13,2%
December	1.271	1.239	-2,6%	3,3%	December	6.094	4.424	-27,4%	-13,9%	December	37.864	28.645	-24,3%	-14,0%
<b>Total</b>	<b>15.560</b>	<b>16.076</b>			<b>Total</b>	<b>80.226</b>	<b>69.065</b>			<b>Total</b>	<b>529.300</b>	<b>455.435</b>		

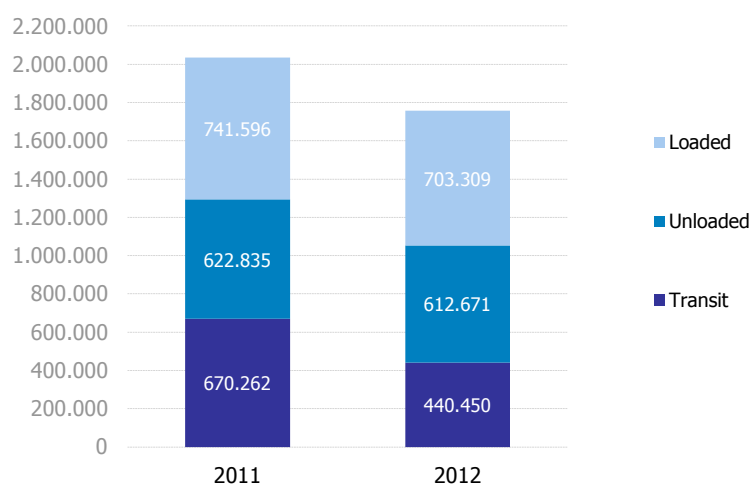
# CONTAINER TRAFFIC

## TEU

Container traffic (TEU)	Monthly accumulated 2011			Monthly accumulated 2012			%
	Domestic	Foreign	Total	Domestic	Foreign	Total	
<b>Total traffic</b>	<b>197.607</b>	<b>1.837.086</b>	<b>2.034.693</b>	<b>164.565</b>	<b>1.591.864</b>	<b>1.756.429</b>	<b>-13,7%</b>
Unloaded	100.083	914.574	1.014.657	85.539	798.446	883.984	-12,9%
Loaded	97.524	922.512	1.020.036	79.027	793.419	872.445	-14,5%

Breakdown by navigation and operation (TEU)	Monthly accumulated 2011			Monthly accumulated 2012			%
	Domestic	Foreign	Total	Domestic	Foreign	Total	
<b>Unloaded</b>	<b>97.469</b>	<b>644.127</b>	<b>741.596</b>	<b>78.972</b>	<b>624.337</b>	<b>703.309</b>	<b>-5,2%</b>
Full	80.226	511.131	591.356	69.065	555.686	624.751	5,6%
Empty	17.244	132.997	150.240	9.907	68.651	78.558	-47,7%
<b>Loaded</b>	<b>83.000</b>	<b>539.835</b>	<b>622.835</b>	<b>76.437</b>	<b>536.234</b>	<b>612.671</b>	<b>-1,6%</b>
Full	15.560	442.632	458.192	16.076	384.471	400.547	-12,6%
Empty	67.440	97.204	164.644	60.361	151.763	212.124	28,8%
<b>Transit</b>	<b>17.138</b>	<b>653.124</b>	<b>670.262</b>	<b>9.157</b>	<b>431.293</b>	<b>440.450</b>	<b>-34,3%</b>
Full	21	455.825	455.846	63	275.634	275.697	-39,5%
Empty	17.117	197.300	214.417	9.094	155.659	164.753	-23,2%
<b>Total traffic</b>	<b>197.607</b>	<b>1.837.086</b>	<b>2.034.693</b>	<b>164.565</b>	<b>1.591.864</b>	<b>1.756.429</b>	<b>-13,7%</b>
Full	95.807	1.409.587	1.505.393	85.203	1.215.791	1.300.994	-13,6%
Empty	101.801	427.500	529.300	79.362	376.073	455.435	-14,0%
% Empty	51,5%	23,3%	<b>26,0%</b>	48,2%	23,6%	<b>25,9%</b>	
% Transit	8,7%	35,6%	<b>32,9%</b>	5,6%	27,1%	<b>25,1%</b>	

General cargo distribution by operation. (TEU )

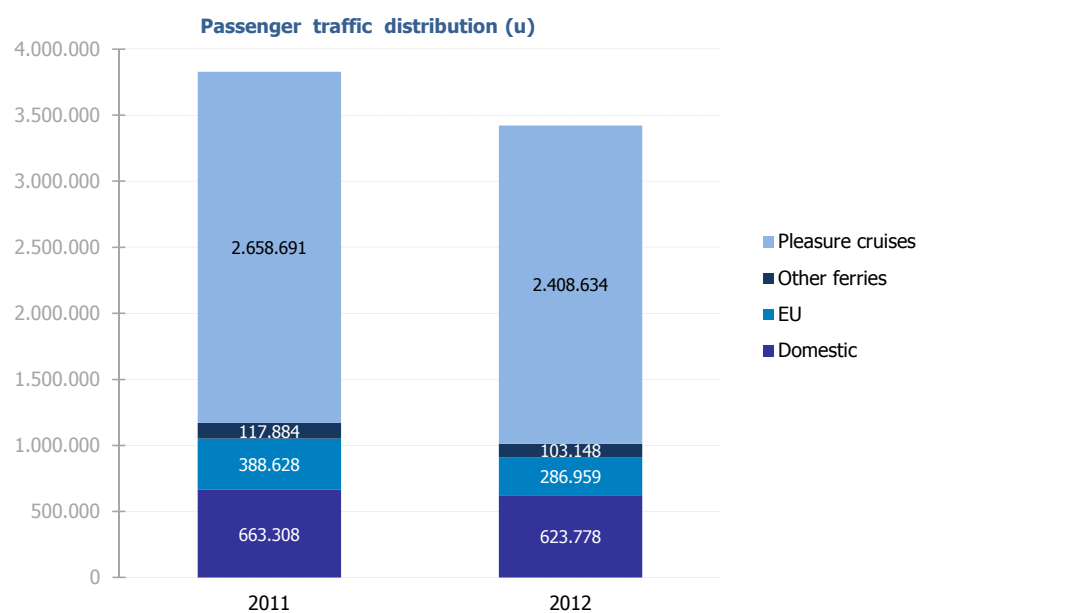




## PASSENGER TRAFFIC

Total passenger traffic (u)	Monthly accumulated			% 12-11 accum. November	% 12-11 accum. October
	2011	2012	%		
<b>Total passengers</b>	<b>3.828.511</b>	<b>3.422.519</b>	<b>-10,6%</b>	<b>-11,5%</b>	<b>-12,0%</b>
Embarkation	1.349.545	1.238.456	-8,2%	-9,1%	-9,9%
Disembarkation	1.322.897	1.213.812	-8,2%	-9,0%	-9,9%
Transit	1.156.069	970.251	-16,1%	-17,3%	-17,4%
<b>Regular line ferries</b>	<b>1.169.820</b>	<b>1.013.885</b>	<b>-13,3%</b>	<b>-13,6%</b>	<b>-13,8%</b>
Embarkation	591.662	516.527	-12,7%	-13,0%	-13,3%
Disembarkation	578.158	497.358	-14,0%	-14,1%	-14,4%
<b>Domestic</b>	663.308	623.778	-6,0%	-6,6%	-6,9%
Embarkation	341.073	322.610	-5,4%	-6,1%	-6,3%
Disembarkation	322.235	301.168	-6,5%	-7,2%	-7,5%
<b>European Union</b>	388.628	286.959	-26,2%	-26,3%	-26,6%
Embarkation	190.469	140.375	-26,3%	-26,7%	-27,0%
Disembarkation	198.159	146.584	-26,0%	-25,9%	-26,1%
<b>Other ferries</b>	117.884	103.148	-12,5%	-10,5%	-10,5%
Embarkation	60.120	53.542	-10,9%	-8,9%	-9,0%
Disembarkation	57.764	49.606	-14,1%	-12,3%	-12,1%
<b>Pleasure cruises</b>	<b>2.658.691</b>	<b>2.408.634</b>	<b>-9,4%</b>	<b>-10,6%</b>	<b>-11,2%</b>
Embarkation	757.883	721.929	-4,7%	-6,1%	-7,2%
Disembarkation	744.739	716.454	-3,8%	-5,1%	-6,5%
Transit	1.156.069	970.251	-16,1%	-17,3%	-17,4%

Total passenger calls. (u)	Monthly accumulated			% 12-11 accum. November	% 12-11 accum. October
	2011	2012	%		
<b>Total number of calls</b>	<b>3.467</b>	<b>3.135</b>	<b>-9,6%</b>	<b>-8,5%</b>	<b>-7,3%</b>
<b>Regular Line ferries</b>	2.586	2.365	-8,5%	-6,5%	-4,9%
<b>Pleasure cruises</b>	881	770	-12,6%	-14,0%	-14,1%

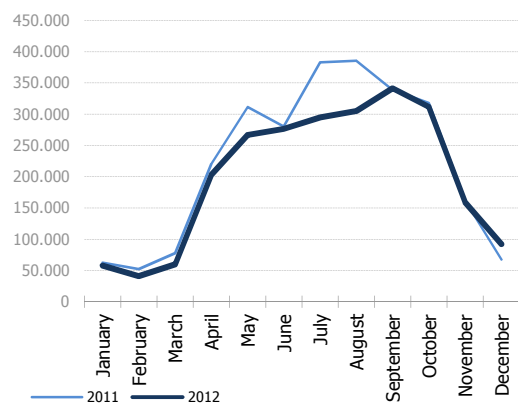


## PASSENGER CLASSIFICATION

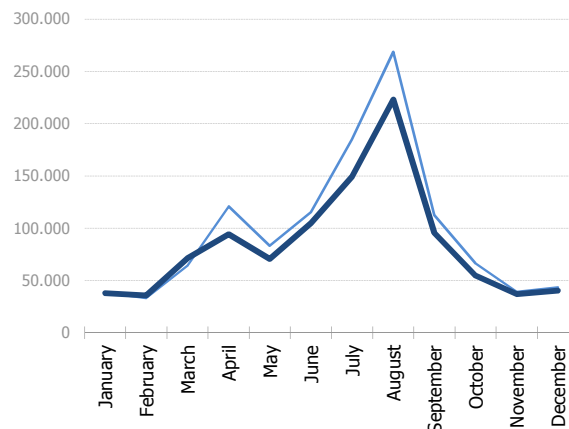
Monthly evolution of passenger traffic	Pleasure cruises		%		Regular lines ferries		%		Total passengers		%	
	2011	2012	Monthly	Accumulated	2011	2012	Monthly	Accumulated	2011	2012	Monthly	Accumulated
January	62.202	57.664	-7,3%	-7,3%	38.517	37.717	-2,1%	-2,1%	100.719	95.381	-5,3%	-5,3%
February	52.451	40.986	-21,9%	-14,0%	33.212	35.524	7,0%	2,1%	85.663	76.510	-10,7%	-7,8%
March	77.991	60.000	-23,1%	-17,6%	64.212	71.181	10,9%	6,2%	142.203	131.181	-7,8%	-7,8%
April	220.658	203.169	-7,9%	-12,5%	120.812	94.176	-22,0%	-7,1%	341.470	297.345	-12,9%	-10,4%
May	311.040	266.728	-14,2%	-13,2%	83.001	70.662	-14,9%	-9,0%	394.041	337.390	-14,4%	-11,9%
June	279.974	276.628	-1,2%	-9,9%	115.402	104.884	-9,1%	-9,0%	395.376	381.512	-3,5%	-9,6%
July	383.170	294.642	-23,1%	-13,5%	184.776	149.247	-19,2%	-12,0%	567.946	443.889	-21,8%	-13,0%
August	385.747	304.951	-20,9%	-15,1%	268.615	222.963	-17,0%	-13,4%	654.362	527.914	-19,3%	-14,6%
September	339.072	341.350	0,7%	-12,6%	112.659	95.793	-15,0%	-13,6%	451.731	437.143	-3,2%	-12,9%
October	317.847	311.819	-1,9%	-11,2%	66.139	54.618	-17,4%	-13,8%	383.986	366.437	-4,6%	-12,0%
November	161.205	158.780	-1,5%	-10,6%	39.164	36.912	-5,8%	-13,6%	200.369	195.692	-2,3%	-11,5%
December	67.334	91.917	36,5%	-9,4%	43.311	40.208	-7,2%	-13,3%	110.645	132.125	19,4%	-10,6%
<b>Total</b>	<b>2.658.691</b>	<b>2.408.634</b>			<b>1.169.820</b>	<b>1.013.885</b>			<b>3.828.511</b>	<b>3.422.519</b>		

Monthly evolution of passenger traffic

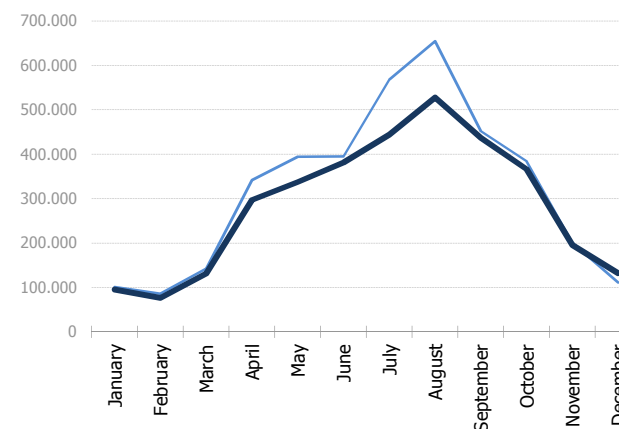
Pleasure cruises (u)



Regular lines ferries (u)



Total passengers (u)

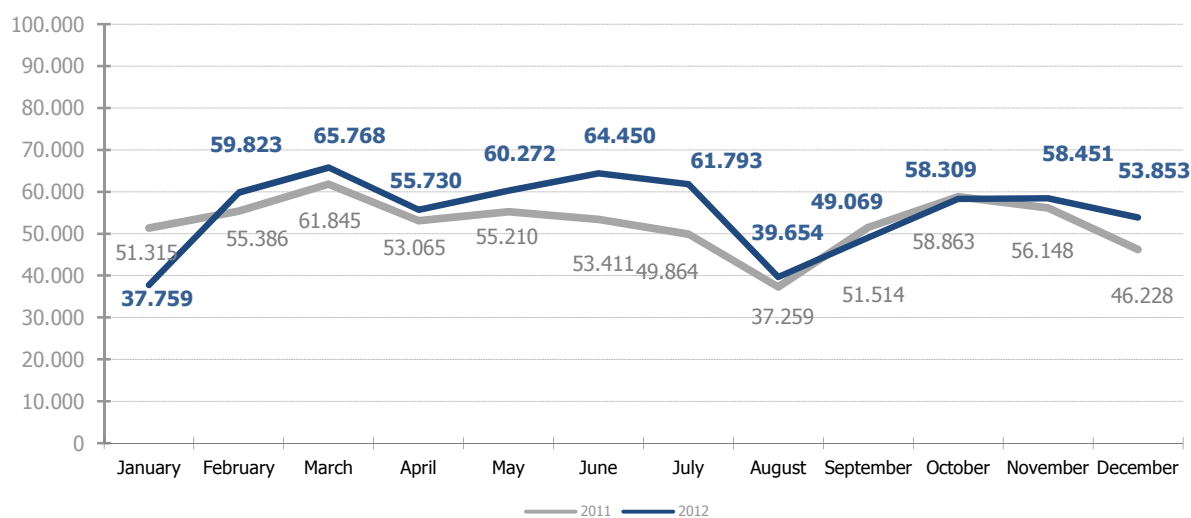


## AUTOMOBILE TRAFFIC

Total automobile traffic (u)	Monthly accumulated			% 12-11 accum. November	% 11-10 accum. October
	2011	2012	%		
<b>Automobile traffic by navigation and operation.</b>	<b>630.108</b>	<b>664.931</b>	<b>5,5%</b>	<b>4,5%</b>	<b>4,7%</b>
<b>Domestic</b>	<b>70.259</b>	<b>70.722</b>	<b>0,7%</b>	<b>-0,1%</b>	<b>1,3%</b>
Loaded	52.891	52.265	-1,2%	-1,8%	-1,6%
Unloaded	17.367	18.457	6,3%	5,2%	12,8%
Transit	1	0	-	-	-
<b>Foreign</b>	<b>559.849</b>	<b>594.209</b>	<b>6,1%</b>	<b>5,1%</b>	<b>5,1%</b>
Loaded	348.367	378.642	8,7%	8,7%	9,8%
Unloaded	138.331	103.501	-25,2%	-26,6%	-23,8%
Transit	73.151	112.066	53,2%	46,9%	35,4%

Monthly automobile traffic (u)	Monthly		Accumulated		%	
	2011	2012	2011	2012	Monthly	Accumulated
January	51.315	37.759	51.315	37.759	-26,4%	-26,4%
February	55.386	59.823	106.701	97.582	8,0%	-8,5%
March	61.845	65.768	168.546	163.350	6,3%	-3,1%
April	53.065	55.730	221.611	219.080	5,0%	-1,1%
May	55.210	60.272	276.821	279.352	9,2%	0,9%
June	53.411	64.450	330.232	343.802	20,7%	4,1%
July	49.864	61.793	380.096	405.595	23,9%	6,7%
August	37.259	39.654	417.355	445.249	6,4%	6,7%
September	51.514	49.069	468.869	494.318	-4,7%	5,4%
October	58.863	58.309	527.732	552.627	-0,9%	4,7%
November	56.148	58.451	583.880	611.078	4,1%	4,7%
December	46.228	53.853	630.108	664.931	16,5%	5,5%

Evolution of monthly automobile traffic.

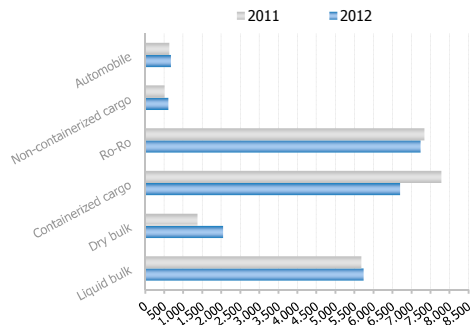


# SHORT SEA SHIPPING (SSS)

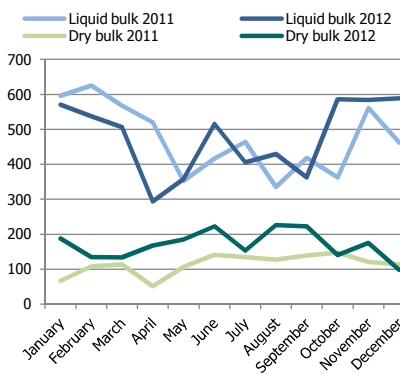
## SSS Goods classification

Goods classification. Tonnes	Monthly accumulated		%	
	2011	2012	% 12-11	% of total port traffic
Liquid bulk	5.680.210	5.736.770	1,0%	55,0%
Dry bulk	1.368.571	2.046.753	49,6%	43,7%
Containerized cargo	7.778.239	6.698.084	-13,9%	38,5%
Ro-Ro	7.335.514	7.237.447	-1,3%	100,0%
Non-containerized cargo	501.841	603.280	20,2%	79,0%
Automobile	633.392	673.247	6,3%	69,6%
<b>Total</b>	<b>23.297.767</b>	<b>22.995.581</b>	<b>-1,3%</b>	<b>55,4%</b>

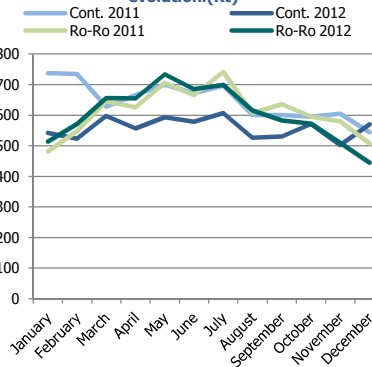
## SSS goods classification. (Kt)



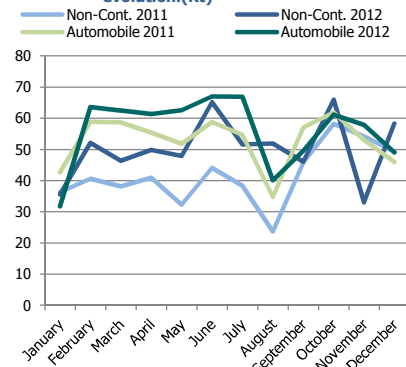
### Bulk cargo evolution.(Kt)



### Containerized & Ro-Ro cargo evolution.(Kt)



### Non-cont. & automobile cargo evolution.(Kt)



SSS General Cargo	Spanish Islands			SSS Remainder			TOTAL		
	2011	2012	% 12-11	2011	2012	% 12-11	2011	2012	% 12-11
<b>Containerized cargo</b>	1.112.454	987.923	-11,2%	6.665.785	5.710.160	-14,3%	<b>7.778.239</b>	<b>6.698.084</b>	<b>-13,9%</b>
O/D	1.061.996	962.494	-9,4%	2.949.648	3.275.392	11,0%	<b>4.011.644</b>	<b>4.237.886</b>	<b>5,6%</b>
Transit	50.458	25.429	-49,6%	3.716.137	2.434.768	-34,5%	<b>3.766.595</b>	<b>2.460.197</b>	<b>-34,7%</b>
<b>Ro-Ro</b>	3.818.195	4.340.014	13,7%	3.517.319	2.897.433	-17,6%	<b>7.335.514</b>	<b>7.237.447</b>	<b>-1,3%</b>
O/D	3.818.168	4.340.014	13,7%	3.517.319	2.897.385	-17,6%	<b>7.335.486</b>	<b>7.237.399</b>	<b>-1,3%</b>
Transit	27	0	-100,0%	0	48	-	<b>27</b>	<b>48</b>	<b>75,8%</b>
<b>Non-containerized</b>	4.753	6.227	31,0%	497.088	597.053	20,1%	<b>501.841</b>	<b>603.280</b>	<b>20,2%</b>
O/D	4.717	6.214	31,7%	490.365	585.658	19,4%	<b>495.082</b>	<b>591.872</b>	<b>19,6%</b>
Transit	35	12	-64,9%	6.723	11.395	69,5%	<b>6.758</b>	<b>11.407</b>	<b>68,8%</b>
<b>Automobile</b>	80.675	91.396	13,3%	552.717	581.851	5,3%	<b>633.392</b>	<b>673.247</b>	<b>6,3%</b>
O/D	80.559	91.312	13,3%	494.987	474.041	-4,2%	<b>575.546</b>	<b>565.353</b>	<b>-1,8%</b>
Transit	116	84	-27,2%	57.730	107.809	86,7%	<b>57.846</b>	<b>107.894</b>	<b>86,5%</b>



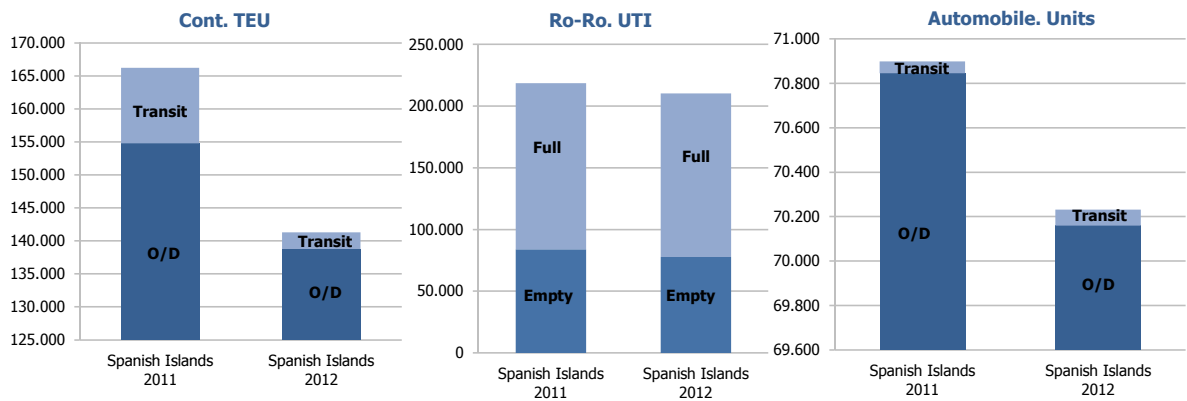
**Short Sea Shipping (SSS):** The movement of cargo and passengers by sea between ports situated in geographical Europe or between those ports and ports situated in non European countries having a coastline on the enclosed seas bordering Europe. (by the European Shortsea Network)

**Motorways of the sea (MoS):** Short Sea Shipping services as an alternative to road and that meet the following criteria: minimum frequency of 3 calls per week and calling at a maximum of 3 different ports.

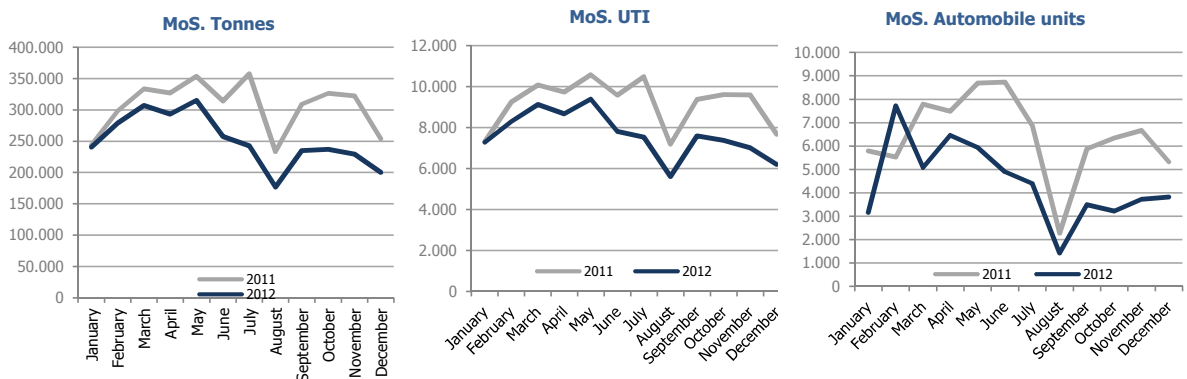
**Non-containerized cargo:** General non-containerized goods other than Ro-Ro and excluding automobiles.

## SHORT SEA SHIPPING (SSS)

SSS General cargo. Units	Spanish Islands			SSS Remainder			TOTAL		
	2011	2012	% 12-11	2011	2012	% 12-11	2011	2012	% 12-11
<b>Containerized cargo. TEU</b>	166.253	141.289	-15,0%	705.911	631.542	-10,5%	<b>872.164</b>	<b>772.831</b>	<b>-11,4%</b>
<b>O/D</b>	154.814	138.781	-10,4%	320.506	369.359	15,2%	<b>475.320</b>	<b>508.139</b>	<b>6,9%</b>
Full	97.244	86.755	-10,8%	194.638	208.402	7,1%	<b>291.882</b>	<b>295.157</b>	<b>1,1%</b>
Empty	57.571	52.026	-9,6%	125.868	160.957	27,9%	<b>183.439</b>	<b>212.983</b>	<b>16,1%</b>
<b>Transit</b>	11.439	2.508	-78,1%	385.405	262.184	-32,0%	<b>396.844</b>	<b>264.692</b>	<b>-33,3%</b>
Full	2.843	2.130	-25,1%	248.993	156.151	-37,3%	<b>251.836</b>	<b>158.281</b>	<b>-37,1%</b>
Empty	8.596	378	-95,6%	136.412	106.033	-22,3%	<b>145.008</b>	<b>106.411</b>	<b>-26,6%</b>
<b>Ro-Ro. UTI</b>	218.561	210.283	-3,8%	111.637	92.594	-17,1%	<b>330.198</b>	<b>302.877</b>	<b>-8,3%</b>
Full	134.489	132.606	-1,4%	104.809	85.460	-18,5%	<b>239.298</b>	<b>218.066</b>	<b>-8,9%</b>
Empty	84.072	77.677	-7,6%	6.828	7.134	4,5%	<b>90.900</b>	<b>84.811</b>	<b>-6,7%</b>
<b>Automobile. Units</b>	70.899	70.231	-0,9%	386.927	418.072	8,0%	<b>457.826</b>	<b>488.303</b>	<b>6,7%</b>
<b>O/D</b>	70.845	70.160	-1,0%	345.916	340.077	-1,7%	<b>416.761</b>	<b>410.237</b>	<b>-1,6%</b>
<b>Transit</b>	54	71	31,5%	41.011	77.995	90,2%	<b>41.065</b>	<b>78.066</b>	<b>90,1%</b>



Motorways of the Sea. (MoS)	EU			Non-EU			TOTAL		
	2011	2012	% 12-11	2011	2012	% 12-11	2011	2012	% 12-11
<b>Tonnes</b>	3.643.855	2.968.495	-18,5%	28.283	44.667	57,9%	<b>3.672.139</b>	<b>3.013.163</b>	<b>-17,9%</b>
Loaded	2.080.804	1.686.284	-19,0%	20.490	20.660	0,8%	<b>2.101.294</b>	<b>1.706.943</b>	<b>-18,8%</b>
Unloaded	1.563.051	1.282.212	-18,0%	7.793	24.008	208,0%	<b>1.570.844</b>	<b>1.306.219</b>	<b>-16,8%</b>
<b>UTI</b>	109.344	90.266	-17,4%	1.099	1.631	48,4%	<b>110.443</b>	<b>91.897</b>	<b>-16,8%</b>
Loaded	58.694	48.413	-17,5%	492	674	37,0%	<b>59.186</b>	<b>49.087</b>	<b>-17,1%</b>
Unloaded	50.650	41.853	-17,4%	607	957	57,7%	<b>51.257</b>	<b>42.810</b>	<b>-16,5%</b>
<b>Automobile units</b>	76.923	52.996	-31,1%	433	333	-23,1%	<b>77.356</b>	<b>53.329</b>	<b>-31,1%</b>
Loaded	75.050	52.239	-30,4%	432	294	-31,9%	<b>75.482</b>	<b>52.533</b>	<b>-30,4%</b>
Unloaded	1.873	757	-59,6%	1	39	3800,0%	<b>1.874</b>	<b>796</b>	<b>-57,5%</b>

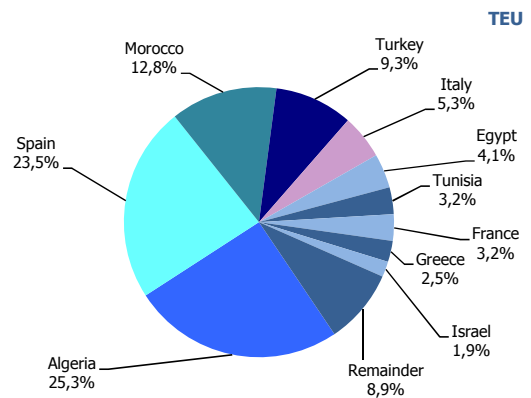


## SHORT SEA SHIPPING (SSS)

### SSS Ranking countries by mode of packaging

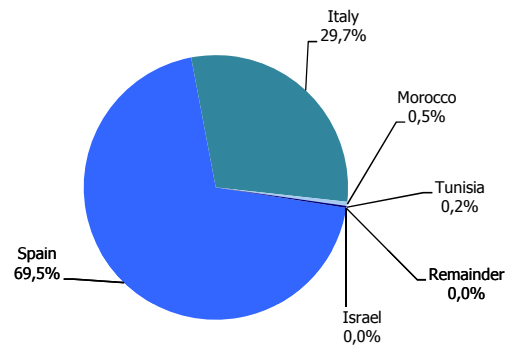
Containerized cargo. TEU	Monthly accumulated			% of total 2012
	2011	2012	% 12-11	
<b>Total</b>	<b>872.164</b>	<b>772.831</b>	<b>-11,4%</b>	<b>100,0%</b>
Algeria	191.929	195.470	1,8%	25,3%
Spain	225.467	181.237	-19,6%	23,5%
Morocco	72.138	98.864	37,0%	12,8%
Turkey	88.072	72.116	-18,1%	9,3%
Italy	74.514	41.042	-44,9%	5,3%
Egypt	33.489	31.820	-5,0%	4,1%
Tunisia	21.049	24.847	18,0%	3,2%
France	52.896	24.607	-53,5%	3,2%
Greece	19.266	19.165	-0,5%	2,5%
Israel	12.878	14.549	13,0%	1,9%
Remainder	80.467	69.116	-14,1%	8,9%

Classification by country.



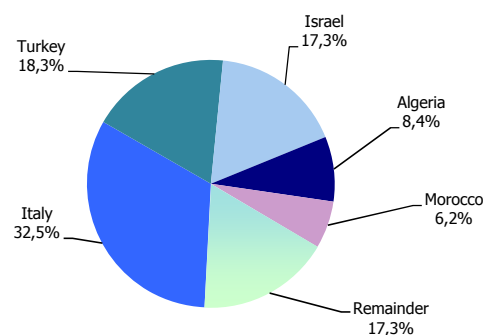
UTI

Ro-Ro. UTI	Monthly accumulated			% of total 2012
	2011	2012	% 12-11	
<b>Total</b>	<b>330.198</b>	<b>302.877</b>	<b>-8,3%</b>	<b>100,0%</b>
Spain	218.561	210.464	-3,7%	69,5%
Italy	109.338	90.084	-17,6%	29,7%
Morocco	1.590	1.606	1,0%	0,5%
Tunisia	703	695	-1,1%	0,2%
Israel	0	9	-	0,0%
Remainder	6	19	216,7%	0,0%



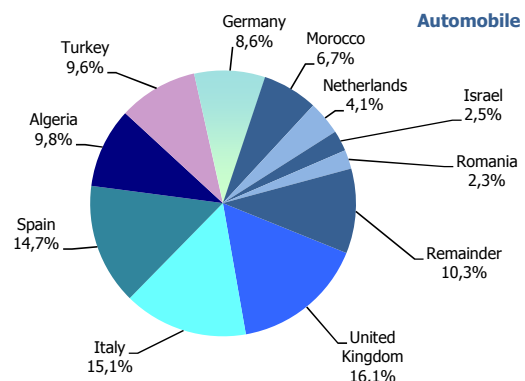
Tonnes

Non-cont. Cargo. Tonnes	Monthly accumulated			% of total 2012
	2011	2012	% 12-11	
<b>Total</b>	<b>501.841</b>	<b>603.280</b>	<b>20,2%</b>	<b>100,0%</b>
Italy	228.702	195.777	-14,4%	32,5%
Turkey	66.198	110.316	66,6%	18,3%
Israel	42.621	104.272	144,6%	17,3%
Algeria	54.362	50.919	-6,3%	8,4%
Morocco	29.615	37.389	26,2%	6,2%
Remainder	80.343	104.608	30,2%	17,3%



Automobile

Automobile. Units	Monthly accumulated			% of total 2012
	2011	2012	% 12-11	
<b>Total</b>	<b>457.826</b>	<b>488.303</b>	<b>6,7%</b>	<b>100,0%</b>
United Kingdom	86.973	78.836	-9,4%	16,1%
Italy	116.400	73.781	-36,6%	15,1%
Spain	74.867	71.857	-4,0%	14,7%
Algeria	17.372	47.693	174,5%	9,8%
Turkey	38.937	47.066	20,9%	9,6%
Germany	4.858	42.223	769,1%	8,6%
Morocco	15.176	32.809	116,2%	6,7%
Netherlands	28.381	20.003	-29,5%	4,1%
Israel	11.338	12.426	9,6%	2,5%
Romania	2.583	11.160	332,1%	2,3%
Remainder	60.941	50.449	-17,2%	10,3%



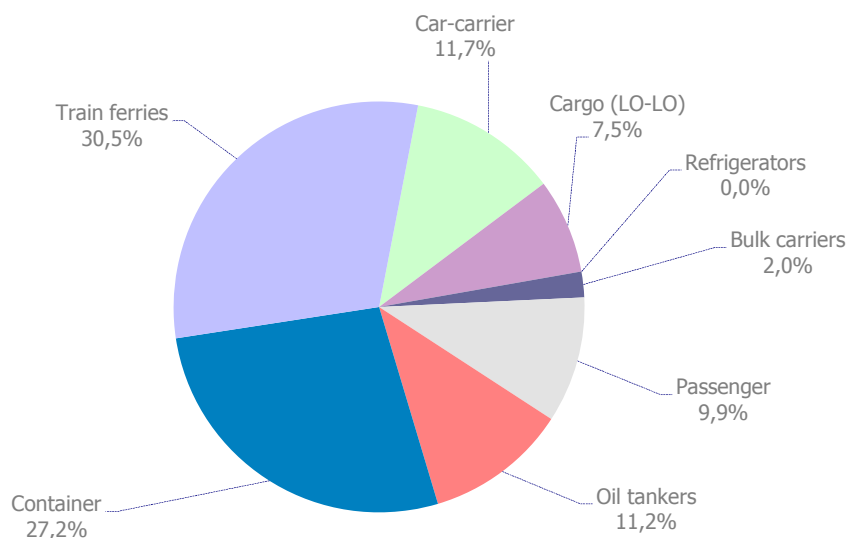
## VESSELS TRAFFIC

Vessel traffic	Monthly accumulated		
	2011	2012	%
Number of calls	7.990	7.757	-2,9%
Tonnage	265.976.546	287.421.030	8,1%
Average tonnes	33.289	37.053	11,3%

Type of vessels	2011		2012		Monthly accumulated %	
	Calls	GT	Calls	GT	Calls	GT
<b>Total</b>	<b>7.990</b>	<b>265.976.546</b>	<b>7.757</b>	<b>287.421.030</b>	<b>-2,92%</b>	<b>8,06%</b>
Car-carrier	677	23.440.754	909	32.657.978	34,3%	39,3%
Cargo (LO-LO)	656	3.375.268	579	2.916.487	-11,7%	-13,6%
Refrigerators	23	435.413	0	0	-100,0%	-100,0%
Bulk carriers	78	1.911.346	157	2.967.631	101,3%	55,3%
Passenger	881	70.915.463	770	81.340.305	-12,6%	14,7%
Oil tankers	838	16.353.871	867	17.068.239	3,5%	4,4%
Container	2.251	75.976.466	2.110	79.257.127	-6,3%	4,3%
Train ferries	2.586	73.567.965	2.365	71.213.263	-8,5%	-3,2%

Type of vessels (Monthly accumulated 2012)	Domestic		Foreign	
	Calls	GT	Calls	GT
<b>Total</b>	<b>2.024</b>	<b>46.711.578</b>	<b>5.733</b>	<b>240.709.452</b>
Car-carrier	35	1.548.524	874	31.109.454
Cargo (LO-LO)	17	118.153	562	2.798.334
Refrigerators	0	0	0	0
Bulk carriers	9	102.522	148	2.865.109
Passenger	36	1.640.986	734	79.699.319
Oil tankers	110	1.630.528	757	15.437.711
Container	261	4.467.831	1.849	74.789.296
Train ferries	1.556	37.203.034	809	34.010.229

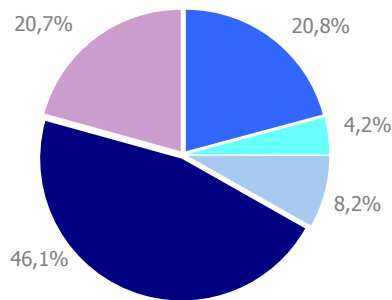
Distribution by type of vessel.



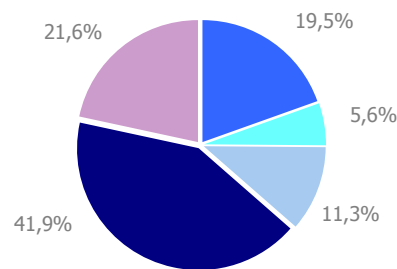
## GOODS TRAFFIC

Mode of packaging and navigation (t)	Monthly accumulated 2011			Monthly accumulated 2012			%
	Domestic	Foreign	Total	Domestic	Foreign	Total	
<b>Hydrocarbons</b>	<b>1.320.057</b>	<b>7.635.112</b>	<b>8.955.170</b>	<b>1.026.802</b>	<b>7.083.654</b>	<b>8.110.456</b>	<b>-9,4%</b>
Incoming	1.294.189	7.379.816	8.674.006	972.901	6.755.721	7.728.622	-10,9%
Outgoing	25.868	255.296	281.164	53.901	327.933	381.834	35,8%
<b>Other liquid bulk</b>	<b>245.716</b>	<b>1.562.615</b>	<b>1.808.332</b>	<b>238.943</b>	<b>2.082.086</b>	<b>2.321.030</b>	<b>28,4%</b>
Incoming	105.943	1.155.816	1.261.760	96.006	1.396.440	1.492.446	18,3%
Outgoing	139.773	406.799	546.572	142.937	685.647	828.584	51,6%
<b>Dry bulk</b>	<b>93.338</b>	<b>3.426.983</b>	<b>3.520.321</b>	<b>212.542</b>	<b>4.473.202</b>	<b>4.685.744</b>	<b>33,1%</b>
Incoming	70.685	2.509.985	2.580.670	201.644	2.493.509	2.695.153	4,4%
Outgoing	22.653	916.999	939.652	10.898	1.979.693	1.990.591	111,8%
<b>Containerized cargo</b>	<b>1.141.528</b>	<b>18.719.095</b>	<b>19.860.623</b>	<b>1.004.709</b>	<b>16.396.374</b>	<b>17.401.082</b>	<b>-12,4%</b>
Incoming	296.152	8.533.686	8.829.838	268.591	6.906.795	7.175.387	-18,7%
Outgoing	845.375	10.185.410	11.030.785	736.117	9.489.578	10.225.695	-7,3%
<b>Non-containerized cargo</b>	<b>3.895.536</b>	<b>5.007.727</b>	<b>8.903.263</b>	<b>4.437.241</b>	<b>4.531.870</b>	<b>8.969.111</b>	<b>0,7%</b>
Incoming	1.365.309	2.073.048	3.438.357	1.516.578	1.765.146	3.281.724	-4,6%
Outgoing	2.530.227	2.934.679	5.464.906	2.920.663	2.766.724	5.687.387	4,1%
<b>Total general cargo</b>	<b>5.037.063</b>	<b>23.726.822</b>	<b>28.763.885</b>	<b>5.441.950</b>	<b>20.928.244</b>	<b>26.370.194</b>	<b>-8,3%</b>
Incoming	1.661.462	10.606.733	12.268.195	1.785.170	8.671.942	10.457.111	-14,8%
Outgoing	3.375.602	13.120.089	16.495.691	3.656.780	12.256.302	15.913.082	-3,5%
<b>Total throughput</b>	<b>6.696.175</b>	<b>36.351.533</b>	<b>43.047.708</b>	<b>6.920.236</b>	<b>34.567.186</b>	<b>41.487.423</b>	<b>-3,6%</b>
Incoming	3.132.279	21.652.351	24.784.630	3.055.720	19.317.611	22.373.331	-9,7%
Outgoing	3.563.896	14.699.182	18.263.078	3.864.516	15.249.575	19.114.091	4,7%
<b>Container traffic (TEU)</b>	<b>197.607</b>	<b>1.837.086</b>	<b>2.034.693</b>	<b>164.565</b>	<b>1.591.864</b>	<b>1.756.429</b>	<b>-13,7%</b>
Incoming	100.083	914.574	1.014.657	85.539	798.446	883.984	-12,9%
Outgoing	97.524	922.512	1.020.036	79.027	793.419	872.445	-14,5%

Distribution by mode of packaging 2011.

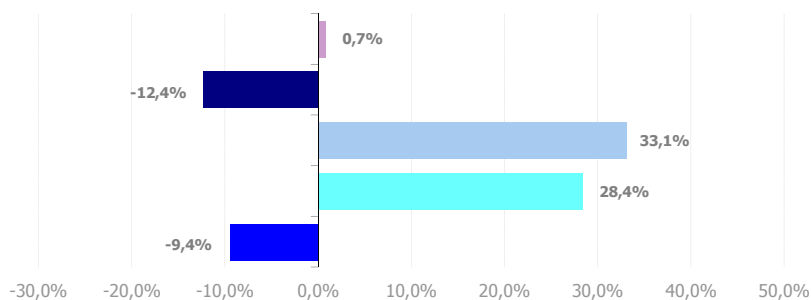


Distribution by mode of packaging 2012.



■ Hydrocarbons ■ Liquid bulk ■ Dry bulk ■ Containerized cargo ■ Non containerized cargo

Annual growth by mode of packaging.





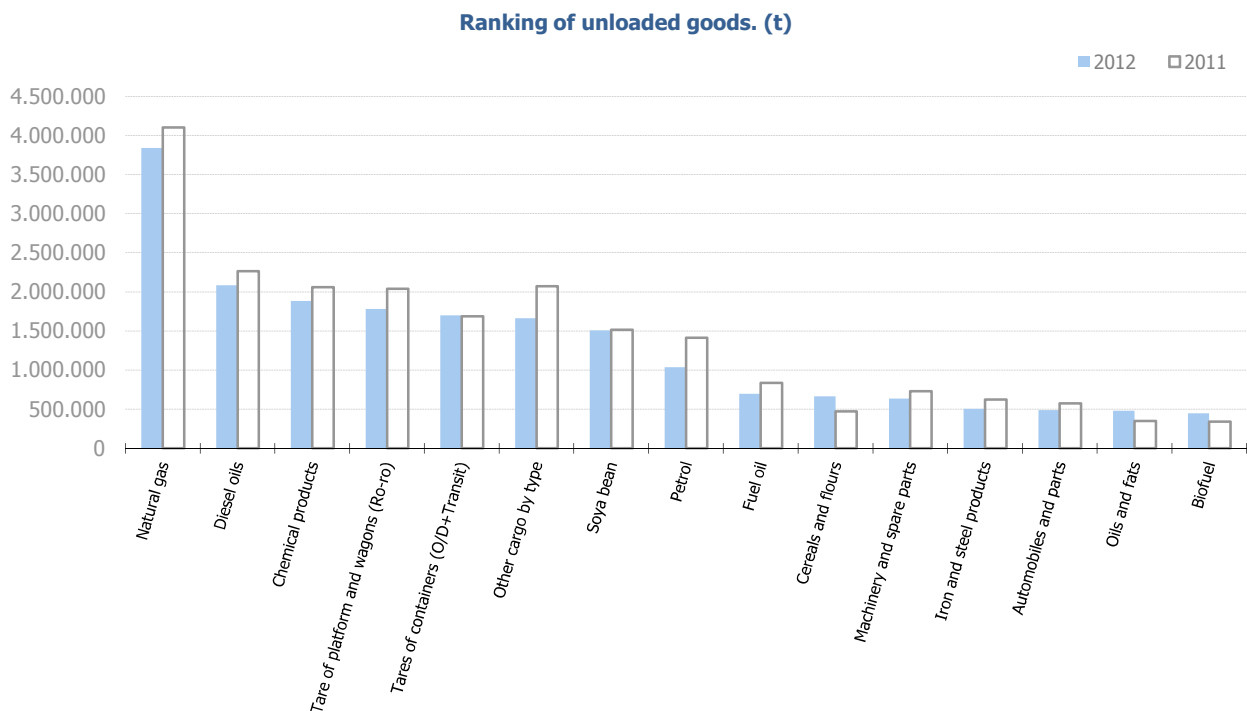
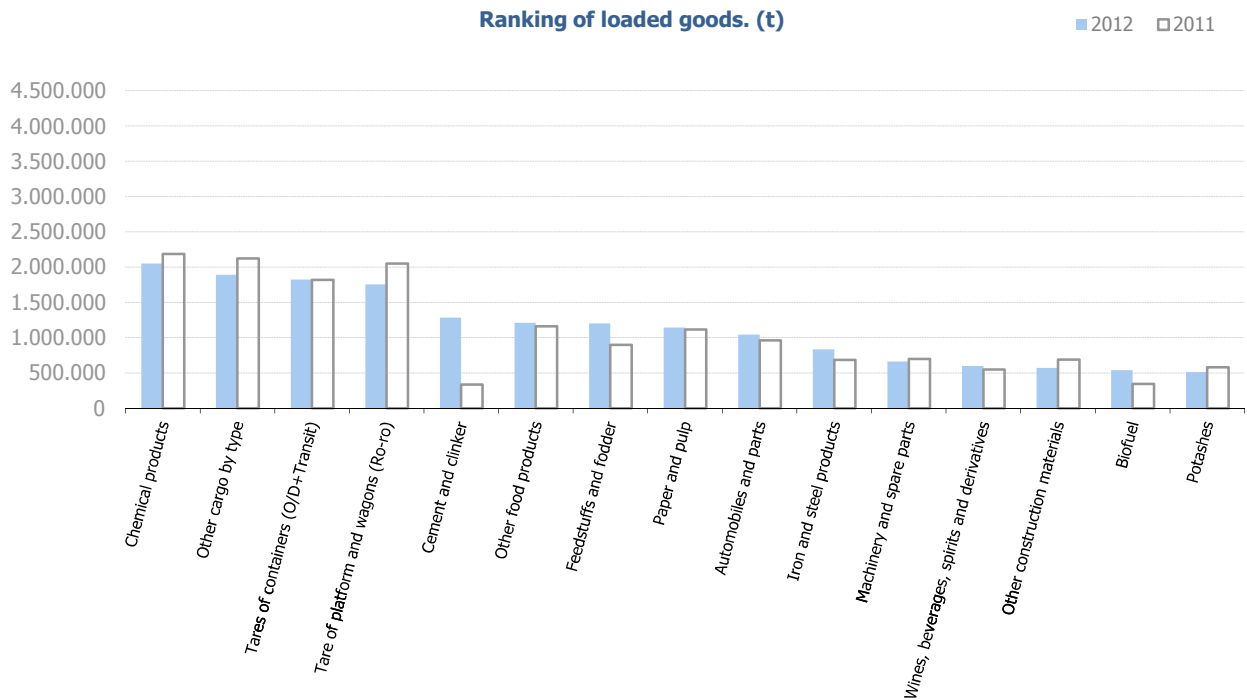
## GOODS TRAFFIC

Goods by classification 4.3.7. (t)	Monthly accumulated		
	2011	2012	%
<b>Total throughput</b>	<b>43.047.708</b>	<b>41.487.423</b>	<b>-3,6%</b>
<b>Energy</b>	<b>9.997.772</b>	<b>9.361.894</b>	<b>-6,4%</b>
Crude oil	165	94	-42,8%
Fuel oil	842.015	705.487	-16,2%
Diesel oils	2.382.936	2.277.952	-4,4%
Petrol	1.574.487	1.208.320	-23,3%
Other petroleum products	212.507	209.315	-1,5%
Petroleum fuel gasses	52.727	57.207	8,5%
Coal	145.391	73.141	-49,7%
Natural gas	4.104.326	3.841.432	-6,4%
Biofuel	683.217	988.945	44,7%
<b>Iron, steel and metallurgical products</b>	<b>2.293.293</b>	<b>2.162.777</b>	<b>-5,7%</b>
Iron ore	19.176	6.743	-64,8%
Other minerals and metallic waste	181.830	180.865	-0,5%
Scrap iron	566.706	427.202	-24,6%
Iron and steel products	1.308.580	1.335.180	2,0%
Other metallurgical products	217.001	212.786	-1,9%
<b>Non-metallic minerals</b>	<b>349.321</b>	<b>337.340</b>	<b>-3,4%</b>
Common salt	119.199	125.460	5,3%
Other non-metallic minerals	230.121	211.880	-7,9%
<b>Fertilizers</b>	<b>729.375</b>	<b>615.547</b>	<b>-15,6%</b>
Phosphates	4.195	1.740	-58,5%
Potashes	582.534	513.201	-11,9%
Natural/artificial fertilizers	142.645	100.606	-29,5%
<b>Chemicals</b>	<b>4.245.631</b>	<b>3.935.120</b>	<b>-7,3%</b>
Chemical products	4.245.631	3.935.120	-7,3%
<b>Construction materials</b>	<b>1.624.654</b>	<b>2.317.304</b>	<b>42,6%</b>
Asphalt	3.762	3.293	-12,5%
Cement and clinker	369.954	1.339.471	262,1%
Other construction materials	1.250.937	974.541	-22,1%
<b>Agriculture, livestock and food</b>	<b>7.285.503</b>	<b>7.762.712</b>	<b>6,6%</b>
Cereals and flours	603.968	736.958	22,0%
Soya bean	1.515.363	1.508.189	-0,5%
Fruit, vegetables and pulses	563.078	414.825	-26,3%
Wines, beverages, spirits and derivatives	666.141	705.060	5,8%
Canned goods	200.222	187.038	-6,6%
Tobacco, coffee and cocoa	453.042	462.153	2,0%
Oils and fats	730.755	922.990	26,3%
Other food products	1.500.035	1.475.334	-1,6%
Frozen fish	113.475	82.946	-26,9%
Feedstuffs and fodder	939.422	1.267.220	34,9%
<b>Other cargo</b>	<b>7.392.366</b>	<b>6.403.954</b>	<b>-13,4%</b>
Timber	206.995	112.838	-45,5%
Paper and pulp	1.560.099	1.438.877	-7,8%
Machinery and spare parts	1.429.477	1.297.815	-9,2%
Other cargo by type	4.195.795	3.554.425	-15,3%
<b>Vehicles and transport parts</b>	<b>9.129.794</b>	<b>8.590.775</b>	<b>-5,9%</b>
Automobiles and parts	1.532.871	1.529.914	-0,2%
Tare of platforms and wagons (ro-ro)	3.505.995	3.523.084	0,5%
Tare of containers	4.090.928	3.537.777	-13,5%

# GOODS TRAFFIC

## Goods ranking by classification 4.3.7. (t)

### Ranking of goods (t)



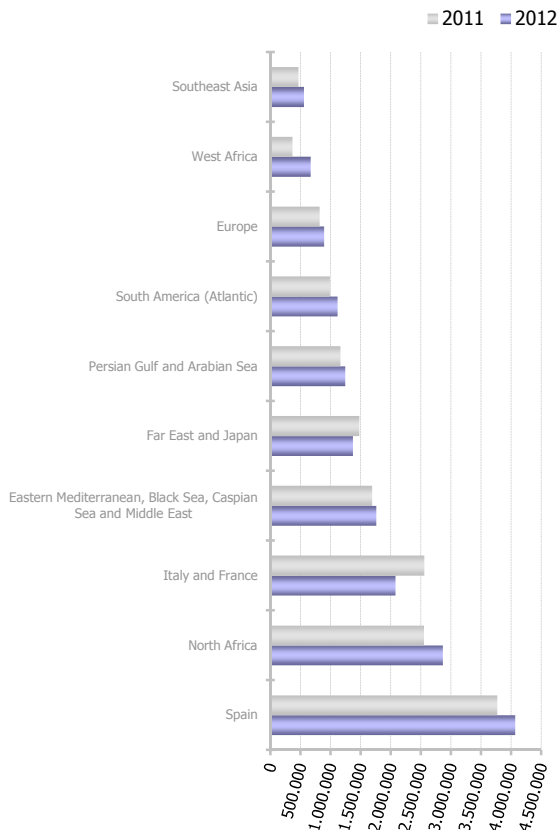
## GOODS TRAFFIC

Goods classification by mode of packaging (t)	Hydrocarbons			Liquid bulk			Dry bulk			Containerized cargo			Non-containerized cargo			Total monthly accumulated		
	2011	2012	%	2011	2012	%	2011	2012	%	2011	2012	%	2011	2012	%	2011	2012	%
<b>Total goods</b>	<b>8.955.170</b>	<b>8.110.456</b>	<b>-9,4%</b>	<b>1.808.332</b>	<b>2.321.030</b>	<b>28,4%</b>	<b>3.520.321</b>	<b>4.685.744</b>	<b>33,1%</b>	<b>19.860.623</b>	<b>17.401.082</b>	<b>-12,4%</b>	<b>8.903.263</b>	<b>8.969.111</b>	<b>0,7%</b>	<b>43.047.708</b>	<b>41.487.423</b>	<b>-3,6%</b>
Crude oil	0	0		0	0		0	0		165	84	-48,9%	0	10	-	165	94	-42,8%
Fuel oil	833.680	696.536	-16,5%	0	0		0	0		8.270	8.601	4,0%	66	351	431,1%	842.015	705.487	-16,2%
Diesel oils	2.382.815	2.277.696	-4,4%	0	0		0	0		103	256	148,2%	18	0	-100,0%	2.382.936	2.277.952	-4,4%
Petrol	1.573.923	1.206.777	-23,3%	0	0		0	0		506	1.543	205,0%	58	0	-100,0%	1.574.487	1.208.320	-23,3%
Asphalt	0	0		0	0		0	0		500	1.154	130,8%	3.263	2.139	-34,4%	3.762	3.293	-12,5%
Other petroleum products	38.714	57.993	49,8%	98.688	108.966	10,4%	0	0		74.049	41.092	-44,5%	1.056	1.263	19,7%	212.507	209.315	-1,5%
Petroleum fuel gasses	25.434	30.121	18,4%	0	0		0	0		7.178	4.231	-41,1%	20.115	22.856	13,6%	52.727	57.207	8,5%
Iron ore	0	0		0	0		0	0		10.543	834	-92,1%	8.633	5.910	-31,5%	19.176	6.743	-64,8%
Other minerals and metallic waste	0	0		0	0		29.652	16.757	-43,5%	150.089	157.725	5,1%	2.089	6.383	205,5%	181.830	180.865	-0,5%
Scrap iron	0	0		0	0		401.029	318.630	-20,5%	138.295	82.862	-40,1%	27.382	25.709	-6,1%	566.706	427.202	-24,6%
Coal	0	0		0	0		119.342	50.139	-58,0%	25.961	22.894	-11,8%	87	107	23,2%	145.391	73.141	-49,7%
Iron and steel products	0	0		0	0		0	0		563.266	553.963	-1,7%	745.314	781.217	4,8%	1.308.580	1.335.180	2,0%
Phosphates	0	0		0	0		0	0		4.097	1.713	-58,2%	98	27	-72,4%	4.195	1.740	-58,5%
Potashes	0	0		0	0		561.135	502.881	-10,4%	21.399	10.202	-52,3%	0	118	-	582.534	513.201	-11,9%
Natural/artificial fertilizer	0	0		37.304	31.342	-16,0%	0	6.516		102.446	59.532	-41,9%	2.896	3.216	11,1%	142.645	100.606	-29,5%
Chemical products	0	0		738.942	682.506	-7,6%	22.962	36.254	57,9%	3.439.599	3.157.365	-8,2%	44.129	58.994	33,7%	4.245.631	3.935.120	-7,3%
Cement and clinker	0	0		0	0		282.829	1.272.090	349,8%	33.188	11.765	-64,5%	53.938	55.615	3,1%	369.954	1.339.471	262,1%
Timber	0	0		0	0		0	0		195.730	95.251	-51,3%	11.265	17.587	56,1%	206.995	112.838	-45,5%
Other construction materials	0	0		0	0		0	0		1.145.840	869.471	-24,1%	105.097	105.070	0,0%	1.250.937	974.541	-22,1%
Cereals and flours	0	0		0	0		398.781	612.375	53,6%	191.197	110.524	-42,2%	13.991	14.059	0,5%	603.968	736.958	22,0%
Soya bean	0	0		0	0		1.510.364	1.500.537	-0,7%	4.853	7.147	47,3%	146	506	246,6%	1.515.363	1.508.189	-0,5%
Fruit, vegetables, pulses	0	0		0	0		10.689	3.447	-67,8%	403.394	271.366	-32,7%	148.996	140.012	-6,0%	563.078	414.825	-26,3%
Wines, beverages, spirits and derivatives	0	0		8.437	7.860	-6,8%	0	0		467.682	449.007	-4,0%	190.022	248.193	30,6%	666.141	705.060	5,8%
Common salt	0	0		0	0		104.094	106.752	2,6%	13.661	16.172	18,4%	1.445	2.536	75,6%	119.199	125.460	5,3%
Paper and pulp	0	0		0	0		0	0		1.361.919	1.278.138	-6,2%	198.180	160.739	-18,9%	1.560.099	1.438.877	-7,8%
Canned goods	0	0		0	0		0	0		192.481	181.488	-5,7%	7.741	5.550	-28,3%	200.222	187.038	-6,6%
Tobacco, coffee and cocoa	0	0		0	0		0	0		452.336	461.426	2,0%	707	727	2,9%	453.042	462.153	2,0%
Oils and fats	0	0		472.110	686.698	45,5%	0	0		159.119	157.243	-1,2%	99.526	79.049	-20,6%	730.755	922.990	26,3%
Other food products	0	0		0	0		0	0		812.725	689.582	-15,2%	687.310	785.752	14,3%	1.500.035	1.475.334	-1,6%
Machinery and spare parts	0	0		0	0		0	0		1.321.967	1.156.154	-12,5%	107.510	141.660	31,8%	1.429.477	1.297.815	-9,2%
Automobiles and parts	0	0		0	0		0	0		426.959	430.289	0,8%	1.105.912	1.099.626	-0,6%	1.532.871	1.529.914	-0,2%
Frozen fish	0	0		0	0		0	0		92.148	63.134	-31,5%	21.328	19.812	-7,1%	113.475	82.946	-26,9%
Other cargo by type	0	0		0	1.002		0	0		2.506.672	1.968.386	-21,5%	1.689.123	1.585.037	-6,2%	4.195.795	3.554.425	-15,3%
Natural gas	4.100.603	3.841.334	-6,3%	0	0		0	0		711	98	-86,2%	3.011	0	-100,0%	4.104.326	3.841.432	-6,4%
Other metallurgical products	0	0		0	0		0	0		208.990	207.466	-0,7%	8.011	5.321	-33,6%	217.001	212.786	-1,9%
Feedstuffs and fodder	0	0		0	0		39.154	192.106	390,6%	876.960	1.049.968	19,7%	23.308	25.145	7,9%	939.422	1.267.220	34,9%
Tares of containers (O/D+Transit)	0	0		0	0		0	0		0	0		3.505.995	3.523.084	0,5%	3.505.995	3.523.084	0,5%
Tare of platform and wagons (Ro-ro)	0	0		0	0		0	0		4.090.928	3.537.777	-13,5%	0	0		4.090.928	3.537.777	-13,5%
Biofuel	0	0		452.851	802.655	77,2%	0	0		166.056	143.142	-13,8%	64.309	43.148	-32,9%	683.217	988.945	44,7%
Other non-metallic minerals	0	0		0	0		40.291	67.258	66,9%	188.641	142.038	-24,7%	1.190	2.583	117,1%	230.121	211.880	-7,9%

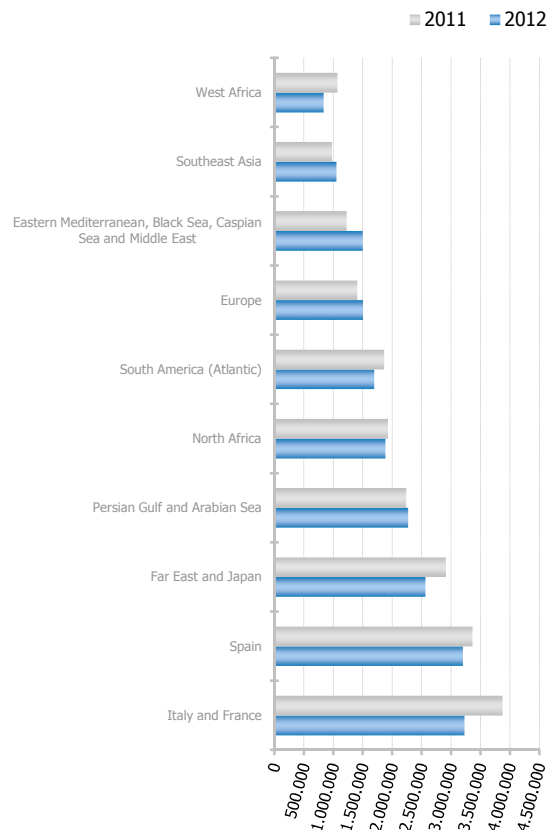
# TRAFFIC BY ORIGIN AND DESTINATION.

Geographical areas (t)	Monthly accumulated		
	2011	2012	%
Spain	7.131.438	7.269.180	1,9%
Italy and France	6.428.334	5.306.655	-17,4%
North Africa	4.477.717	4.749.582	6,1%
Far East and Japan	4.388.020	3.936.519	-10,3%
Persian Gulf and Arabian Sea	3.396.333	3.515.124	3,5%
Eastern Mediterranean, Black Sea, Caspian Sea and Middle East	2.916.350	3.253.945	11,6%
South America (Atlantic)	2.844.996	2.809.878	-1,2%
Europe	2.221.667	2.393.063	7,7%
Southeast Asia	1.439.072	1.607.693	11,7%
West Africa	1.433.289	1.502.321	4,8%
Gulf of Mexico (Mexico and USA)	1.760.128	1.072.138	-39,1%
Pakistan, India, Sri Lanka and Bangladesh	1.147.629	845.202	-26,4%
Central America and Caribbean	615.446	762.458	23,9%
Red Sea	751.612	627.238	-16,5%
North America (Atlantic)	571.724	488.977	-14,5%
South America (Pacific)	438.797	386.883	-11,8%
South-eastern Africa and Indian Ocean	370.888	310.698	-16,2%
Canada (Atlantic) and Great Lakes	357.148	259.580	-27,3%
Australia, New Zealand and Pacific Islands	242.433	231.535	-4,5%
Unknown area (Tare of empty containers)	53.114	94.750	78,4%
North America (Pacific)	61.573	64.001	3,9%

Main areas of destination. (t)



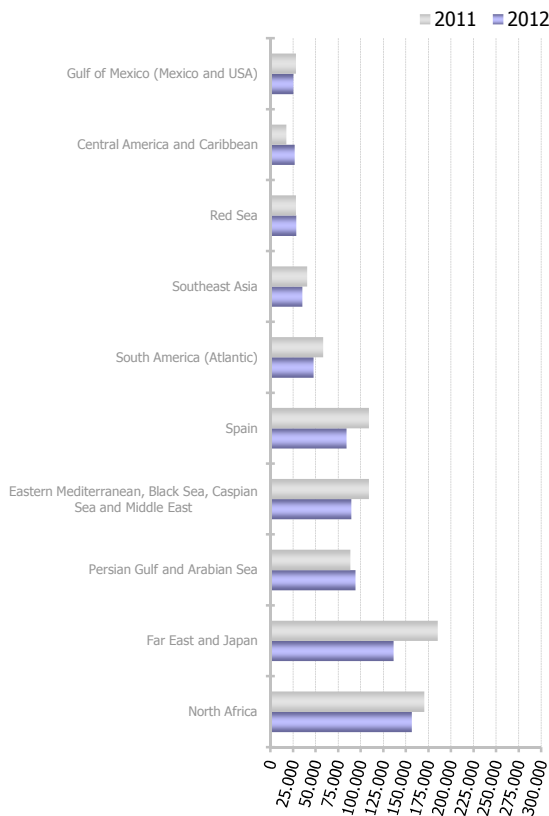
Main areas of origin. (t)



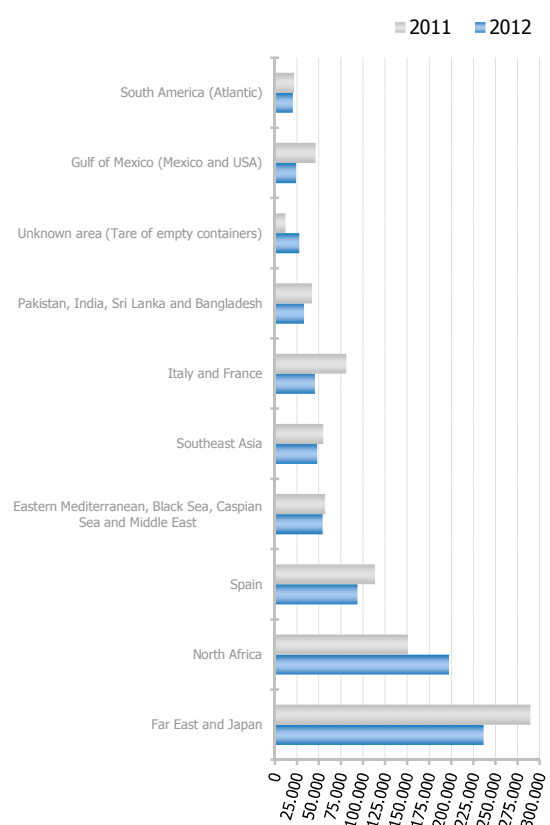
# TRAFFIC BY ORIGIN AND DESTINATION.

Geographical areas (TEU)	Monthly accumulated		
	2011	2012	%
Far East and Japan	474.557	372.655	-21,5%
North Africa	321.172	353.484	10,1%
Spain	222.503	177.965	-20,0%
Eastern Mediterranean, Black Sea, Caspian Sea and Middle East	165.951	143.516	-13,5%
Persian Gulf and Arabian Sea	102.440	110.383	7,8%
Southeast Asia	95.228	83.387	-12,4%
South America (Atlantic)	79.834	68.015	-14,8%
Italy and France	121.605	63.432	-47,8%
Gulf of Mexico (Mexico and USA)	73.940	49.091	-33,6%
Pakistan, India, Sri Lanka and Bangladesh	73.842	48.820	-33,9%
Unknown area (Tare of empty containers)	26.036	45.660	75,4%
Central America and Caribbean	53.616	44.442	-17,1%
Red Sea	41.018	39.486	-3,7%
North America (Atlantic)	39.994	35.677	-10,8%
Europe	36.469	28.910	-20,7%
West Africa	29.753	28.049	-5,7%
South America (Pacific)	21.406	23.877	11,5%
South-eastern Africa and Indian Ocean	24.715	20.947	-15,2%
Australia, New Zealand and Pacific Islands	10.619	8.320	-21,7%
North America (Pacific)	5.210	5.534	6,2%
Canada (Atlantic) and Great Lakes	14.790	4.784	-67,7%

Main areas of destination. (TEU)



Main areas of origin. (TEU)



## TRAFFIC BY ORIGIN AND DESTINATION

### Countries by mode of packaging. Load (Transit not included)

Liquid bulk			Dry bulk		
	Tonnes	% a/packaging		Tonnes	% a/packaging
Spain	193.928	27,8%	Brazil	506.824	25,5%
Portugal	76.740	11,0%	Algeria	310.605	15,6%
Algeria	72.139	10,4%	Netherlands	164.103	8,2%
Martinique	59.244	8,5%	Puerto Rico	149.866	7,5%
France	55.029	7,9%	Turkey	125.090	6,3%
United States	40.925	5,9%	Malaysia	118.782	6,0%
Italy	39.044	5,6%	Guinea	111.671	5,6%
United Kingdom	31.629	4,5%	Togo	87.983	4,4%
Republic of South Africa	25.010	3,6%	France	58.545	2,9%
Romania	21.850	3,1%	United Kingdom	43.984	2,2%
Israel	13.905	2,0%	Ireland	42.241	2,1%
Belgium	13.729	2,0%	Côte d'Ivoire	40.788	2,0%
Libya	9.800	1,4%	Sierra Leone	38.498	1,9%
Netherlands	8.153	1,2%	Portugal	32.604	1,6%
Senegal	8.100	1,2%	Nigeria	31.700	1,6%
Remainder	27.213	3,9%	Remainder	127.307	6,4%
<b>TOTAL</b>	<b>696.437</b>	<b>100%</b>	<b>TOTAL</b>	<b>1.990.591</b>	<b>100%</b>

Containerized cargo			Non-containerized cargo		
	TEU	% a/packaging		Tonnes	% a/packaging
Spain	79.384	11,3%	Spain	2.922.844	52,2%
China	77.436	11,0%	Italy	1.688.581	30,2%
United Arab Emirates	74.345	10,6%	Turkey	149.410	2,7%
Turkey	38.587	5,5%	Israel	116.239	2,1%
Algeria	35.791	5,1%	Algeria	89.459	1,6%
United States	25.251	3,6%	United Kingdom	84.638	1,5%
Saudi Arabia	25.026	3,6%	Germany	62.416	1,1%
Morocco	20.906	3,0%	United Arab Emirates	57.651	1,0%
Brazil	19.692	2,8%	Morocco	52.531	0,9%
Singapore	18.265	2,6%	Australia	46.601	0,8%
Mexico	17.623	2,5%	Mexico	42.319	0,8%
Hong Kong	16.901	2,4%	Egypt	37.462	0,7%
Japan	12.496	1,8%	Netherlands	31.443	0,6%
South Korea	11.736	1,7%	Tunisia	23.681	0,4%
Republic of South Africa	11.413	1,6%	Saudi Arabia	22.240	0,4%
Remainder	218.459	31,1%	Remainder	171.244	3,1%
<b>TOTAL</b>	<b>703.309</b>	<b>100%</b>	<b>TOTAL</b>	<b>5.598.759</b>	<b>100%</b>

## TRAFFIC BY ORIGIN AND DESTINATION

### Countries by mode of packaging. Unload (Transit not included)

Liquid bulk			Dry bulk		
	Tonnes	% a/packaging		Tonnes	% a/packaging
Qatar	1.585.601	17,8%	Brazil	1.079.386	40,0%
Spain	1.065.997	12,0%	Ukraine	278.687	10,3%
Italy	992.359	11,2%	Spain	201.644	7,5%
Algeria	922.692	10,4%	Canada	191.430	7,1%
Nigeria	666.399	7,5%	Romania	147.620	5,5%
Norway	426.617	4,8%	Belgium	99.500	3,7%
United States	339.473	3,8%	Uruguay	87.107	3,2%
Indonesia	317.183	3,6%	United States	86.000	3,2%
Russian Federation	263.271	3,0%	Russian Federation	85.010	3,2%
Kuwait	258.605	2,9%	Turkey	62.478	2,3%
France	251.248	2,8%	United Kingdom	61.673	2,3%
Egypt	224.603	2,5%	Argentina	58.679	2,2%
India	221.559	2,5%	Denmark	35.362	1,3%
Saudi Arabia	150.698	1,7%	Italy	32.776	1,2%
Trinidad and Tobago	113.374	1,3%	Bulgaria	31.882	1,2%
Remainder	1.090.239	12,3%	Remainder	155.918	5,8%
<b>TOTAL</b>	<b>8.889.918</b>	<b>100%</b>	<b>TOTAL</b>	<b>2.695.153</b>	<b>100%</b>

Containerized cargo			Non-containerized cargo		
	TEU	% a/packaging		Tonnes	% a/packaging
China	155.458	25,4%	Spain	1.517.773	47,7%
Spain	76.468	12,5%	Italy	1.448.986	45,5%
Algeria	48.703	7,9%	South Korea	59.212	1,9%
Morocco	31.210	5,1%	Morocco	33.375	1,0%
Turkey	18.929	3,1%	Japan	29.418	0,9%
United States	18.234	3,0%	China	19.617	0,6%
India	17.047	2,8%	India	15.622	0,5%
Vietnam	16.992	2,8%	United Kingdom	14.364	0,5%
Saudi Arabia	15.690	2,6%	France	9.625	0,3%
Egypt	15.080	2,5%	Tunisia	8.915	0,3%
Hong Kong	12.685	2,1%	Turkey	7.446	0,2%
Italy	11.568	1,9%	Netherlands	4.287	0,1%
Tunisia	11.238	1,8%	Norway	3.200	0,1%
Japan	9.367	1,5%	Poland	2.799	0,1%
Brazil	9.249	1,5%	Russian Federation	2.045	0,1%
Remainder	144.755	23,6%	Remainder	7.950	0,2%
<b>TOTAL</b>	<b>612.671</b>	<b>100%</b>	<b>TOTAL</b>	<b>3.184.632</b>	<b>100%</b>

## TRAFFIC BY ORIGIN AND DESTINATION

### Total countries by mode of packaging. (Transit not included)

Liquid bulk			Dry bulk		
	Tonnes	% a/packaging		Tonnes	% a/packaging
Qatar	1.585.601	16,5%	Brazil	1.586.210	33,9%
Spain	1.259.925	13,1%	Algeria	310.605	6,6%
Italy	1.031.403	10,8%	Ukraine	278.687	5,9%
Algeria	994.832	10,4%	Spain	212.542	4,5%
Nigeria	668.999	7,0%	Canada	191.430	4,1%
Norway	426.617	4,5%	Turkey	187.567	4,0%
United States	380.398	4,0%	Netherlands	164.103	3,5%
Indonesia	317.183	3,3%	Puerto Rico	149.866	3,2%
France	306.277	3,2%	Romania	147.620	3,2%
Russian Federation	263.271	2,7%	Malaysia	118.782	2,5%
Kuwait	258.605	2,7%	Guinea	111.671	2,4%
Egypt	226.604	2,4%	United States	108.000	2,3%
India	221.559	2,3%	United Kingdom	105.657	2,3%
Saudi Arabia	153.568	1,6%	Belgium	99.500	2,1%
Netherlands	118.271	1,2%	Togo	87.983	1,9%
Remainder	1.373.243	14,3%	Remainder	825.521	17,6%
<b>TOTAL</b>	<b>9.586.355</b>	<b>100%</b>	<b>TOTAL</b>	<b>4.685.744</b>	<b>100%</b>

Containerized cargo			Non-containerized cargo		
	TEU	% a/packaging		Tonnes	% a/packaging
China	232.894	17,7%	Spain	4.440.617	50,6%
Spain	155.851	11,8%	Italy	3.137.567	35,7%
Algeria	84.494	6,4%	Turkey	156.855	1,8%
United Arab Emirates	77.465	5,9%	Israel	116.316	1,3%
Turkey	57.516	4,4%	United Kingdom	99.002	1,1%
Morocco	52.116	4,0%	Algeria	89.498	1,0%
United States	43.484	3,3%	Morocco	85.905	1,0%
Saudi Arabia	40.716	3,1%	Germany	62.526	0,7%
Hong Kong	29.586	2,2%	South Korea	61.659	0,7%
Brazil	28.941	2,2%	United Arab Emirates	57.673	0,7%
India	27.129	2,1%	Australia	46.601	0,5%
Egypt	26.441	2,0%	Mexico	42.366	0,5%
Mexico	24.461	1,9%	Egypt	37.462	0,4%
Tunisia	22.232	1,7%	Netherlands	35.729	0,4%
Japan	21.863	1,7%	Tunisia	32.596	0,4%
Remainder	390.793	29,7%	Remainder	281.017	3,2%
<b>TOTAL</b>	<b>1.315.979</b>	<b>100%</b>	<b>TOTAL</b>	<b>8.783.391</b>	<b>100%</b>