

Port of Barcelona traffic statistics

Accumulated data December 2011

Statistics Service

Index

Traffic indicators

Total traffic	3
Breakdown of traffic. I	4
Breakdown of traffic. II	5
Monthly evolution of traffic	6

Container traffic

TEU evolution	7
Container traffic (TEU)	8

Passenger traffic

Passenger traffic	9
-------------------	---

Automobile traffic

Automobile traffic	10
--------------------	----

Intermodal transport

UTI (Intermodal transport unit)	11
---------------------------------	----

Vessel traffic

Vessel traffic	12
----------------	----

Goods traffic

Mode of packaging and navigation	13
4.3.7 goods classification	14
Goods ranking	15
Goods classification by mode of packaging	16

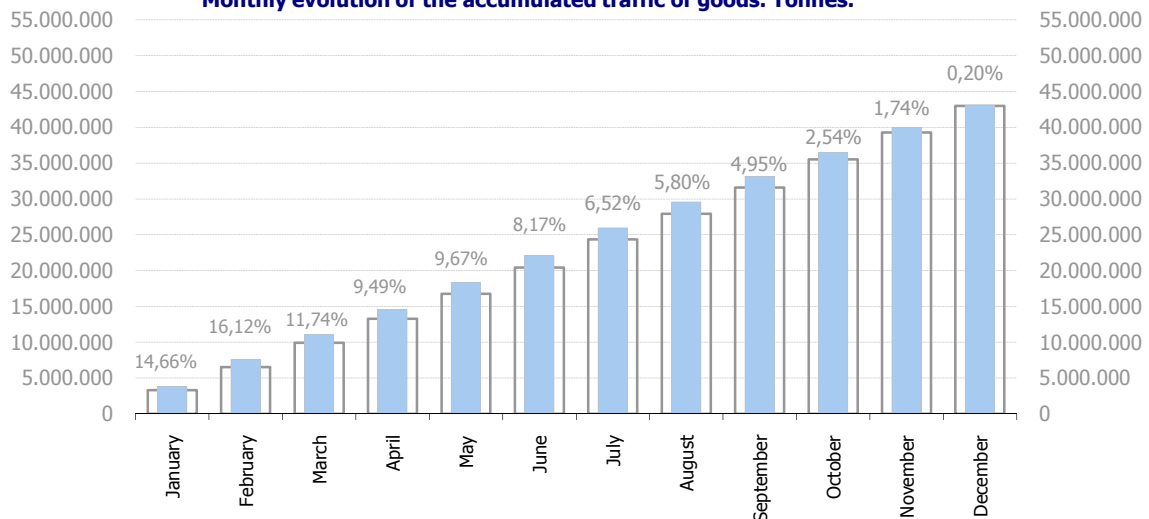
Traffic by origin and destination

Geographical areas (Tonnes)	17
Geographical areas (TEU)	18
Countries by mode of packaging. Load	19
Countries by mode of packaging. Unloading	20
Total countries by mode of packaging	21

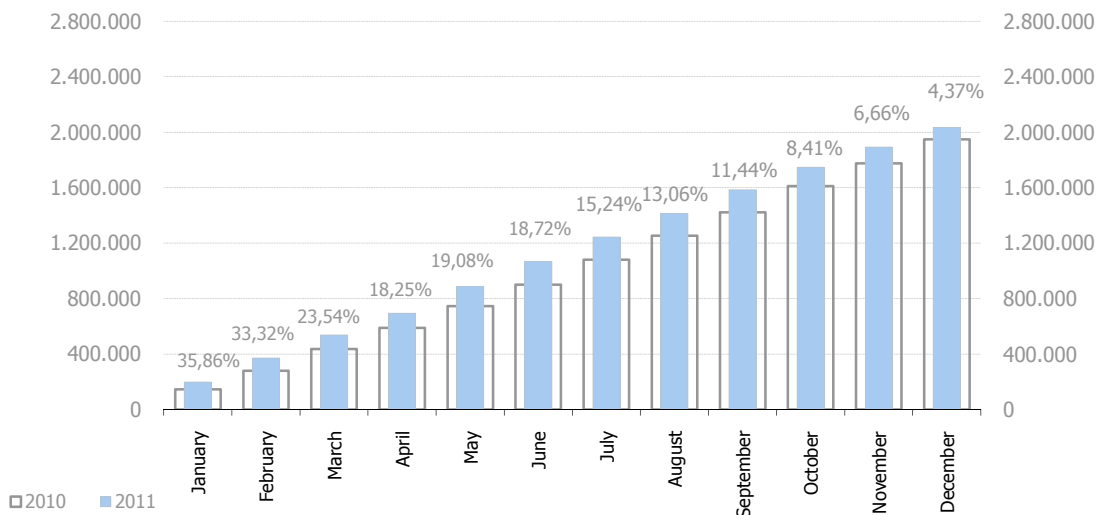
TRAFFIC INDICATORS

Total traffic	Accumulated data December 2011			% 11-10 accum. November	% 11-10 accum. October	Total traffic 2010
	2010	2011	%			
Total throughput (t)	42.978.278	43.065.458	0,20%	1,69%	2,55%	42.978.278
Food supplying	1.108.210	1.222.830	10,34%	18,80%	15,58%	1.108.210
Fishing	2.723	3.036	11,50%	-24,21%	-20,45%	2.723
TOTAL TRAFFIC (t)	44.089.211	44.291.325	0,46%	2,13%	2,89%	44.089.211
TEU	1.948.422	2.033.549	4,37%	6,56%	8,41%	1.948.422
Vessels (units)	8.186	8.007	-2,19%	-2,10%	-2,32%	8.186
Passengers (units)	3.457.939	3.827.062	10,67%	11,56%	11,78%	3.457.939
Automobiles (units)	553.650	630.102	13,81%	15,76%	16,96%	553.650

Monthly evolution of the accumulated traffic of goods. Tonnes.



Monthly evolution of the accumulated traffic of goods. TEU.



TRAFFIC INDICATORS

Breakdown of traffic. I	Accumulated data December 2011			% 11-10 accum. November	% 11-10 accum. October	% of total accum. 2011
	2010	2011	%			
Goods indicators by type of packaging (t)	42.978.278	43.065.458	0,20%	1,69%	2,55%	100,00%
Liquid bulk	11.554.721	10.761.502	-6,86%	-6,11%	-5,64%	24,99%
Hydrocarbons	9.755.534	8.955.234	-8,20%	-7,16%	-7,54%	20,79%
Natural gas	5.089.424	4.100.668	-19,43%	-18,03%	-15,63%	9,52%
Diesel oils	2.727.668	2.382.815	-12,64%	-13,40%	-10,54%	5,53%
Petrol	1.184.043	1.542.034	30,23%	37,29%	17,86%	3,58%
Fuel oil	675.244	865.569	28,19%	24,04%	19,09%	2,01%
Other petroleum products	35.384	35.961	1,63%	-0,13%	-14,41%	0,08%
Remainder	43.771	28.188	-35,60%	-37,09%	-36,15%	0,07%
Other liquid bulk	1.799.188	1.806.268	0,39%	-0,38%	4,60%	4,19%
Chemical products	1.031.111	1.184.820	14,91%	14,25%	21,93%	2,75%
Oils and fats	590.251	472.488	-19,95%	-20,44%	-16,71%	1,10%
Petroleum fuel gasses	112.954	81.824	-27,56%	-24,69%	-24,49%	0,19%
Natural/artificial fertilizer	9.116	37.304	309,19%	252,05%	252,05%	0,09%
Other petroleum products	24.384	16.864	-30,84%	-30,18%	-41,53%	0,04%
Remainder	31.371	12.968	-58,66%	-59,02%	-62,43%	0,03%
Dry bulk	3.541.926	3.544.297	0,07%	2,60%	1,29%	8,23%
Special installation	2.839.719	2.826.688	-0,46%	2,63%	1,09%	6,56%
Soya bean	1.676.297	1.534.101	-8,48%	-4,83%	-7,64%	3,56%
Potashes	322.779	561.135	73,85%	84,82%	79,13%	1,30%
Cereals and flours	345.086	398.781	15,56%	14,66%	13,53%	0,93%
Cement and clinker	404.109	282.829	-30,01%	-25,40%	-20,24%	0,66%
Feedstuffs and fodder	85.553	39.154	-54,23%	-60,31%	-58,72%	0,09%
Remainder	5.896	10.689	81,28%	81,28%	-	0,02%
Without special installation	702.207	717.609	2,19%	2,47%	2,09%	1,67%
Scrap metal	329.441	401.268	21,80%	19,23%	18,47%	0,93%
Coal	120.368	119.342	-0,85%	-0,85%	-0,85%	0,28%
Common salt	114.375	104.094	-8,99%	-6,69%	-2,26%	0,24%
Other minerals	75.526	69.942	-7,39%	0,25%	-9,71%	0,16%
Chemical products	58.498	22.962	-60,75%	-63,14%	-59,91%	0,05%
Remainder	4.000	0	-	-	-	0,00%
General cargo	27.881.630	28.759.659	3,15%	4,82%	6,05%	66,78%
Containerized	19.204.557	19.856.775	3,40%	5,91%	7,70%	46,11%
Tares of containers (O/D+Transit)	3.913.446	4.089.666	4,50%	6,67%	8,49%	9,50%
Chemical products	3.418.125	3.595.895	5,20%	7,29%	8,92%	8,35%
Other cargo by type	2.875.726	2.475.180	-13,93%	-11,53%	-10,83%	5,75%
Paper and pulp	1.308.971	1.362.996	4,13%	6,79%	8,18%	3,16%
Machinery and spare parts	1.298.112	1.330.399	2,49%	3,88%	4,58%	3,09%
Remainder	6.390.176	7.002.639	9,58%	12,81%	15,65%	16,26%
Non-containerized	8.677.073	8.902.884	2,60%	2,47%	2,50%	20,67%
Tare of platform and wagons (Ro-ro)	3.651.021	3.557.143	-2,57%	-2,09%	-1,51%	8,26%
Other cargo by type	1.840.463	1.485.571	-19,28%	-19,32%	-19,09%	3,45%
Automobiles and parts	816.795	1.030.387	26,15%	29,42%	31,72%	2,39%
Iron and steel products	633.222	745.344	17,71%	10,48%	6,15%	1,73%
Other food products	564.662	708.407	25,46%	26,61%	26,93%	1,64%
Remainder	1.170.911	1.376.031	17,52%	16,90%	16,27%	3,20%

TRAFFIC INDICATORS

Breakdown of traffic. II	Monthly accumulated			Last 12 months	Total traffic 2010	% 12 months-2010
	2010	2011	%			

Goods indicators by navigation and operation.

Navigation (t)	42.978.278	43.065.458	0,20%	43.065.458	42.978.278	0,20%
Domestic	6.206.105	6.694.884	7,88%	6.694.884	6.206.105	7,88%
Foreign	36.772.172	36.370.575	-1,09%	36.370.575	36.772.172	-1,09%
Operation (t)	42.978.278	43.065.458	0,20%	43.065.458	42.978.278	0,20%
Loaded	13.276.203	14.664.323	10,46%	14.664.323	13.276.203	10,46%
Unloaded	22.185.421	21.178.588	-4,54%	21.178.588	22.185.421	-4,54%
Transit	7.516.654	7.222.547	-3,91%	7.222.547	7.516.654	-3,91%

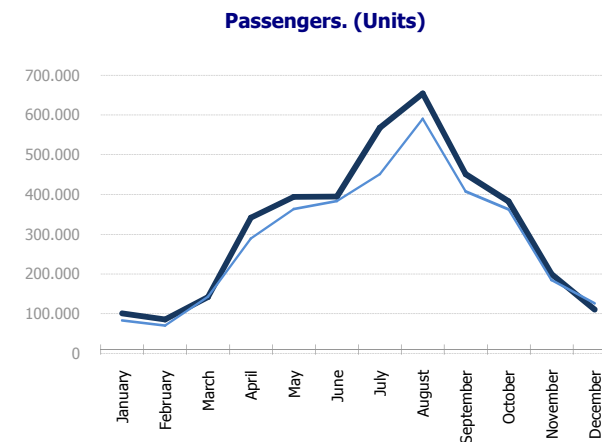
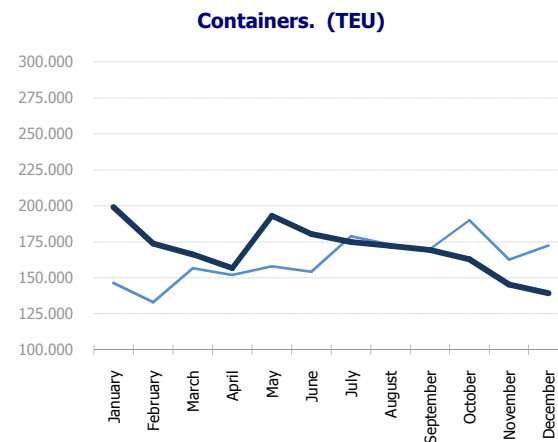
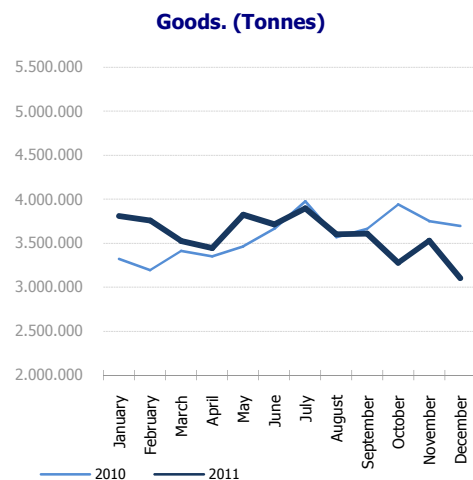
Goods indicators by main units.

Containers (TEU)	1.948.422	2.033.549	4,37%	2.033.549	1.948.422	4,37%
TEU O/D	1.308.283	1.367.031	4,49%	1.367.031	1.308.283	4,49%
TEU transit	640.139	666.518	4,12%	666.518	640.139	4,12%
Containerized tonnes	19.204.557	19.856.775	3,40%	19.856.775	19.204.557	3,40%
Level of containerization	68,88%	69,04%	0,24%	69,04%	68,88%	0,24%
Automobiles (u)	553.650	630.102	13,81%	630.102	553.650	13,81%
Loaded	326.426	401.223	22,91%	401.223	326.426	22,91%
Unloaded	140.174	152.087	8,50%	152.087	140.174	8,50%
Transit	87.050	76.792	-11,78%	76.792	87.050	-11,78%
Vessels (u)	8.186	8.007	-2,19%	8.007	8.186	-2,19%
Number of calls	8.186	8.007	-2,19%	8.007	8.186	-2,19%
GT	256.219.081	265.832.727	3,75%	265.832.727	256.219.081	3,75%
Average tonnes by vessel	5.250	5.378	2,44%	5.378	5.250	2,44%
Passengers (u)	3.457.939	3.827.062	10,67%	3.827.062	3.457.939	10,67%
Regular line	1.107.675	1.169.818	5,61%	1.169.818	1.107.675	5,61%
Pleasure cruises	2.350.264	2.657.244	13,06%	2.657.244	2.350.264	13,06%

TRAFFIC INDICATORS

Monthly evolution of traffic	Tonnes				TEU				Passengers			
	2010	2011	Monthly %	Accumulated %	2010	2011	Monthly %	Accumulated %	2010	2011	Monthly %	Accumulated %
January	3.320.837	3.807.668	14,66%	14,66%	146.588	199.155	35,86%	35,86%	83.684	100.719	20,36%	20,36%
February	3.191.063	3.754.262	17,65%	16,12%	133.231	173.903	30,53%	33,32%	70.500	85.663	21,51%	20,88%
March	3.410.222	3.524.901	3,36%	11,74%	156.757	166.279	6,07%	23,54%	143.143	142.203	-0,66%	10,51%
April	3.348.310	3.442.444	2,81%	9,49%	152.085	156.760	3,07%	18,25%	289.458	341.470	17,97%	14,19%
May	3.460.704	3.819.968	10,38%	9,67%	158.010	193.069	22,19%	19,08%	363.763	394.041	8,32%	11,95%
June	3.662.399	3.711.398	1,34%	8,17%	154.232	180.354	16,94%	18,72%	383.724	395.376	3,04%	9,38%
July	3.973.595	3.895.736	-1,96%	6,52%	179.020	174.968	-2,26%	15,24%	451.662	567.946	25,75%	13,52%
August	3.567.085	3.598.058	0,87%	5,80%	173.187	172.220	-0,56%	13,06%	590.261	654.362	10,86%	12,86%
September	3.663.083	3.606.396	-1,55%	4,95%	170.043	169.288	-0,44%	11,44%	408.091	451.731	10,69%	12,54%
October	3.937.467	3.276.024	-16,80%	2,54%	190.012	162.840	-14,30%	8,41%	362.936	382.539	5,40%	11,72%
November	3.748.366	3.528.377	-5,87%	1,74%	162.777	145.305	-10,73%	6,66%	184.753	200.369	8,45%	11,54%
December	3.695.146	3.100.226	-16,10%	0,20%	172.483	139.411	-19,17%	4,37%	125.964	110.643	-12,16%	10,67%
Total	42.978.278	43.065.458			1.948.422	2.033.549			3.457.939	3.827.062		

Monthly evolution of traffic.



TRAFFIC INDICATORS

TEU evolution

Full-unloaded foreign	Full TEU		%		Full-loaded foreign	Full TEU		%		Full - Transit	Full TEU		%	
	2010	2011	Monthly	Accumulated		2010	2011	Monthly	Accumulated		2010	2011	Monthly	Accumulated
January	37.582	39.323	4,63%	4,63%	January	26.383	33.840	28,26%	28,26%	January	38.597	72.367	87,50%	87,50%
February	29.511	35.512	20,33%	11,54%	February	32.541	39.424	21,15%	24,34%	February	33.009	53.217	61,22%	75,38%
March	35.418	36.879	4,13%	8,98%	March	34.244	41.381	20,84%	23,05%	March	38.668	38.123	-1,41%	48,45%
April	35.885	36.438	1,54%	7,05%	April	34.349	34.220	-0,38%	16,74%	April	39.135	36.383	-7,03%	33,92%
May	37.667	41.402	9,92%	7,66%	May	37.482	42.645	13,77%	16,07%	May	34.384	43.911	27,71%	32,76%
June	39.611	39.777	0,42%	6,33%	June	34.810	44.788	28,66%	18,26%	June	36.942	37.028	0,23%	27,32%
July	39.473	38.975	-1,26%	5,16%	July	39.927	46.848	17,33%	18,11%	July	46.998	34.652	-26,27%	17,91%
August	37.606	41.201	9,56%	5,72%	August	40.774	49.772	22,07%	18,68%	August	49.620	28.540	-42,48%	8,47%
September	40.611	37.200	-8,40%	4,00%	September	37.907	45.632	20,38%	18,88%	September	40.909	29.421	-28,08%	4,29%
October	40.872	36.655	-10,32%	2,44%	October	44.737	48.235	7,82%	17,52%	October	48.973	27.469	-43,91%	-1,50%
November	31.559	31.089	-1,49%	2,13%	November	46.786	43.948	-6,07%	14,83%	November	38.565	28.070	-27,22%	-3,73%
December	32.529	28.125	-13,54%	0,97%	December	39.622	40.367	1,88%	13,69%	December	53.144	26.377	-50,37%	-8,70%
Total	438.322	442.573				449.560	511.096				498.942	455.557		

Full-unloaded domestic	Full TEU		%		Full-loaded domestic	Full TEU		%		Empty	Empty TEU		%	
	2010	2011	Monthly	Accumulated		2010	2011	Monthly	Accumulated		2010	2011	Monthly	Accumulated
January	1.589	1.228	-22,73%	-22,73%	January	6.404	5.581	-12,84%	-12,84%	January	36.035	46.817	29,92%	29,92%
February	1.532	1.294	-15,57%	-19,21%	February	6.564	6.112	-6,89%	-9,83%	February	30.074	38.346	27,51%	28,82%
March	1.743	1.326	-23,90%	-20,89%	March	6.729	6.835	1,57%	-5,94%	March	39.956	41.736	4,45%	19,64%
April	1.272	1.402	10,22%	-14,44%	April	7.510	7.098	-5,49%	-5,81%	April	33.935	41.220	21,47%	20,09%
May	1.511	1.260	-16,58%	-14,86%	May	7.612	7.290	-4,24%	-5,47%	May	39.356	56.562	43,72%	25,27%
June	1.494	1.264	-15,43%	-14,96%	June	6.311	6.806	7,84%	-3,43%	June	35.065	50.693	44,57%	28,43%
July	1.653	1.300	-21,36%	-15,94%	July	8.472	8.669	2,32%	-2,45%	July	42.497	44.526	4,77%	24,51%
August	1.330	1.007	-24,29%	-16,85%	August	6.295	5.893	-6,39%	-2,89%	August	37.562	45.808	21,95%	24,19%
September	1.622	1.373	-15,33%	-16,67%	September	6.863	6.774	-1,30%	-2,72%	September	42.133	48.889	16,04%	23,17%
October	1.330	1.389	4,44%	-14,81%	October	7.645	6.866	-10,19%	-3,53%	October	46.456	42.228	-9,10%	19,25%
November	1.348	1.449	7,46%	-12,98%	November	6.879	6.217	-9,62%	-4,07%	November	37.641	34.534	-8,25%	16,79%
December	1.303	1.269	-2,61%	-12,22%	December	6.185	6.046	-2,24%	-3,93%	December	39.701	37.228	-6,23%	14,81%
Total	17.724	15.558				83.467	80.183				460.409	528.584		

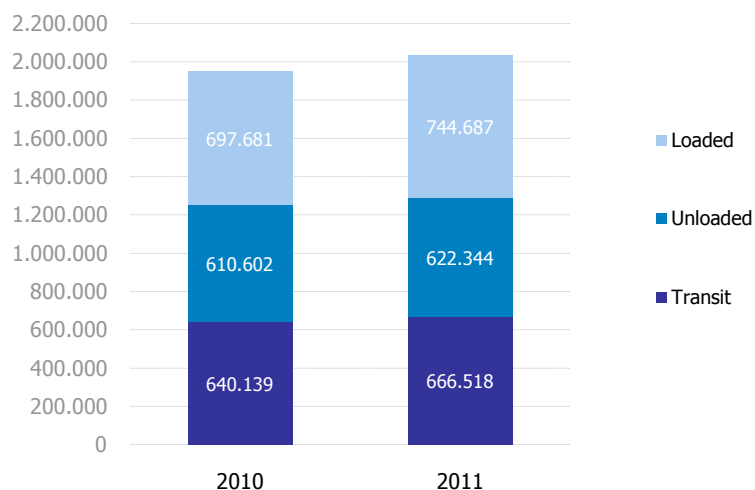
CONTAINER TRAFFIC

TEU

Container traffic (TEU)	Monthly accumulated 2010			Monthly accumulated 2011			%
	Domestic	Foreign	Total	Domestic	Foreign	Total	
Total traffic	183.429	1.764.993	1.948.422	197.267	1.836.282	2.033.549	4,37%
Unloaded	85.795	886.054	971.849	99.870	914.251	1.014.120	4,35%
Loaded	97.635	878.939	976.573	97.397	922.032	1.019.429	4,39%

Breakdown by navigation and operation (TEU)	Monthly accumulated 2010			Monthly accumulated 2011			%
	Domestic	Foreign	Total	Domestic	Foreign	Total	
Unloaded	97.528	600.154	697.681	97.347	647.340	744.687	6,74%
Full	83.467	449.560	533.026	80.183	511.096	591.278	10,93%
Empty	14.061	150.594	164.655	17.165	136.245	153.409	-6,83%
Loaded	81.644	528.959	610.602	82.789	539.555	622.344	1,92%
Full	17.724	438.322	456.045	15.558	442.573	458.130	0,46%
Empty	63.920	90.637	154.557	67.231	96.983	164.214	6,25%
Transit	4.258	635.881	640.139	17.131	649.387	666.518	4,12%
Full	60	498.882	498.942	14	455.543	455.557	-8,70%
Empty	4.198	136.999	141.197	17.117	193.845	210.962	49,41%
Total traffic	183.429	1.764.993	1.948.422	197.267	1.836.282	2.033.549	4,37%
Full	101.250	1.386.763	1.488.013	95.754	1.409.211	1.504.965	1,14%
Empty	82.179	378.230	460.409	101.513	427.072	528.584	14,81%
% Empty	44,80%	21,43%	23,63%	51,46%	23,26%	25,99%	
% Transit	2,32%	36,03%	32,85%	8,68%	35,36%	32,78%	

General cargo distribution by operation. (TEU)

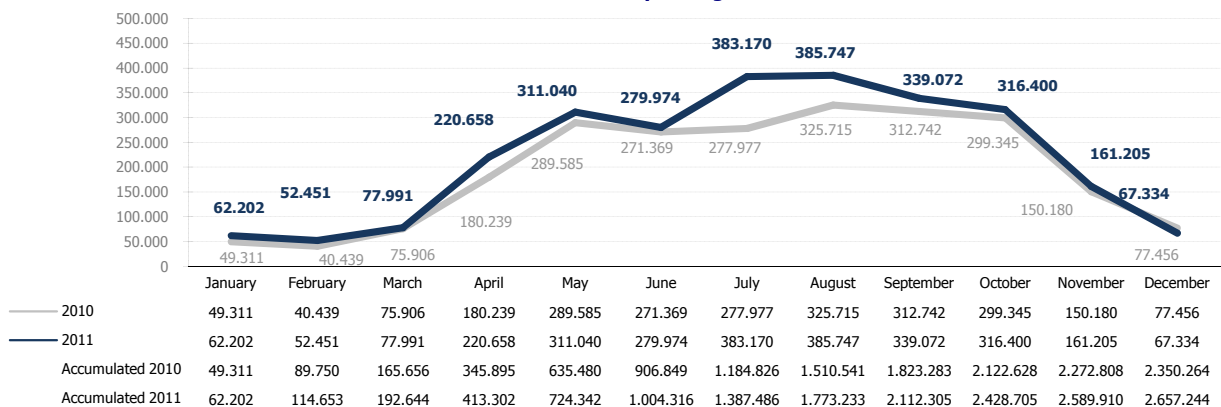


PASSENGER TRAFFIC

Total passenger traffic (u)	Monthly accumulated			% 11-10 accum. November	% 11-10 accum. October
	2010	2011	%		
Total passengers	3.457.939	3.827.062	10,67%	11,56%	11,78%
Embarkation	1.189.399	1.348.041	13,34%	14,53%	15,82%
Disembarkation	1.183.881	1.321.311	11,61%	13,16%	14,15%
Transit	1.084.659	1.157.710	6,73%	6,54%	4,49%
Regular line ferries	1.107.675	1.169.818	5,61%	6,44%	6,17%
Embarkation	556.954	591.662	6,23%	7,05%	7,08%
Disembarkation	550.721	578.156	4,98%	5,82%	5,24%
Domestic	594.612	663.416	11,57%	11,95%	10,95%
Embarkation	303.254	341.073	12,47%	12,73%	11,81%
Disembarkation	291.358	322.343	10,63%	11,13%	10,04%
European Union	392.576	388.518	-1,03%	-0,15%	0,31%
Embarkation	192.278	190.469	-0,94%	0,23%	0,59%
Disembarkation	200.298	198.049	-1,12%	-0,51%	0,03%
Other ferries	120.487	117.884	-2,16%	0,47%	1,01%
Embarkation	61.422	60.120	-2,12%	-0,01%	3,37%
Disembarkation	59.065	57.764	-2,20%	0,96%	-1,41%
Pleasure cruises	2.350.264	2.657.244	13,06%	13,95%	14,49%
Embarkation	632.445	756.379	19,60%	21,02%	23,62%
Disembarkation	633.160	743.155	17,37%	19,41%	21,95%
Transit	1.084.659	1.157.710	6,73%	6,54%	4,49%

Total passenger calls. (u)	Monthly accumulated			% 11-10 accum. November	% 11-10 accum. October
	2010	2011	%		
Total number of calls	3.335	3.368	0,99%	0,93%	0,56%
Regular Line ferries	2.492	2.487	-0,20%	-0,65%	-0,66%
Pleasure cruises	843	881	4,51%	5,41%	3,97%

Evolution of cruise passenger traffic.

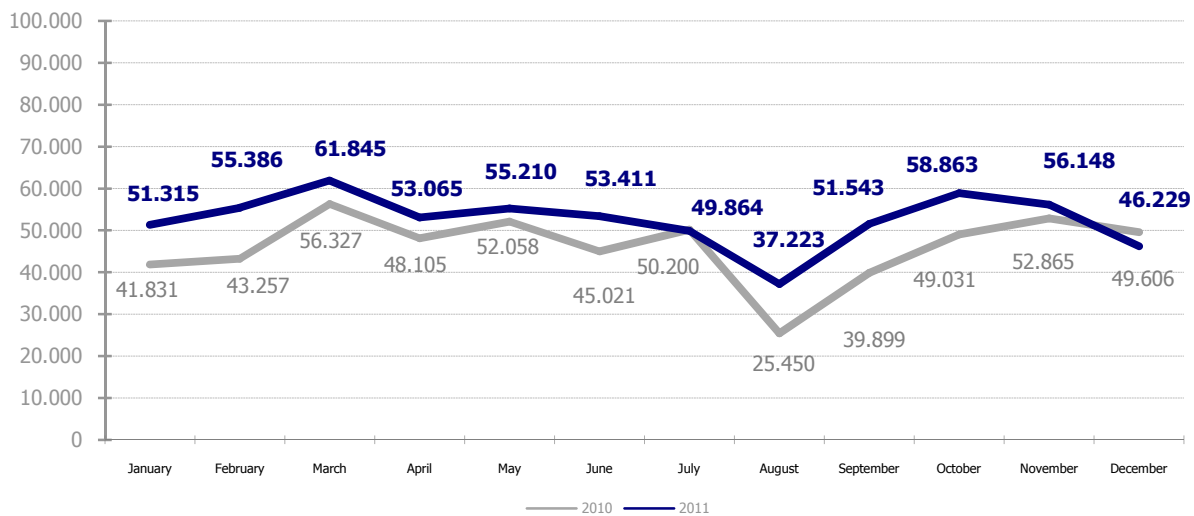


AUTOMOBILE TRAFFIC

Total automobile traffic (u)	Monthly accumulated			% 11-10	
	2010	2011	%	accum. November	accum. October
Automobile traffic by navigation and operation.	553.650	630.102	13,81%	15,76%	16,96%
Domestic	63.603	70.259	10,46%	9,93%	10,34%
Loaded	48.343	52.891	9,41%	8,50%	9,51%
Unloaded	15.255	17.367	13,84%	14,78%	13,96%
Transit	5	1	-80,00%	-80,00%	-80,00%
Foreign	490.047	559.843	14,24%	16,55%	17,86%
Loaded	278.083	348.332	25,26%	28,97%	33,21%
Unloaded	124.919	134.720	7,85%	7,07%	3,77%
Transit	87.045	76.791	-11,78%	-8,73%	-7,37%

Monthly automobile traffic (u)	Monthly		Accumulated		%	
	2010	2011	2010	2011	Monthly	Accumulated
January	41.831	51.315	41.831	51.315	22,67%	22,67%
February	43.257	55.386	85.088	106.701	28,04%	25,40%
March	56.327	61.845	141.415	168.546	9,80%	19,19%
April	48.105	53.065	189.520	221.611	10,31%	16,93%
May	52.058	55.210	241.578	276.821	6,05%	14,59%
June	45.021	53.411	286.599	330.232	18,64%	15,22%
July	50.200	49.864	336.799	380.096	-0,67%	12,86%
August	25.450	37.223	362.249	417.319	46,26%	15,20%
September	39.899	51.543	402.148	468.862	29,18%	16,59%
October	49.031	58.863	451.179	527.725	20,05%	16,97%
November	52.865	56.148	504.044	583.873	6,21%	15,84%
December	49.606	46.229	553.650	630.102	-6,81%	13,81%

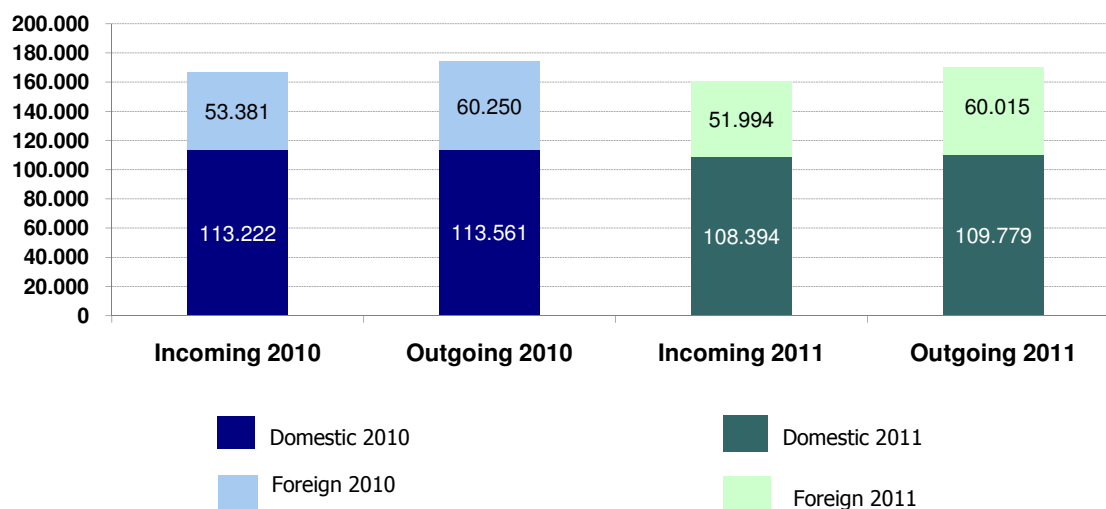
Evolution of monthly automobile traffic.



INTERMODAL TRANSPORT

UTI * (u)	Monthly accumulated 2010			Monthly accumulated 2011			%
	Domestic	Foreign	Total	Domestic	Foreign	Total	
Total UTI by direction	226.783	113.631	340.414	218.173	112.009	330.182	-3,01%
Incoming	113.222	53.381	166.603	108.394	51.994	160.388	-3,73%
Outgoing	113.561	60.250	173.811	109.779	60.015	169.794	-2,31%
Traffic of UTI by navigation and operation	Monthly accumulated 2010			Monthly accumulated 2011			%
	Domestic	Foreign	Total	Domestic	Foreign	Total	
Total	226.783	113.631	340.414	218.173	112.009	330.182	-3,01%
Full	137.208	104.985	242.193	134.111	105.178	239.289	-1,20%
Empty	89.575	8.646	98.221	84.062	6.831	90.893	-7,46%
Loaded	113.550	60.250	173.800	109.779	60.015	169.794	-2,30%
Full	110.057	57.695	167.752	106.948	58.433	165.381	-1,41%
Empty	3.493	2.555	6.048	2.831	1.582	4.413	-27,03%
Unloaded	113.212	53.381	166.593	108.394	51.993	160.387	-3,73%
Full	27.130	47.290	74.420	27.163	46.744	73.907	-0,69%
Empty	86.082	6.091	92.173	81.231	5.249	86.480	-6,18%
Transit	21	0	21	0	1	1	-95,24%
Full	21	0	21	0	1	1	-95,24%
Empty	0	0	0	0	0	0	-

UTI



UTI*: All those means of unitization, self-propelled or otherwise, that are directly or indirectly used as a means of land transport (e.g. trailers, platforms, trucks, freezer trucks, etc.) are considered as UTI. Containers are not considered to be included.

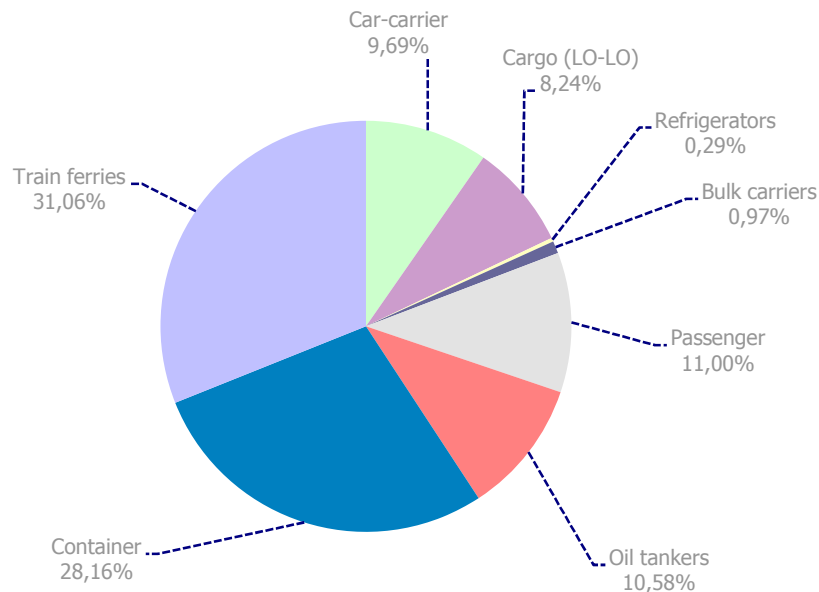
VESSELS TRAFFIC

Vessel traffic	Monthly accumulated		
	2010	2011	%
Number of calls	8.186	8.007	-2,19%
Tonnage	256.219.081	265.832.727	3,75%
Average tonnes	31.300	33.200	6,07%

Type of vessels	2010		2011		Monthly accumulated %	
	Calls	GT	Calls	GT	Calls	GT
Total	8.186	256.219.081	8.007	265.832.727	-2,19%	3,75%
Car-carrier	863	26.987.447	776	25.092.668	-10,08%	-7,02%
Cargo (LO-LO)	668	3.137.244	660	3.375.450	-1,20%	7,59%
Refrigerators	33	573.850	23	435.413	-30,30%	-24,12%
Bulk carriers	87	2.037.217	78	1.911.346	-10,34%	-6,18%
Passenger	851	64.301.948	881	70.926.893	3,53%	10,30%
Oil tankers	916	17.256.784	847	16.356.188	-7,53%	-5,22%
Container	2.275	70.824.305	2.255	75.976.088	-0,88%	7,27%
Train ferries	2.493	71.100.286	2.487	71.758.681	-0,24%	0,93%

Type of vessels (Monthly accumulated 2011)	Domestic		Foreign	
	Calls	GT	Calls	GT
Total	2.134	43.564.875	5.873	222.267.852
Car-carrier	155	2.657.440	621	22.435.228
Cargo (LO-LO)	13	69.904	647	3.305.546
Refrigerators	0	0	23	435.413
Bulk carriers	5	19.207	73	1.892.139
Passenger	12	402.855	869	70.524.038
Oil tankers	131	1.166.740	716	15.189.448
Container	229	2.600.013	2.026	73.376.075
Train ferries	1.589	36.648.716	898	35.109.965

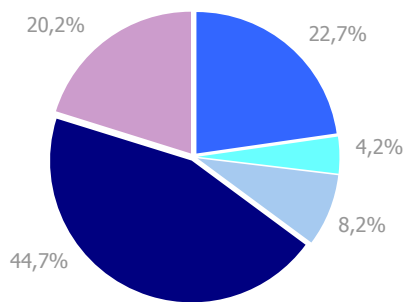
Distribution by type of vessel.



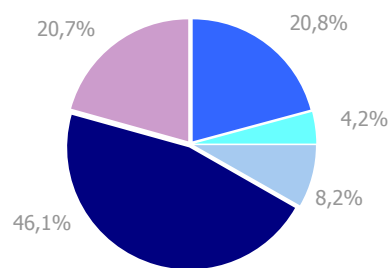
GOODS TRAFFIC

Mode of packaging and navigation (t)	Monthly accumulated 2010			Monthly accumulated 2011			%
	Domestic	Foreign	Total	Domestic	Foreign	Total	
Hydrocarbons	953.492	8.802.041	9.755.534	1.320.057	7.635.177	8.955.234	-8,20%
Incoming	951.784	8.627.956	9.579.740	1.294.189	7.379.881	8.674.071	-9,45%
Outgoing	1.709	174.085	175.794	25.868	255.296	281.164	59,94%
Other liquid bulk	245.333	1.553.855	1.799.188	245.716	1.560.552	1.806.268	0,39%
Incoming	139.076	1.149.761	1.288.836	105.943	1.156.341	1.262.284	-2,06%
Outgoing	106.257	404.094	510.351	139.773	404.211	543.984	6,59%
Dry bulk	69.074	3.472.852	3.541.926	93.338	3.450.959	3.544.297	0,07%
Incoming	59.832	2.607.557	2.667.389	70.685	2.533.961	2.604.645	-2,35%
Outgoing	9.242	865.295	874.537	22.653	916.999	939.652	7,45%
Containerized cargo	1.133.566	18.070.991	19.204.557	1.140.417	18.716.358	19.856.775	3,40%
Incoming	272.967	8.575.665	8.848.632	295.670	8.532.867	8.828.537	-0,23%
Outgoing	860.599	9.495.326	10.355.925	844.747	10.183.491	11.028.238	6,49%
Non-containerized cargo	3.804.640	4.872.434	8.677.073	3.895.355	5.007.530	8.902.884	2,60%
Incoming	1.347.241	2.195.133	3.542.374	1.365.129	2.073.082	3.438.210	-2,94%
Outgoing	2.457.398	2.677.301	5.134.700	2.530.226	2.934.448	5.464.674	6,43%
Total general cargo	4.938.206	22.943.425	27.881.630	5.035.772	23.723.887	28.759.659	3,15%
Incoming	1.620.208	10.770.798	12.391.005	1.660.799	10.605.949	12.266.747	-1,00%
Outgoing	3.317.998	12.172.627	15.490.625	3.374.973	13.117.939	16.492.912	6,47%
Total throughput	6.206.105	36.772.172	42.978.278	6.694.884	36.370.575	43.065.458	0,20%
Incoming	2.770.899	23.156.072	25.926.971	3.131.616	21.676.131	24.807.747	-4,32%
Outgoing	3.435.206	13.616.101	17.051.307	3.563.267	14.694.444	18.257.711	7,08%
Container traffic (TEU)	183.429	1.764.993	1.948.422	197.267	1.836.282	2.033.549	4,37%
Incoming	85.795	886.054	971.849	99.870	914.251	1.014.120	4,35%
Outgoing	97.635	878.939	976.573	97.397	922.032	1.019.429	4,39%

Distribution by mode of packaging 2010.

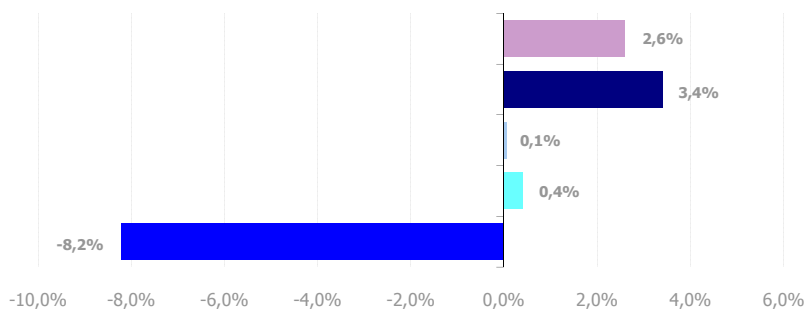


Distribution by mode of packaging 2011.



■ Hydrocarbons ■ Liquid bulk ■ Dry bulk ■ Containerized cargo ■ Non containerized cargo

Annual growth by mode of packaging.



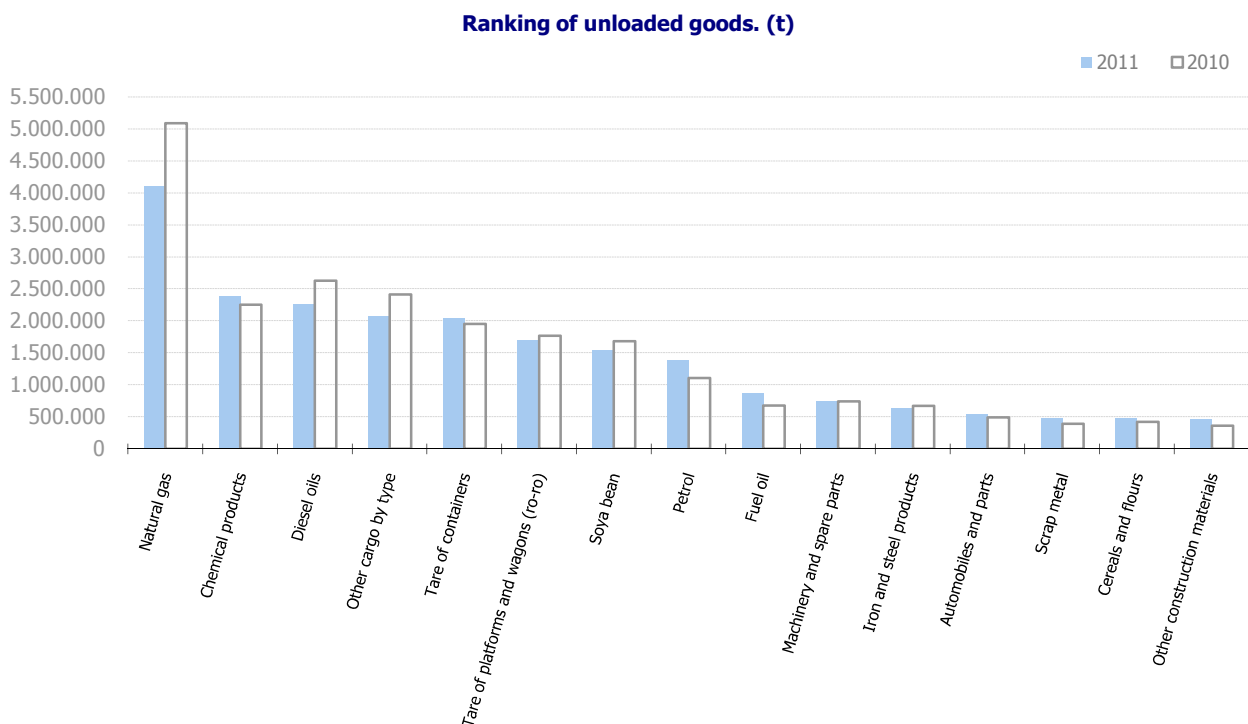
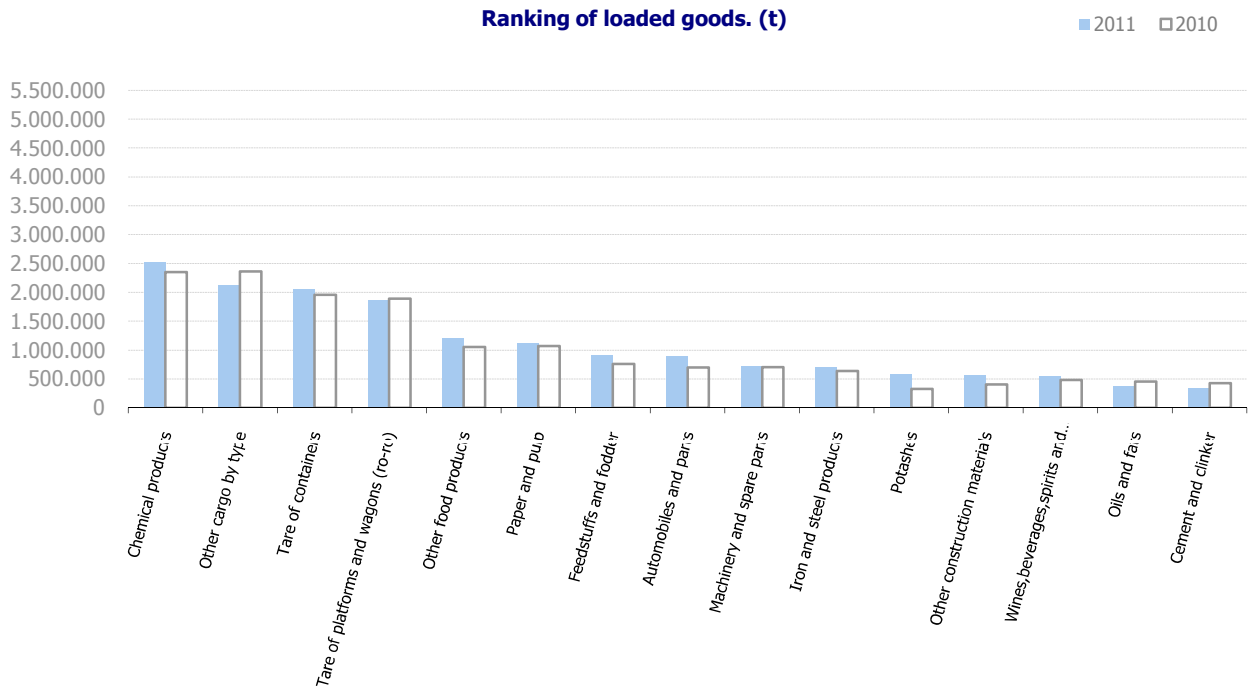
GOODS TRAFFIC

Goods by classification 4.3.7. (t)	Monthly accumulated		
	2010	2011	%
Total throughput	42.978.278	43.065.458	0,20%
Energy	10.175.038	9.320.933	-8,39%
Crude oil	840	419	-50,13%
Fuel oil	682.594	873.919	28,03%
Diesel oils	2.727.979	2.382.936	-12,65%
Petrol	1.184.285	1.542.582	30,25%
Other petroleum products	121.591	108.461	-10,80%
Petroleum fuel gasses	177.490	150.380	-15,27%
Coal	186.066	157.461	-15,37%
Natural gas	5.094.191	4.104.774	-19,42%
Iron and steel	1.827.406	1.911.055	4,58%
Iron ore	58.354	19.176	-67,14%
Scrap metal	461.066	566.959	22,97%
Iron and steel products	1.307.986	1.324.921	1,29%
Metallurgy	797.033	842.851	5,75%
Pyrites and calcinated pyrites	4.425	242	-94,54%
Other minerals	597.505	625.652	4,71%
Other metallurgical products	195.103	216.957	11,20%
Fertilizers	419.054	734.696	75,32%
Phosphates	2.820	18.579	558,74%
Potashes	331.024	582.414	75,94%
Natural/artificial fertilizers	85.210	133.703	56,91%
Chemicals	4.604.150	4.912.141	6,69%
Chemical products	4.604.150	4.912.141	6,69%
Construction materials	1.245.706	1.397.888	12,22%
Asphalt	3.815	3.748	-1,75%
Cement and clinker	475.691	369.975	-22,22%
Other construction materials	766.200	1.024.165	33,67%
Agriculture, livestock and food	7.110.652	7.309.447	2,80%
Cereals and flours	520.045	587.584	12,99%
Soya bean	1.683.146	1.539.100	-8,56%
Fruit, vegetables and pulses	506.559	551.045	8,78%
Wines, beverages, spirits and derivatives	585.073	671.003	14,69%
Canned goods	138.037	200.186	45,02%
Tobacco, coffee and cocoa	484.218	453.136	-6,42%
Oils and fats	867.601	731.057	-15,74%
Other food products	1.484.856	1.580.919	6,47%
Frozen fish	31.855	40.505	27,16%
Feedstuffs and fodder	809.262	954.913	18,00%
Other cargo	8.034.246	7.542.103	-6,13%
Timber	208.614	206.892	-0,83%
Common salt	129.760	119.175	-8,16%
Paper and pulp	1.476.059	1.561.154	5,77%
Machinery and spare parts	1.447.531	1.461.857	0,99%
Other cargo by type	4.772.282	4.193.024	-12,14%
Special transport	8.764.993	9.094.343	3,76%
Automobiles and parts	1.192.877	1.439.154	20,65%
Tare of platforms and wagons (ro-ro)	3.657.586	3.565.322	-2,52%
Tare of containers	3.914.530	4.089.867	4,48%

GOODS TRAFFIC

Goods ranking by classification 4.3.7. (t)

Ranking of goods (t)



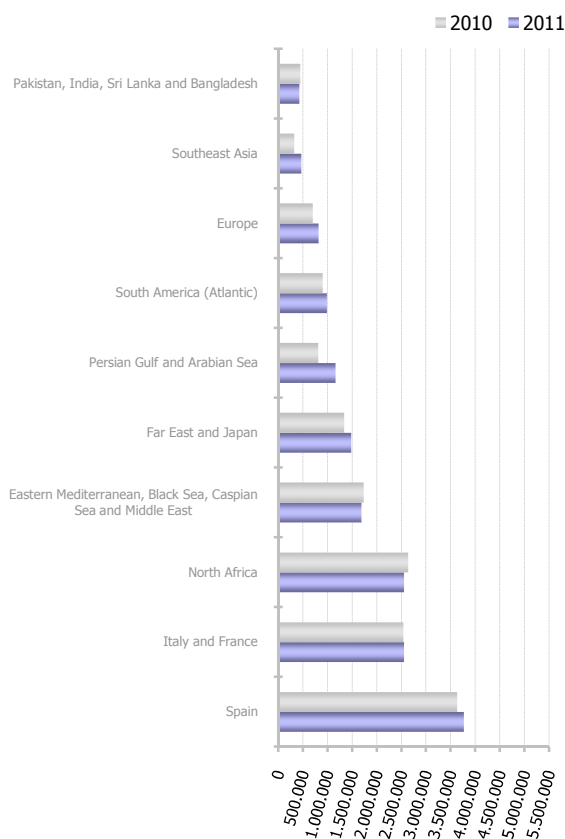
GOODS TRAFFIC

Goods classification by mode of packaging (t)	Hydrocarbons			Liquid bulk			Dry bulk			Containerized cargo			Non-containerized cargo			Total monthly accumulated		
	2010	2011	%	2010	2011	%	2010	2011	%	2010	2011	%	2010	2011	%	2010	2011	%
Total goods	9.755.534	8.955.234	-8,2%	1.799.188	1.806.268	0,4%	3.541.926	3.544.297	0,1%	19.204.557	19.856.775	3,4%	8.677.073	8.902.884	2,6%	42.978.278	43.065.458	0,2%
Crude oil	0	0		0	0		0	0		840	419	-50,1%	0	0		840	419	-50,1%
Fuel oil	675.244	865.569	28,2%	0	0		0	0		7.228	8.284	14,6%	122	66	-45,7%	682.594	873.919	28,0%
Diesel oils	2.727.668	2.382.815	-12,6%	0	0		0	0		312	103	-66,9%	0	18		2.727.979	2.382.936	-12,6%
Petrol	1.184.043	1.542.034	30,2%	0	0		0	0		242	490	102,5%	0	58		1.184.285	1.542.582	30,3%
Asphalt	0	0		0	0		0	0		1.263	485	-61,6%	2.552	3.263	27,8%	3.815	3.748	-1,8%
Other petroleum products	35.384	35.961	1,6%	24.384	16.864	-30,8%	0	0		61.057	55.212	-9,6%	767	424	-44,7%	121.591	108.461	-10,8%
Petroleum fuel gasses	20.160	25.434	26,2%	112.954	81.824	-27,6%	0	0		19.714	22.980	16,6%	24.663	20.142	-18,3%	177.490	150.380	-15,3%
Iron ore	0	0		0	0		0	0		23.405	10.543	-55,0%	34.949	8.633	-75,3%	58.354	19.176	-67,1%
Pyrites, calcinated pyrites	0	0		0	0		0	0		1.135	146	-87,2%	3.290	96	-97,1%	4.425	242	-94,5%
Other minerals	0	0		0	0		75.526	69.942	-7,4%	475.843	518.518	9,0%	46.136	37.192	-19,4%	597.505	625.652	4,7%
Scrap metal	0	0		0	0		329.441	401.268	21,8%	109.735	138.312	26,0%	21.891	27.379	25,1%	461.066	566.959	23,0%
Coal	23.611	2.753	-88,3%	0	0		120.368	119.342	-0,9%	40.821	33.788	-17,2%	1.266	1.577	24,6%	186.066	157.461	-15,4%
Iron and steel products	0	0		0	0		0	0		674.764	579.577	-14,1%	633.222	745.344	17,7%	1.307.986	1.324.921	1,3%
Phosphates	0	0		0	4.531		0	0		2.776	13.950	402,5%	44	98	122,2%	2.820	18.579	558,7%
Potashes	0	0		0	0		322.779	561.135	73,8%	8.202	21.279	159,5%	44	0	-100,0%	331.024	582.414	75,9%
Natural/artificial fertiliser	0	0		9.116	37.304	309,2%	4.000	0		67.822	94.994	40,1%	4.271	1.406	-67,1%	85.210	133.703	56,9%
Chemical products	0	0		1.031.111	1.184.820	14,9%	58.498	22.962	-60,7%	3.418.125	3.595.895	5,2%	96.415	108.465	12,5%	4.604.150	4.912.141	6,7%
Cement and clinker	0	0		0	0		404.109	282.829	-30,0%	37.746	33.209	-12,0%	33.836	53.938	59,4%	475.691	369.975	-22,2%
Timber	0	0		0	0		0	0		199.318	195.627	-1,9%	9.295	11.265	21,2%	208.614	206.892	-0,8%
Other construction materials	0	0		0	0		0	0		706.335	952.616	34,9%	59.865	71.549	19,5%	766.200	1.024.165	33,7%
Cereals and flours	0	0		0	0		345.086	398.781	15,6%	163.228	175.364	7,4%	11.732	13.440	14,6%	520.045	587.584	13,0%
Soya bean	0	0		0	0		1.676.297	1.534.101	-8,5%	6.406	4.853	-24,2%	443	146	-67,0%	1.683.146	1.539.100	-8,6%
Fruit, vegetables and pulses	0	0		0	0		5.896	10.689	81,3%	358.447	391.737	9,3%	142.216	148.619	4,5%	506.559	551.045	8,8%
Wines, beverages, spirits and derivatives	0	0		15.370	8.437	-45,1%	0	0		410.752	472.517	15,0%	158.950	190.049	19,6%	585.073	671.003	14,7%
Common salt	0	0		0	0		114.375	104.094	-9,0%	14.441	13.637	-5,6%	945	1.445	52,9%	129.760	119.175	-8,2%
Paper and pulp	0	0		0	0		0	0		1.308.971	1.362.996	4,1%	167.088	198.158	18,6%	1.476.059	1.561.154	5,8%
Canned goods	0	0		0	0		0	0		132.830	192.445	44,9%	5.207	7.741	48,7%	138.037	200.186	45,0%
Tobacco, coffee and cocoa	0	0		0	0		0	0		483.421	452.430	-6,4%	797	707	-11,4%	484.218	453.136	-6,4%
Oils and fats	0	0		590.251	472.488	-20,0%	0	0		151.803	159.043	4,8%	125.548	99.526	-20,7%	867.601	731.057	-15,7%
Other food products	0	0		16.001	0	-100,0%	0	0		904.193	872.511	-3,5%	564.662	708.407	25,5%	1.484.856	1.580.919	6,5%
Machinery and spare parts	0	0		0	0		0	0		1.298.112	1.330.399	2,5%	149.419	131.458	-12,0%	1.447.531	1.461.857	1,0%
Automobiles and parts	0	0		0	0		0	0		376.082	408.767	8,7%	816.795	1.030.387	26,2%	1.192.877	1.439.154	20,6%
Frozen fish	0	0		0	0		0	0		31.410	39.429	25,5%	445	1.076	141,8%	31.855	40.505	27,2%
Other cargo by type	0	0		0	0		0	0		2.899.946	2.503.998	-13,7%	1.872.336	1.689.026	-9,8%	4.772.282	4.193.024	-12,1%
Natural gas	5.089.424	4.100.668	-19,4%	0	0		0	0		593	981	65,2%	4.174	3.125	-25,1%	5.094.191	4.104.774	-19,4%
Other metallurgical products	0	0		0	0		0	0		189.320	208.946	10,4%	5.783	8.011	38,5%	195.103	216.957	11,2%
Feedstuffs and fodder	0	0		0	0		85.553	39.154	-54,2%	697.908	892.450	27,9%	25.801	23.308	-9,7%	809.262	954.913	18,0%
Tare of platforms and wagons (ro-ro)	0	0		0	0		0	0		6.565	8.179	24,6%	3.651.021	3.557.143	-2,6%	3.657.586	3.565.322	-2,5%
Tare of containers	0	0		0	0		0	0		3.913.446	4.089.666	4,5%	1.084	201	-81,5%	3.914.530	4.089.867	4,5%

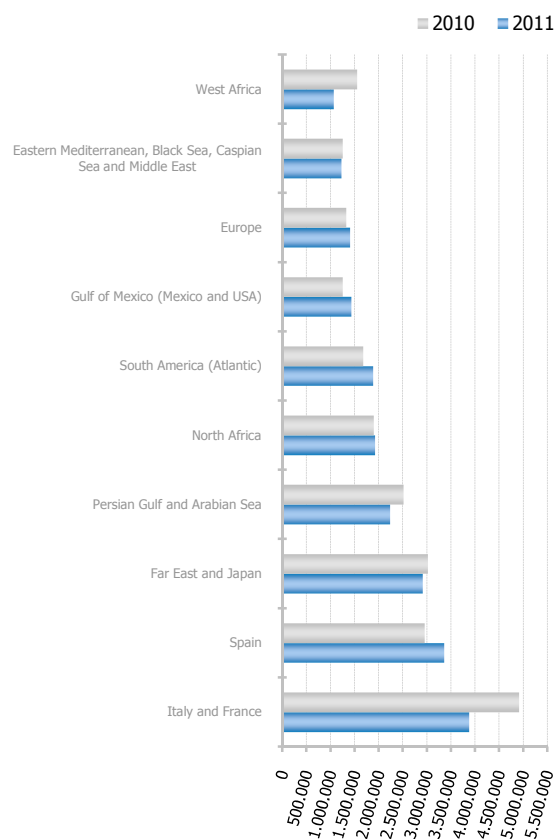
TRAFFIC BY ORIGIN AND DESTINATION.

Geographical areas (t)	Monthly accumulated		
	2010	2011	%
Spain	6.583.124	7.127.508	8,27%
Italy and France	7.454.747	6.427.829	-13,78%
North Africa	4.529.047	4.477.375	-1,14%
Far East and Japan	4.361.026	4.388.346	0,63%
Persian Gulf and Arabian Sea	3.321.423	3.395.225	2,22%
Eastern Mediterranean, Black Sea, Caspian Sea and Middle East	2.989.593	2.913.764	-2,54%
South America (Atlantic)	2.575.762	2.869.130	11,39%
Europe	2.021.587	2.219.312	9,78%
Gulf of Mexico (Mexico and USA)	1.532.082	1.760.104	14,88%
Southeast Asia	1.241.272	1.438.932	15,92%
West Africa	1.844.442	1.432.550	-22,33%
Pakistan, India, Sri Lanka and Bangladesh	1.186.311	1.146.991	-3,31%
Red Sea	539.629	751.468	39,26%
Central America and Caribbean	780.534	615.529	-21,14%
North America (Atlantic)	471.470	573.698	21,68%
South America (Pacific)	359.621	438.770	22,01%
South-eastern Africa and Indian Ocean	301.511	370.013	22,72%
Canada (Atlantic) and Great Lakes	448.363	356.676	-20,45%
Australia, New Zealand and Pacific Islands	265.335	242.441	-8,63%
North America (Pacific)	129.453	61.569	-52,44%
Unknown area (Tare of empty containers)	41.944	58.229	38,83%

Main areas of destination. (t)



Main areas of origin. (t)



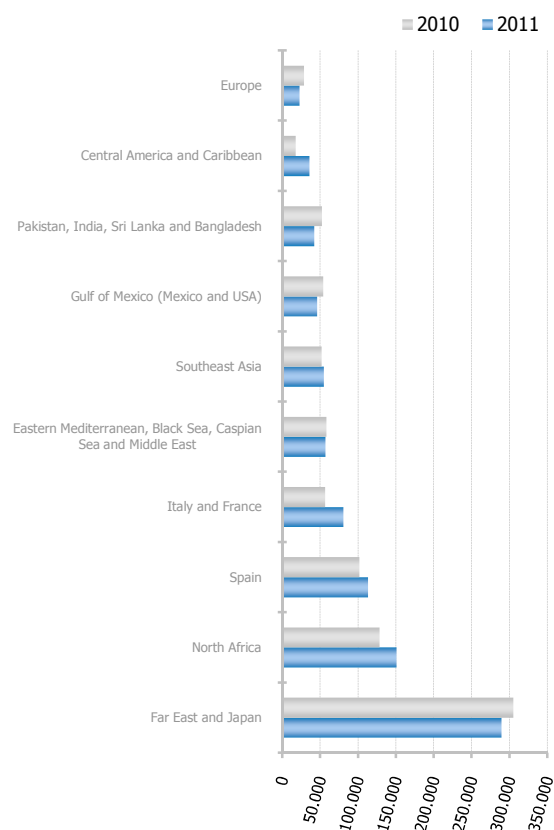
TRAFFIC BY ORIGIN AND DESTINATION.

Geographical areas (TEU)	Monthly accumulated		
	2010	2011	%
Far East and Japan	502.140	474.597	-5,49%
North Africa	296.450	321.090	8,31%
Spain	212.342	221.953	4,53%
Eastern Mediterranean, Black Sea, Caspian Sea and Middle East	162.205	165.943	2,30%
Italy and France	99.532	121.408	21,98%
Persian Gulf and Arabian Sea	73.640	101.798	38,24%
Southeast Asia	82.738	95.220	15,09%
South America (Atlantic)	96.448	79.816	-17,24%
Gulf of Mexico (Mexico and USA)	74.948	73.978	-1,29%
Pakistan, India, Sri Lanka and Bangladesh	83.637	73.571	-12,03%
Central America and Caribbean	35.157	53.588	52,42%
Red Sea	31.589	40.988	29,76%
North America (Atlantic)	34.264	40.070	16,94%
Europe	46.711	35.172	-24,70%
West Africa	23.462	29.705	26,61%
Unknown area (Tare of empty containers)	18.814	28.059	49,14%
South-eastern Africa and Indian Ocean	23.672	24.644	4,11%
South America (Pacific)	21.439	21.403	-0,17%
Canada (Atlantic) and Great Lakes	13.582	14.733	8,47%
Australia, New Zealand and Pacific Islands	9.026	10.609	17,54%
North America (Pacific)	6.631	5.208	-21,46%

Main areas of destination. (TEU)



Main areas of origin. (TEU)



TRAFFIC BY ORIGIN AND DESTINATION

Countries by mode of packaging. Load (Transit not included)

Liquid bulk			Dry bulk		
	Tonnes	% a/packaging		Tonnes	% a/packaging
Spain	165.641	29,56%	Netherlands	206.739	22,11%
Portugal	114.507	20,43%	Brazil	178.640	19,11%
Italy	62.728	11,19%	Puerto Rico	105.789	11,31%
Morocco	49.123	8,77%	Uruguay	61.591	6,59%
Algeria	47.240	8,43%	France	55.293	5,91%
Republic of South Africa	29.960	5,35%	Malaysia	50.880	5,44%
Israel	18.602	3,32%	Portugal	36.136	3,87%
France	18.300	3,27%	Argentina	35.701	3,82%
Netherlands	14.751	2,63%	United Kingdom	27.272	2,92%
United Kingdom	7.800	1,39%	Italy	26.218	2,80%
United States	7.500	1,34%	India	25.355	2,71%
Malta	6.134	1,09%	Spain	22.653	2,42%
Tunisia	5.700	1,02%	Algeria	22.243	2,38%
Cyprus	4.640	0,83%	Mauritania	21.332	2,28%
Saudi Arabia	3.684	0,66%	Indonesia	17.500	1,87%
Remainder	4.088	0,73%	Remainder	41.610	4,45%
TOTAL	560.400	100%	TOTAL	934.953	100%

Containerized cargo			Non-containerized cargo		
	TEU	% a/packaging		Tonnes	% a/packaging
China	111.119	14,92%	Spain	2.536.053	46,90%
Spain	98.022	13,16%	Italy	2.113.054	39,08%
United Arab Emirates	63.323	8,50%	Turkey	100.832	1,86%
Turkey	40.318	5,41%	United Kingdom	90.441	1,67%
Algeria	29.736	3,99%	United Arab Emirates	86.824	1,61%
United States	26.806	3,60%	Algeria	64.471	1,19%
Brazil	22.361	3,00%	Israel	56.866	1,05%
Saudi Arabia	21.002	2,82%	Morocco	42.130	0,78%
Morocco	20.266	2,72%	Netherlands	41.618	0,77%
Singapore	18.759	2,52%	Mexico	28.463	0,53%
Mexico	16.819	2,26%	Republic of South Africa	23.001	0,43%
South Korea	14.050	1,89%	Australia	21.027	0,39%
Hong Kong	14.008	1,88%	Tunisia	20.841	0,39%
India	13.383	1,80%	Greece	17.825	0,33%
Italy	13.249	1,78%	Russian Federation	17.542	0,32%
Remainder	221.469	29,74%	Remainder	145.839	2,70%
TOTAL	744.687	100%	TOTAL	5.406.829	100%

TRAFFIC BY ORIGIN AND DESTINATION

Countries by mode of packaging. Unload (Transit not included)

Liquid bulk			Dry bulk		
	Tonnes	% a/packaging		Tonnes	% a/packaging
Qatar	1.627.409	16,55%	Brazil	988.929	38,04%
Spain	1.400.133	14,24%	Argentina	291.337	11,21%
Italy	1.135.213	11,55%	United States	281.750	10,84%
Nigeria	937.380	9,53%	Russian Federation	139.005	5,35%
United States	651.939	6,63%	Canada	105.364	4,05%
Algeria	640.156	6,51%	Ukraine	90.248	3,47%
Egypt	599.413	6,10%	Lithuania	77.921	3,00%
France	273.906	2,79%	Bulgaria	73.084	2,81%
Norway	255.790	2,60%	Romania	71.528	2,75%
Saudi Arabia	244.450	2,49%	Spain	70.685	2,72%
Indonesia	242.794	2,47%	France	59.498	2,29%
Kuwait	165.919	1,69%	Turkey	46.656	1,79%
Russian Federation	154.396	1,57%	Ireland	40.350	1,55%
India	153.486	1,56%	Germany	37.096	1,43%
Argentina	142.895	1,45%	Denmark	29.879	1,15%
Remainder	1.206.706	12,27%	Remainder	196.425	7,56%
TOTAL	9.831.984	100%	TOTAL	2.599.755	100%

Containerized cargo			Non-containerized cargo		
	TEU	% a/packaging		Tonnes	% a/packaging
China	187.924	30,20%	Italy	1.748.424	51,82%
Spain	82.847	13,31%	Spain	1.368.317	40,56%
United States	21.858	3,51%	South Korea	68.084	2,02%
Morocco	20.420	3,28%	Japan	38.939	1,15%
Algeria	20.420	3,28%	India	26.343	0,78%
India	19.250	3,09%	Morocco	24.097	0,71%
Turkey	18.772	3,02%	Tunisia	22.214	0,66%
Saudi Arabia	16.644	2,67%	United Kingdom	18.005	0,53%
Vietnam	16.374	2,63%	Turkey	11.159	0,33%
Hong Kong	16.005	2,57%	France	8.308	0,25%
Italy	15.385	2,47%	Netherlands	6.995	0,21%
Japan	13.158	2,11%	Greece	6.094	0,18%
Brazil	10.863	1,75%	Ukraine	6.015	0,18%
Egypt	10.834	1,74%	Russian Federation	5.131	0,15%
Taiwan	10.382	1,67%	China	3.158	0,09%
Remainder	141.211	22,69%	Remainder	12.513	0,37%
TOTAL	622.344	100%	TOTAL	3.373.795	100%

TRAFFIC BY ORIGIN AND DESTINATION

Total countries by mode of packaging. (Transit not included)

Liquid bulk			Dry bulk		
	Tonnes	% a/packaging		Tonnes	% a/packaging
Qatar	1.627.409	15,66%	Brazil	1.167.569	33,03%
Spain	1.565.774	15,07%	Argentina	327.038	9,25%
Italy	1.197.941	11,53%	United States	281.750	7,97%
Nigeria	938.956	9,04%	Netherlands	226.524	6,41%
Algeria	687.397	6,61%	Russian Federation	139.005	3,93%
United States	659.439	6,35%	France	114.791	3,25%
Egypt	599.413	5,77%	Puerto Rico	105.789	2,99%
France	292.207	2,81%	Canada	105.364	2,98%
Norway	255.790	2,46%	Spain	93.338	2,64%
Saudi Arabia	248.134	2,39%	Ukraine	90.248	2,55%
Indonesia	242.794	2,34%	Lithuania	77.921	2,20%
Kuwait	165.919	1,60%	Bulgaria	73.084	2,07%
Portugal	163.047	1,57%	Romania	71.528	2,02%
Russian Federation	154.396	1,49%	Uruguay	61.591	1,74%
India	153.499	1,48%	Turkey	50.956	1,44%
Remainder	1.440.270	13,86%	Remainder	548.212	15,51%
TOTAL	10.392.384	100%	TOTAL	3.534.707	100%

Containerized cargo			Non-containerized cargo		
	TEU	% a/packaging		Tonnes	% a/packaging
China	299.042	21,88%	Spain	3.904.369	44,47%
Spain	180.869	13,23%	Italy	3.861.479	43,98%
United Arab Emirates	66.032	4,83%	Turkey	111.992	1,28%
Turkey	59.090	4,32%	United Kingdom	108.447	1,24%
Algeria	50.155	3,67%	United Arab Emirates	86.870	0,99%
United States	48.664	3,56%	South Korea	69.660	0,79%
Morocco	40.686	2,98%	Morocco	66.228	0,75%
Saudi Arabia	37.646	2,75%	Algeria	64.474	0,73%
Brazil	33.224	2,43%	Israel	56.964	0,65%
India	32.633	2,39%	Netherlands	48.613	0,55%
Hong Kong	30.013	2,20%	Tunisia	43.055	0,49%
Italy	28.634	2,09%	Japan	40.669	0,46%
Japan	24.683	1,81%	India	29.536	0,34%
Mexico	23.787	1,74%	Mexico	28.471	0,32%
Taiwan	23.140	1,69%	Republic of South Africa	24.391	0,28%
Remainder	388.736	28,44%	Remainder	235.408	2,68%
TOTAL	1.367.031	100%	TOTAL	8.780.624	100%