

**Port of Barcelona traffic statistics**

**Accumulated data December 2010**

**Statistics Service**

## Index

---

### Traffic indicators

Total traffic	3
Breakdown of traffic. I	4
Breakdown of traffic. II	5
Monthly evolution of traffic	6

### Goods traffic

Mode of packaging and navigation	7
4.3.7 goods classification	8
Goods ranking	9
Goods classification by mode of packaging	10

### Traffic by origin and destination

Geographical areas (Tonnes)	11
Geographical areas (TEU)	12
Countries by mode of packaging. Load	13
Countries by mode of packaging. Unloading	14
Total countries by mode of packaging	15

### Container traffic

Container traffic (TEU)	16
-------------------------	----

### Passenger traffic

Passenger traffic	17
-------------------	----

### Automobile traffic

Automobile traffic	18
--------------------	----

### Intermodal transport

UTI (Intermodal transport unit)	19
---------------------------------	----

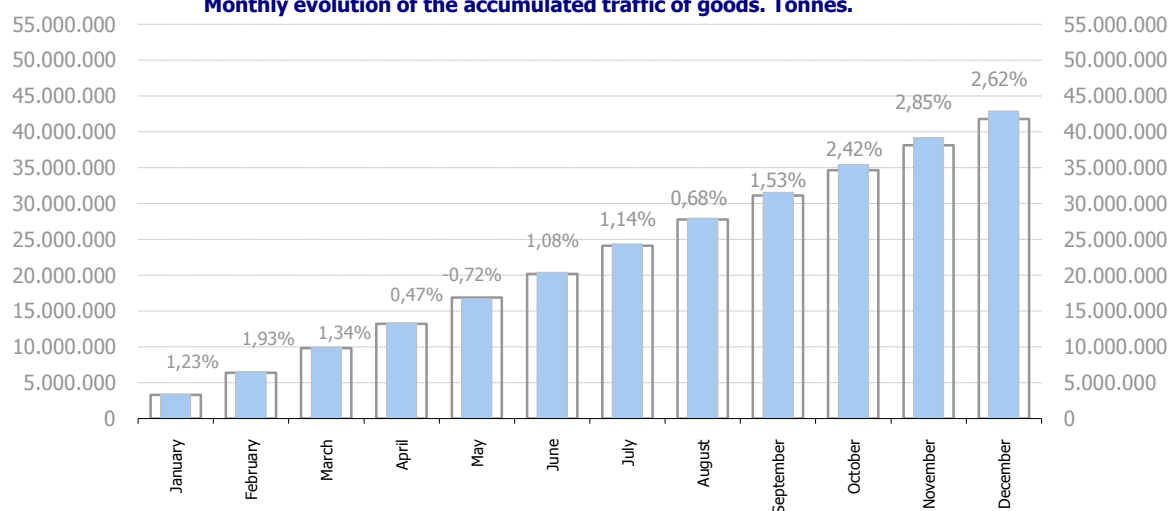
### Vessel traffic

Vessel traffic	20
----------------	----

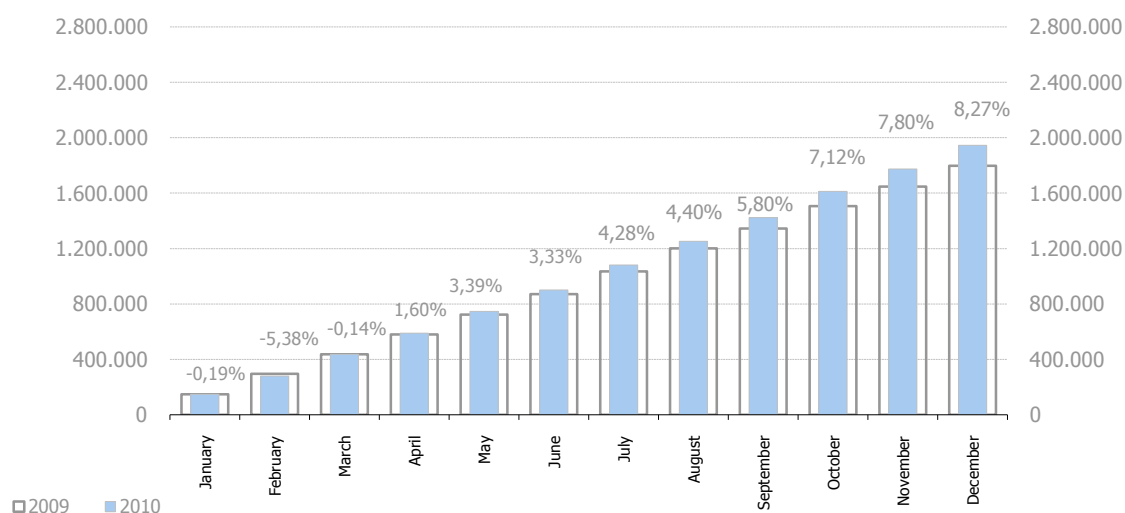
## TRAFFIC INDICATORS

Total traffic	Accumulated data December 2010			% 10-09 accum. November	% 10-09 accum. October	Total traffic 2009
	2009	2010	%			
<b>Total throughput (t)</b>	<b>41.781.476</b>	<b>42.876.954</b>	<b>2,62%</b>	<b>2,76%</b>	<b>2,31%</b>	<b>41.781.476</b>
Food supplying	1.184.676	1.108.210	-6,45%	-9,03%	-8,53%	1.184.676
Fishing	2.309	2.723	17,94%	4,03%	3,22%	2.309
<b>TOTAL TRAFFIC (t)</b>	<b>42.968.461</b>	<b>43.987.887</b>	<b>2,37%</b>	<b>2,42%</b>	<b>1,99%</b>	<b>42.968.461</b>
<b>TEU</b>	<b>1.797.156</b>	<b>1.945.733</b>	<b>8,27%</b>	<b>7,52%</b>	<b>6,86%</b>	<b>1.797.156</b>
<b>Vessels (units)</b>	<b>8.418</b>	<b>8.180</b>	<b>-2,83%</b>	<b>-3,03%</b>	<b>-3,21%</b>	<b>8.418</b>
<b>Passengers (units)</b>	<b>3.201.737</b>	<b>3.444.491</b>	<b>7,58%</b>	<b>7,37%</b>	<b>9,38%</b>	<b>3.201.737</b>
<b>Automobiles (units)</b>	<b>438.654</b>	<b>550.874</b>	<b>25,58%</b>	<b>28,50%</b>	<b>32,75%</b>	<b>438.654</b>

Monthly evolution of the accumulated traffic of goods. Tonnes.



Monthly evolution of the accumulated traffic of goods. TEU.



## TRAFFIC INDICATORS

Breakdown of traffic. I	Accumulated data December 2010			% 10-09 accum. November	% 10-09 accum. October	% of total accum. 2010
	2009	2010	%			
<b>Goods indicators by type of packaging (t)</b>	<b>41.781.476</b>	<b>42.876.954</b>	<b>2,62%</b>	<b>2,76%</b>	<b>2,31%</b>	<b>100,00%</b>
<b>Liquid bulk</b>	<b>11.755.849</b>	<b>11.558.156</b>	<b>-1,68%</b>	<b>-0,95%</b>	<b>-2,31%</b>	<b>26,96%</b>
<b>Hydrocarbons</b>	<b>9.955.639</b>	<b>9.758.969</b>	<b>-1,98%</b>	<b>-1,15%</b>	<b>-2,85%</b>	<b>22,76%</b>
Natural gas	4.770.904	5.089.424	6,68%	9,92%	6,80%	11,87%
Diesel oils	2.997.275	2.730.533	-8,90%	-10,37%	-11,55%	6,37%
Petrol	1.394.178	1.184.043	-15,07%	-14,45%	-15,75%	2,76%
Fuel oil	700.967	675.814	-3,59%	-7,74%	-0,73%	1,58%
Other petroleum products	51.204	35.384	-30,90%	-33,18%	-35,44%	0,08%
Remainder	41.111	43.771	6,47%	28,45%	16,70%	0,10%
<b>Other liquid bulk</b>	<b>1.800.211</b>	<b>1.799.188</b>	<b>-0,06%</b>	<b>0,13%</b>	<b>0,68%</b>	<b>4,20%</b>
Chemical products	925.094	1.031.111	11,46%	11,70%	7,99%	2,40%
Oils and fats	739.333	590.251	-20,16%	-20,13%	-16,30%	1,38%
Petroleum fuel gasses	111.966	112.954	0,88%	0,14%	6,53%	0,26%
Other petroleum products	15.944	24.384	52,94%	63,48%	64,62%	0,06%
Wines, beverages, spirits and derivatives	3.169	15.370	384,99%	384,99%	315,86%	0,04%
Remainder	4.705	25.117	433,83%	433,83%	433,83%	0,06%
<b>Dry bulk</b>	<b>3.913.180</b>	<b>3.542.218</b>	<b>-9,48%</b>	<b>-9,79%</b>	<b>-7,68%</b>	<b>8,26%</b>
<b>Special installation</b>	<b>3.022.533</b>	<b>2.839.999</b>	<b>-6,04%</b>	<b>-6,24%</b>	<b>-4,28%</b>	<b>6,62%</b>
Soya bean	1.366.347	1.676.577	22,71%	15,31%	17,51%	3,91%
Cement and clinker	705.123	404.109	-42,69%	-44,65%	-43,36%	0,94%
Cereals and flours	597.817	345.086	-42,28%	-32,08%	-29,30%	0,80%
Potashes	232.370	322.779	38,91%	56,05%	53,52%	0,75%
Feedstuffs and fodder	113.012	85.553	-24,30%	-13,75%	-15,26%	0,20%
Remainder	7.865	5.896	-25,03%	-25,03%	-25,03%	0,01%
<b>Without special installation</b>	<b>890.647</b>	<b>702.219</b>	<b>-21,16%</b>	<b>-21,40%</b>	<b>-18,97%</b>	<b>1,64%</b>
Scrap metal	570.029	329.441	-42,21%	-41,97%	-43,76%	0,77%
Coal	102.977	120.368	16,89%	16,89%	85,24%	0,28%
Common salt	92.319	114.375	23,89%	22,37%	16,55%	0,27%
Other minerals	57.142	75.526	32,17%	24,75%	30,53%	0,18%
Chemical products	65.030	58.498	-10,04%	-12,77%	-12,26%	0,14%
Remainder	3.149	4.012	27,39%	-99,63%	-99,63%	0,01%
<b>General cargo</b>	<b>26.112.447</b>	<b>27.776.580</b>	<b>6,37%</b>	<b>6,27%</b>	<b>5,84%</b>	<b>64,78%</b>
<b>Containerized</b>	<b>17.612.181</b>	<b>19.187.449</b>	<b>8,94%</b>	<b>8,76%</b>	<b>8,11%</b>	<b>44,75%</b>
Tares of containers (O/D+Transit)	3.619.723	3.908.030	7,96%	7,19%	6,53%	9,11%
Chemical products	3.021.445	3.413.437	12,97%	14,53%	13,58%	7,96%
Other cargo by type	2.648.978	2.872.045	8,42%	8,39%	9,85%	6,70%
Paper and pulp	1.297.938	1.308.754	0,83%	0,89%	0,87%	3,05%
Machinery and spare parts	1.113.088	1.297.805	16,59%	16,48%	17,22%	3,03%
Remainder	5.911.008	6.387.378	8,06%	7,26%	5,45%	14,90%
<b>Non-containerized</b>	<b>8.500.266</b>	<b>8.589.131</b>	<b>1,05%</b>	<b>1,23%</b>	<b>1,21%</b>	<b>20,03%</b>
Tare of platform and wagons (Ro-ro)	3.505.452	3.599.597	2,69%	2,57%	2,73%	8,40%
Other cargo by type	1.929.470	1.828.502	-5,23%	-5,46%	-3,86%	4,26%
Automobiles and parts	614.480	813.451	32,38%	33,99%	36,30%	1,90%
Iron and steel products	706.695	632.682	-10,47%	-8,29%	-11,13%	1,48%
Other food products	548.731	556.500	1,42%	-0,29%	-3,24%	1,30%
Remainder	1.195.438	1.158.400	-3,10%	-1,85%	-2,50%	2,70%

## TRAFFIC INDICATORS

Breakdown of traffic. II	Monthly accumulated			Last 12 months	Total traffic 2009	% 12 months-2009
	2009	2010	%			

### Goods indicators by navigation and operation.

Navigation (t)	41.781.476	42.876.954	2,62%	42.876.954	41.781.476	2,62%
Domestic	6.645.643	6.116.045	-7,97%	6.116.045	6.645.643	-7,97%
Foreign	35.135.833	36.760.909	4,63%	36.760.909	35.135.833	4,63%
Operation (t)	41.781.476	42.876.954	2,62%	42.876.954	41.781.476	2,62%
Loaded	12.162.780	13.225.279	8,74%	13.225.279	12.162.780	8,74%
Unloaded	22.081.751	22.154.584	0,33%	22.154.584	22.081.751	0,33%
Transit	7.536.945	7.497.092	-0,53%	7.497.092	7.536.945	-0,53%

### Goods indicators by main units.

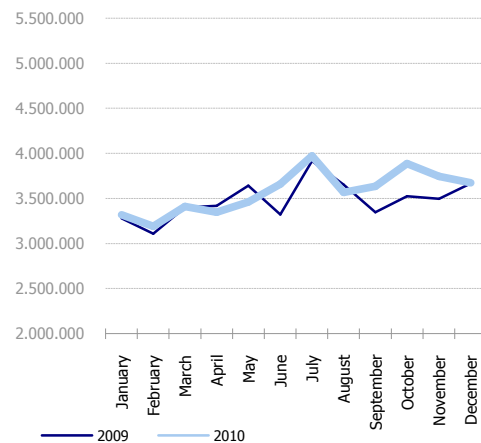
Containers (TEU)	1.797.156	1.945.733	8,27%	1.945.733	1.797.156	8,27%
TEU O/D	1.199.836	1.307.725	8,99%	1.307.725	1.199.836	8,99%
TEU transit	597.320	638.007	6,81%	638.007	597.320	6,81%
Containerized tonnes	17.612.181	19.187.449	8,94%	19.187.449	17.612.181	8,94%
Level of containerization	67,45%	69,08%	2,42%	69,08%	67,45%	2,42%
Automobiles (u)	438.654	550.874	25,58%	550.874	438.654	25,58%
Loaded	244.802	325.995	33,17%	325.995	244.802	33,17%
Unloaded	116.949	138.567	18,48%	138.567	116.949	18,48%
Transit	76.903	86.312	12,23%	86.312	76.903	12,23%
Vessels (u)	8.418	8.180	-2,83%	8.180	8.418	-2,83%
Number of calls	8.418	8.180	-2,83%	8.180	8.418	-2,83%
GT	245.290.654	256.079.490	4,40%	256.079.490	245.290.654	4,40%
Average tonnes by vessel	4.963	5.242	5,61%	5.242	4.963	5,61%
Passengers (u)	3.201.737	3.444.491	7,58%	3.444.491	3.201.737	7,58%
Regular line	1.048.890	1.096.515	4,54%	1.096.515	1.048.890	4,54%
Pleasure cruises	2.152.847	2.347.976	9,06%	2.347.976	2.152.847	9,06%

## TRAFFIC INDICATORS

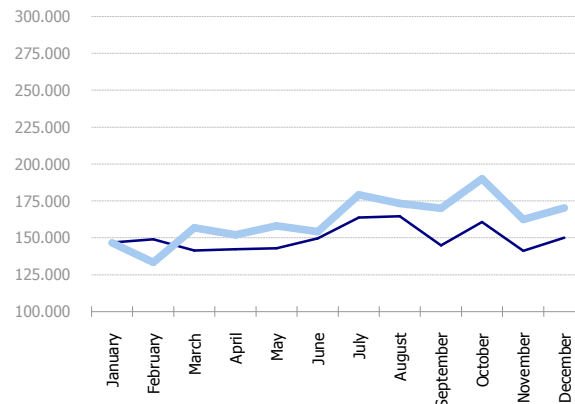
Monthly evolution of traffic	Tonnes				TEU				Passengers			
	2009	2010	Monthly %	Accumulated %	2009	2010	Monthly %	Accumulated %	2009	2010	Monthly %	Accumulated %
January	3.280.598	3.320.837	1,23%	1,23%	146.859	146.588	-0,19%	-0,19%	87.179	83.684	-4,01%	-4,01%
February	3.108.139	3.191.098	2,67%	1,93%	148.867	133.234	-10,50%	-5,38%	74.553	70.500	-5,44%	-4,67%
March	3.402.636	3.410.312	0,23%	1,34%	141.439	156.741	10,82%	-0,14%	145.428	143.143	-1,57%	-3,20%
April	3.417.629	3.348.268	-2,03%	0,47%	142.171	152.070	6,96%	1,60%	270.513	289.458	7,00%	1,58%
May	3.642.587	3.460.512	-5,00%	-0,72%	142.817	157.987	10,62%	3,39%	315.970	363.763	15,13%	6,37%
June	3.323.092	3.662.195	10,20%	1,08%	149.692	154.227	3,03%	3,33%	324.395	383.724	18,29%	9,54%
July	3.916.513	3.973.683	1,46%	1,14%	163.817	179.110	9,34%	4,28%	417.851	451.662	8,09%	9,17%
August	3.654.894	3.567.070	-2,40%	0,68%	164.627	173.197	5,21%	4,40%	525.436	589.982	12,28%	9,93%
September	3.347.365	3.636.703	8,64%	1,53%	144.836	170.053	17,41%	5,80%	371.903	404.815	8,85%	9,77%
October	3.526.482	3.886.908	10,22%	2,42%	160.727	189.877	18,14%	7,12%	333.627	355.291	6,49%	9,39%
November	3.495.634	3.746.131	7,17%	2,85%	141.242	162.426	15,00%	7,80%	224.884	184.580	-17,92%	7,40%
December	3.665.906	3.673.238	0,20%	2,62%	150.065	170.226	13,43%	8,27%	109.998	123.889	12,63%	7,58%

Monthly evolution of traffic.

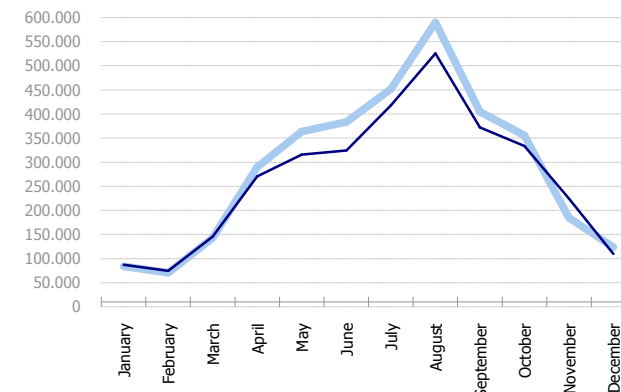
Goods. (Tonnes)



Containers. (TEU)



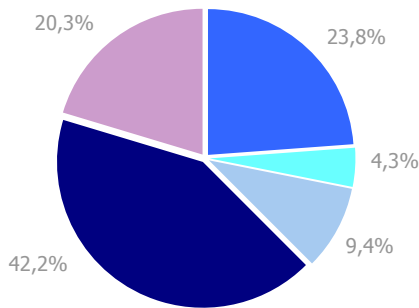
Passengers. (Units)



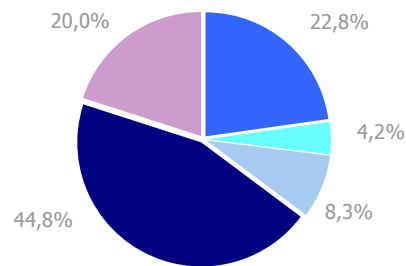
# GOODS TRAFFIC

Mode of packaging and navigation (t)	Monthly accumulated 2009			Monthly accumulated 2010			%
	Domestic	Foreign	Total	Domestic	Foreign	Total	
<b>Hydrocarbons</b>	<b>901.141</b>	<b>9.054.498</b>	<b>9.955.639</b>	<b>953.492</b>	<b>8.805.476</b>	<b>9.758.969</b>	<b>-1,98%</b>
Incoming	847.185	8.707.896	9.555.081	951.784	8.630.821	9.582.605	0,29%
Outgoing	53.956	346.602	400.558	1.709	174.655	176.364	-55,97%
<b>Other liquid bulk</b>	<b>247.553</b>	<b>1.552.658</b>	<b>1.800.211</b>	<b>245.333</b>	<b>1.553.855</b>	<b>1.799.188</b>	<b>-0,06%</b>
Incoming	132.340	1.206.663	1.339.003	139.076	1.149.761	1.288.836	-3,75%
Outgoing	115.212	345.995	461.207	106.257	404.094	510.351	10,66%
<b>Dry bulk</b>	<b>482.595</b>	<b>3.430.585</b>	<b>3.913.180</b>	<b>69.074</b>	<b>3.473.144</b>	<b>3.542.218</b>	<b>-9,48%</b>
Incoming	444.766	2.740.395	3.185.162	59.832	2.607.837	2.667.669	-16,25%
Outgoing	37.829	690.189	728.018	9.242	865.307	874.548	20,13%
<b>Containerized cargo</b>	<b>1.292.567</b>	<b>16.319.614</b>	<b>17.612.181</b>	<b>1.129.749</b>	<b>18.057.700</b>	<b>19.187.449</b>	<b>8,94%</b>
Incoming	306.235	7.831.038	8.137.274	272.327	8.572.644	8.844.971	8,70%
Outgoing	986.331	8.488.575	9.474.907	857.422	9.485.055	10.342.477	9,16%
<b>Non-containerized cargo</b>	<b>3.721.787</b>	<b>4.778.479</b>	<b>8.500.266</b>	<b>3.718.396</b>	<b>4.870.735</b>	<b>8.589.131</b>	<b>1,05%</b>
Incoming	1.322.184	2.137.896	3.460.079	1.316.312	2.193.895	3.510.207	1,45%
Outgoing	2.399.604	2.640.583	5.040.187	2.402.085	2.676.840	5.078.924	0,77%
<b>Total general cargo</b>	<b>5.014.354</b>	<b>21.098.093</b>	<b>26.112.447</b>	<b>4.848.145</b>	<b>22.928.435</b>	<b>27.776.580</b>	<b>6,37%</b>
Incoming	1.628.419	9.968.934	11.597.353	1.588.639	10.766.540	12.355.178	6,53%
Outgoing	3.385.935	11.129.159	14.515.094	3.259.506	12.161.895	15.421.401	6,24%
<b>Total throughput</b>	<b>6.645.643</b>	<b>35.135.833</b>	<b>41.781.476</b>	<b>6.116.045</b>	<b>36.760.909</b>	<b>42.876.954</b>	<b>2,62%</b>
Incoming	3.052.710	22.623.888	25.676.598	2.739.330	23.154.959	25.894.289	0,85%
Outgoing	3.592.932	12.511.945	16.104.877	3.376.714	13.605.951	16.982.665	5,45%
<b>Container traffic (TEU)</b>	<b>206.957</b>	<b>1.590.199</b>	<b>1.797.156</b>	<b>183.222</b>	<b>1.762.510</b>	<b>1.945.733</b>	<b>8,27%</b>
Incoming	97.860	803.516	901.376	85.558	884.797	970.355	7,65%
Outgoing	109.097	786.684	895.781	97.664	877.714	975.378	8,89%

Distribution by mode of packaging 2009.

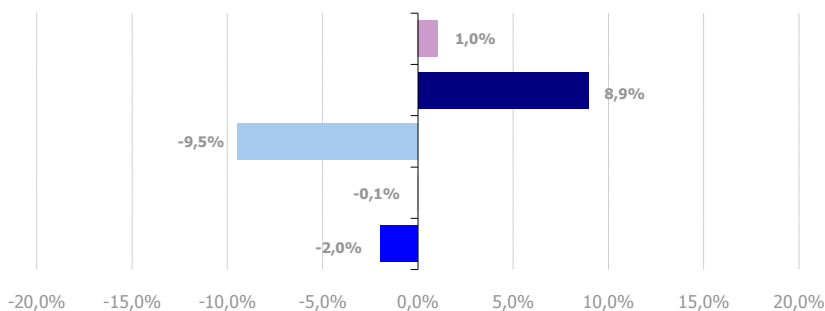


Distribution by mode of packaging 2010.



■ Hydrocarbons ■ Liquid bulk ■ Dry bulk ■ Containerized cargo ■ Non containerized cargo

Annual growth by mode of packaging.



## GOODS TRAFFIC

Goods by classification 4.3.7. (t)	Monthly accumulated		
	2009	2010	%
<b>Total throughput</b>	<b>41.781.476</b>	<b>42.876.954</b>	<b>2,62%</b>
<b>Energy</b>	<b>10.344.523</b>	<b>10.177.431</b>	<b>-1,62%</b>
Crude oil	2.533	840	-66,83%
Fuel oil	705.336	683.462	-3,10%
Diesel oils	2.997.275	2.731.096	-8,88%
Petrol	1.394.415	1.184.285	-15,07%
Other petroleum products	135.630	121.642	-10,31%
Petroleum fuel gasses	181.264	175.961	-2,93%
Coal	152.819	186.066	21,76%
Natural gas	4.775.252	5.094.078	6,68%
<b>Iron and steel</b>	<b>2.151.926</b>	<b>1.825.646</b>	<b>-15,16%</b>
Iron ore	48.057	58.354	21,43%
Scrap metal	756.133	459.792	-39,19%
Iron and steel products	1.347.736	1.307.500	-2,99%
<b>Metallurgy</b>	<b>807.513</b>	<b>793.838</b>	<b>-1,69%</b>
Pyrites and calcinated pyrites	4.505	4.425	-1,78%
Other minerals	534.781	595.159	11,29%
Other metallurgical products	268.227	194.253	-27,58%
<b>Fertilizers</b>	<b>294.614</b>	<b>418.937</b>	<b>42,20%</b>
Phosphates	4.581	2.746	-40,06%
Potashes	237.299	331.024	39,50%
Natural/artificial fertilizers	52.734	85.167	61,50%
<b>Chemicals</b>	<b>4.092.423</b>	<b>4.598.887</b>	<b>12,38%</b>
Chemical products	4.092.423	4.598.887	12,38%
<b>Construction materials</b>	<b>1.500.570</b>	<b>1.243.047</b>	<b>-17,16%</b>
Asphalt	2.290	3.815	66,55%
Cement and clinker	760.824	475.129	-37,55%
Other construction materials	737.455	764.103	3,61%
<b>Agriculture, livestock and food</b>	<b>6.920.998</b>	<b>7.095.202</b>	<b>2,52%</b>
Cereals and flours	755.094	519.683	-31,18%
Soya bean	1.371.875	1.683.426	22,71%
Fruit, vegetables and pulses	522.748	505.198	-3,36%
Wines, beverages, spirits and derivatives	606.457	580.339	-4,31%
Canned goods	109.119	137.822	26,30%
Tobacco, coffee and cocoa	479.133	484.187	1,05%
Oils and fats	975.036	867.390	-11,04%
Other food products	1.269.960	1.476.910	16,30%
Frozen fish	51.849	31.831	-38,61%
Feedstuffs and fodder	779.727	808.416	3,68%
<b>Other cargo</b>	<b>7.623.175</b>	<b>8.017.513</b>	<b>5,17%</b>
Timber	124.450	208.439	67,49%
Common salt	115.308	129.760	12,53%
Paper and pulp	1.487.667	1.475.066	-0,85%
Machinery and spare parts	1.277.204	1.445.865	13,21%
Other cargo by type	4.618.546	4.758.383	3,03%
<b>Special transport</b>	<b>8.045.733</b>	<b>8.706.454</b>	<b>8,21%</b>
Automobiles and parts	916.787	1.191.178	29,93%
Tare of platforms and wagons (ro-ro)	3.507.989	3.606.162	2,80%
Tare of containers	3.620.958	3.909.114	7,96%



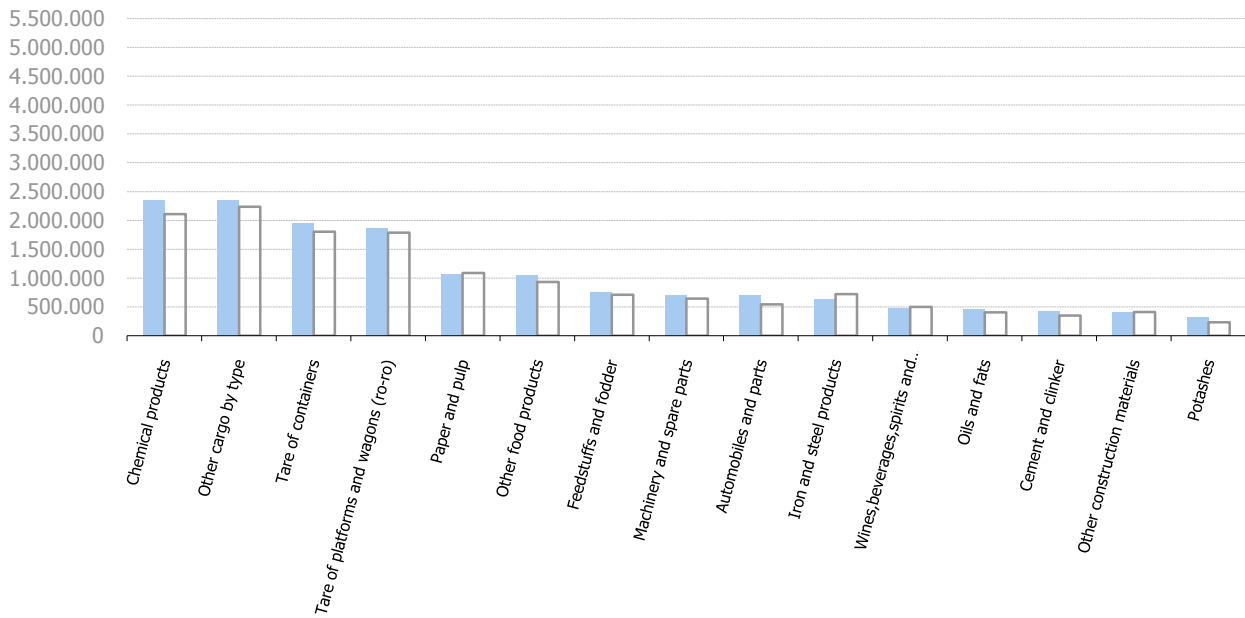
# GOODS TRAFFIC

## Goods ranking by classification 4.3.7. (t)

### Ranking of goods (t)

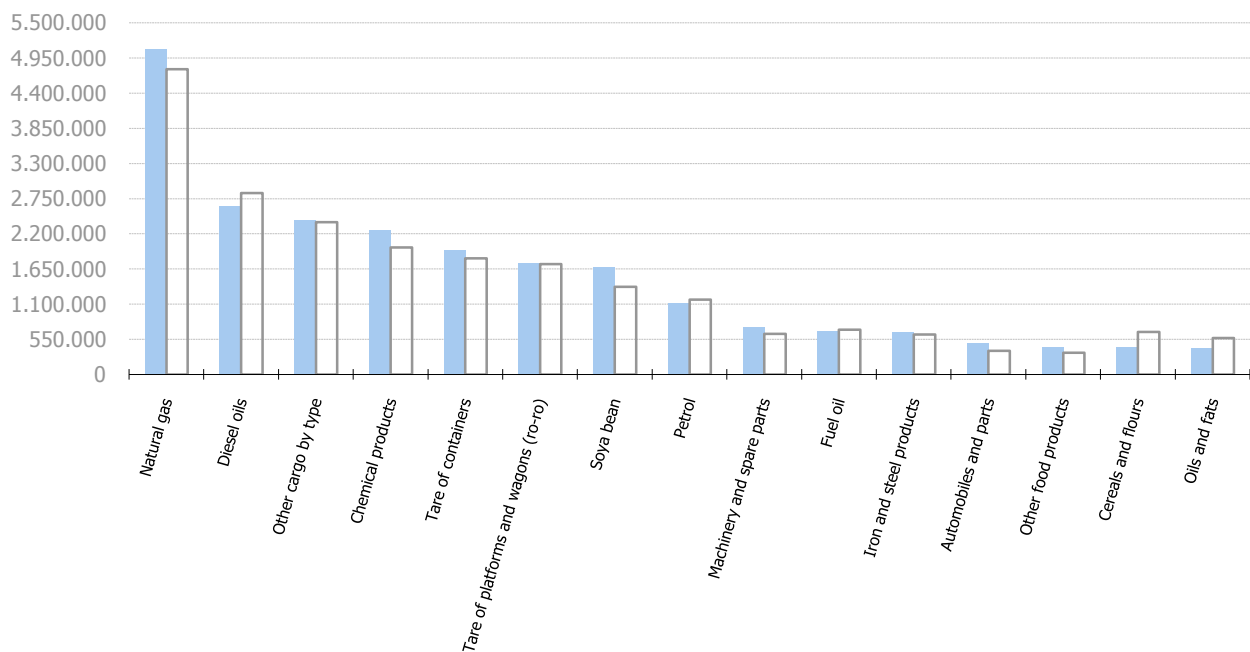
Ranking of loaded goods. (t)

■ 2010 □ 2009



Ranking of unloaded goods. (t)

■ 2010 □ 2009



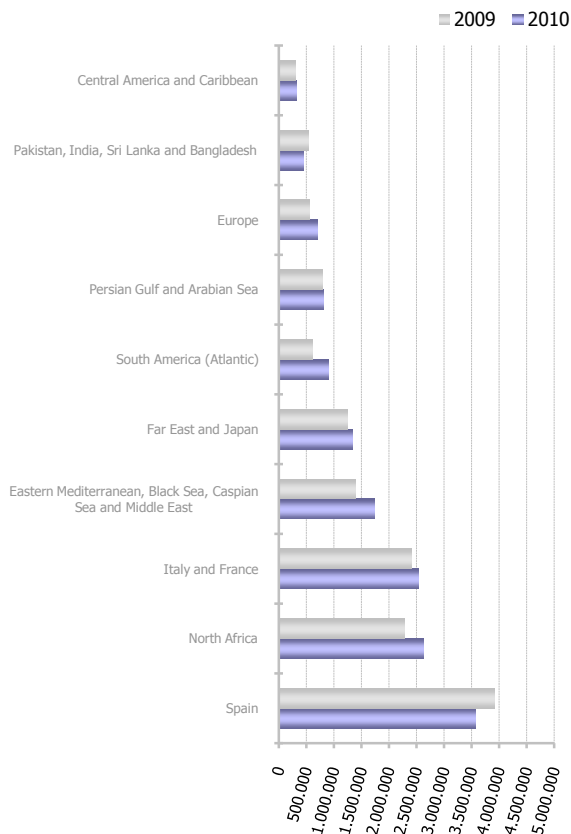
## GOODS TRAFFIC

Goods classification by mode of packaging (t)	Hydrocarbons			Liquid bulk			Dry bulk			Containerized cargo			Non-containerized cargo			Total monthly accumulated		
	2009	2010	%	2009	2010	%	2009	2010	%	2009	2010	%	2009	2010	%	2009	2010	%
<b>Total goods</b>	<b>9.955.639</b>	<b>9.758.969</b>	<b>-2,0%</b>	<b>1.800.211</b>	<b>1.799.188</b>	<b>-0,1%</b>	<b>3.913.180</b>	<b>3.542.218</b>	<b>-9,5%</b>	<b>17.612.181</b>	<b>19.187.449</b>	<b>8,9%</b>	<b>8.500.266</b>	<b>8.589.131</b>	<b>1,0%</b>	<b>41.781.476</b>	<b>42.876.954</b>	<b>2,6%</b>
Crude oil	0	0		0	0		0	0		2.443	840	-65,6%	90	0		2.533	840	-66,8%
Fuel oil	700.967	675.814	-3,6%	0	0		0	0		4.273	7.526	76,1%	96	122	26,6%	705.336	683.462	-3,1%
Diesel oils	2.997.275	2.730.533	-8,9%	0	0		0	0		0	563		0	0		2.997.275	2.731.096	-8,9%
Petrol	1.394.178	1.184.043	-15,1%	0	0		0	0		131	242	85,2%	106	0		1.394.415	1.184.285	-15,1%
Asphalt	0	0		0	0		0	0		1.303	1.263	-3,1%	987	2.552	158,6%	2.290	3.815	66,6%
Other petroleum products	51.204	35.384	-30,9%	15.944	24.384	52,9%	0	0		67.230	61.108	-9,1%	1.252	767	-38,8%	135.630	121.642	-10,3%
Petroleum fuel gasses	21.142	20.160	-4,6%	111.966	112.954	0,9%	0	0		22.717	19.581	-13,8%	25.439	23.266	-8,5%	181.264	175.961	-2,9%
Iron ore	0	0		0	0		0	0		6.575	23.405	256,0%	41.481	34.949	-15,7%	48.057	58.354	21,4%
Pyrites and calcinated pyrites	0	0		0	0		0	0		1.565	1.135	-27,5%	2.940	3.290	11,9%	4.505	4.425	-1,8%
Other minerals	0	0		0	0		57.142	75.526	32,2%	442.219	474.241	7,2%	35.419	45.393	28,2%	534.781	595.159	11,3%
Scrap metal	0	0		0	0		570.029	329.441	-42,2%	159.092	109.242	-31,3%	27.012	21.109	-21,9%	756.133	459.792	-39,2%
Coal	19.969	23.611	18,2%	0	0		102.977	120.368	16,9%	29.339	40.821	39,1%	535	1.266	136,8%	152.819	186.066	21,8%
Iron and steel products	0	0		0	0		0	0		641.040	674.818	5,3%	706.695	632.682	-10,5%	1.347.736	1.307.500	-3,0%
Phosphates	0	0		0	0		0	0		4.342	2.702	-37,8%	239	44	-81,5%	4.581	2.746	-40,1%
Potashes	0	0		0	0		232.370	322.779	38,9%	4.899	8.202	67,4%	31	44	43,8%	237.299	331.024	39,5%
Natural/artificial fertiliser	0	0		4.704	9.116	93,8%	0	4.000		41.288	67.818	64,3%	6.742	4.232	-37,2%	52.734	85.167	61,5%
Chemical products	0	0		925.094	1.031.111	11,5%	65.030	58.498	-10,0%	3.021.445	3.413.437	13,0%	80.855	95.841	18,5%	4.092.423	4.598.887	12,4%
Cement and clinker	0	0		0	0		705.123	404.109	-42,7%	17.667	37.727	113,5%	38.034	33.293	-12,5%	760.824	475.129	-37,6%
Timber	0	0		0	0		0	0		111.808	199.177	78,1%	12.642	9.262	-26,7%	124.450	208.439	67,5%
Other construction materials	0	0		0	0		0	0		650.276	705.981	8,6%	87.179	58.122	-33,3%	737.455	764.103	3,6%
Cereals and flours	0	0		0	0		597.817	345.086	-42,3%	140.644	163.228	16,1%	16.633	11.370	-31,6%	755.094	519.683	-31,2%
Soya bean	0	0		0	0		1.366.347	1.676.577	22,7%	5.104	6.406	25,5%	424	443	4,4%	1.371.875	1.683.426	22,7%
Fruit, vegetables and pulses	0	0		0	0		7.865	5.896	-25,0%	381.123	358.096	-6,0%	133.761	141.206	5,6%	522.748	505.198	-3,4%
Wines, beverages, spirits and derivatives	0	0		3.169	15.370	385,0%	0	0		429.428	408.476	-4,9%	173.860	156.492	-10,0%	606.457	580.339	-4,3%
Common salt	0	0		0	0		92.319	114.375	23,9%	22.291	14.441	-35,2%	698	945	35,2%	115.308	129.760	12,5%
Paper and pulp	0	0		0	0		0	0		1.297.938	1.308.754	0,8%	189.729	166.312	-12,3%	1.487.667	1.475.066	-0,8%
Canned goods	0	0		0	0		0	0		106.291	132.843	25,0%	2.829	4.979	76,0%	109.119	137.822	26,3%
Tobacco, coffee and cocoa	0	0		0	0		0	0		477.850	483.390	1,2%	1.283	797	-37,9%	479.133	484.187	1,1%
Oils and fats	0	0		739.333	590.251	-20,2%	0	0		148.364	151.630	2,2%	87.339	125.509	43,7%	975.036	867.390	-11,0%
Other food products	0	0		0	16.001		0	0		721.229	904.409	25,4%	548.731	556.500	1,4%	1.269.960	1.476.910	16,3%
Machinery and spare parts	0	0		0	0		0	12		1.113.088	1.297.805	16,6%	164.116	148.048	-9,8%	1.277.204	1.445.865	13,2%
Automobiles and parts	0	0		0	0		0	0		302.307	377.726	24,9%	614.480	813.451	32,4%	916.787	1.191.178	29,9%
Frozen fish	0	0		0	0		0	0		49.505	31.386	-36,6%	2.344	445	-81,0%	51.849	31.831	-38,6%
Other cargo by type	0	0		1	0		0	0		2.675.947	2.898.008	8,3%	1.942.598	1.860.375	-4,2%	4.618.546	4.758.383	3,0%
Natural gas	4.770.904	5.089.424	6,7%	0	0		0	0		282	593	110,4%	4.066	4.061	-0,1%	4.775.252	5.094.078	6,7%
Other metallurgical products	0	0		0	0		0	0		255.475	188.511	-26,2%	12.751	5.742	-55,0%	268.227	194.253	-27,6%
Feedstuffs and fodder	0	0		0	0		116.161	85.553	-26,3%	633.402	697.322	10,1%	30.164	25.541	-15,3%	779.727	808.416	3,7%
Tare of platforms and wagons (ro-ro)	0	0		0	0		0	0		2.537	6.565	158,8%	3.505.452	3.599.597	2,7%	3.507.989	3.606.162	2,8%
Tare of containers	0	0		0	0		0	0		3.619.723	3.908.030	8,0%	1.235	1.084	-12,2%	3.620.958	3.909.114	8,0%

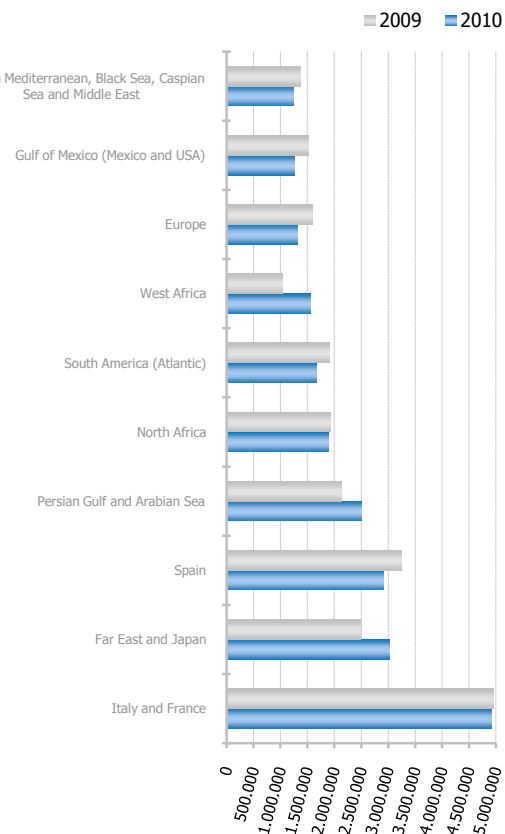
## TRAFFIC BY ORIGIN AND DESTINATION.

Geographical areas (t)	Monthly accumulated		
	2009	2010	%
Italy and France	7.371.031	7.454.909	1,14%
Spain	7.153.222	6.491.874	-9,25%
North Africa	4.213.510	4.529.346	7,50%
Far East and Japan	3.729.535	4.358.091	16,85%
Persian Gulf and Arabian Sea	2.925.292	3.320.611	13,51%
Eastern Mediterranean, Black Sea, Caspian Sea and Middle East	2.771.147	2.987.504	7,81%
South America (Atlantic)	2.517.732	2.575.319	2,29%
Europe	2.150.794	2.021.390	-6,02%
West Africa	1.491.013	1.844.400	23,70%
Gulf of Mexico (Mexico and USA)	1.882.214	1.533.606	-18,52%
Southeast Asia	1.252.798	1.240.756	-0,96%
Pakistan, India, Sri Lanka and Bangladesh	1.223.989	1.185.545	-3,14%
Central America and Caribbean	760.904	779.884	2,49%
Red Sea	514.211	539.319	4,88%
North America (Atlantic)	571.531	473.262	-17,19%
Canada (Atlantic) and Great Lakes	242.585	448.616	84,93%
South America (Pacific)	236.691	359.535	51,90%
South-eastern Africa and Indian Ocean	244.399	301.297	23,28%
Australia, New Zealand and Pacific Islands	311.134	265.206	-14,76%
North America (Pacific)	184.848	129.426	-29,98%
Unknown area (Tare of empty containers)	32.896	37.055	12,64%

Main areas of destination. (t)



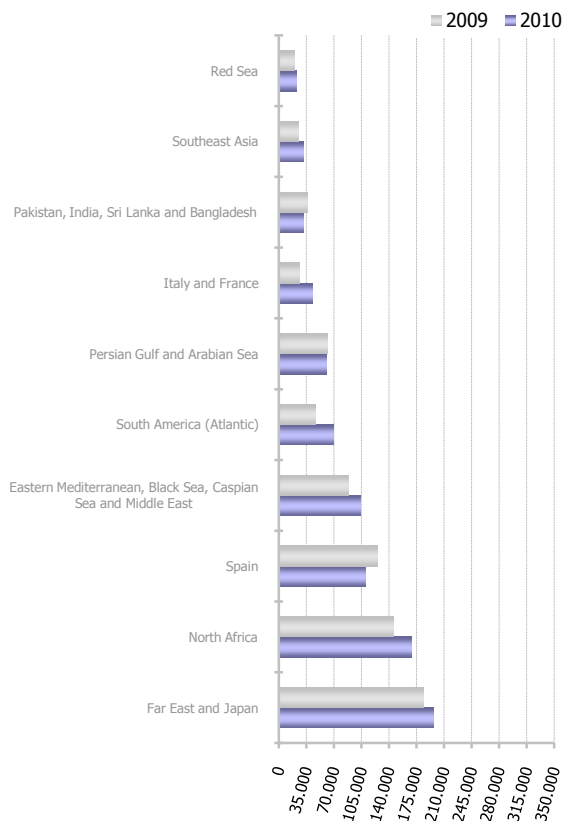
Main areas of origin. (t)



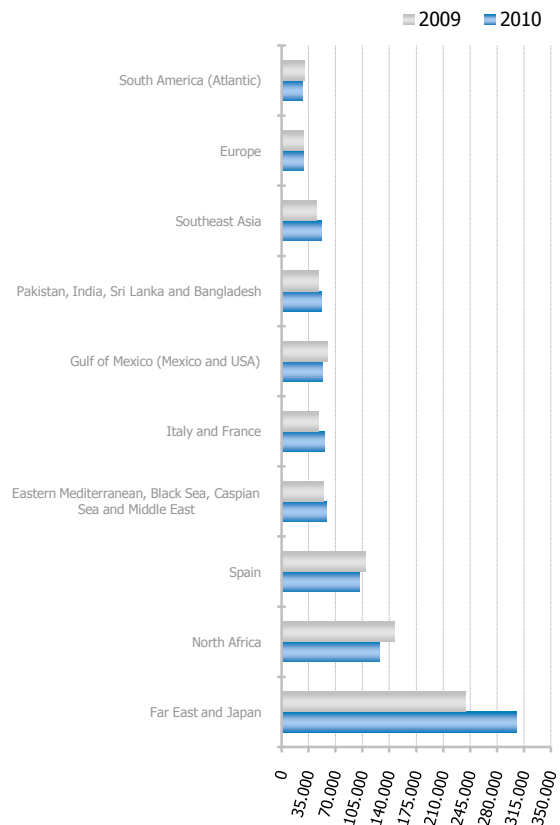
# TRAFFIC BY ORIGIN AND DESTINATION.

Geographical areas (TEU)	Monthly accumulated		
	2009	2010	%
Far East and Japan	423.940	501.677	18,34%
North Africa	292.628	296.045	1,17%
Spain	234.548	211.454	-9,85%
Eastern Mediterranean, Black Sea, Caspian Sea and Middle East	142.480	162.046	13,73%
Italy and France	74.100	99.424	34,18%
South America (Atlantic)	77.303	96.308	24,59%
Pakistan, India, Sri Lanka and Bangladesh	84.173	83.587	-0,70%
Southeast Asia	71.489	82.670	15,64%
Gulf of Mexico (Mexico and USA)	83.153	74.878	-9,95%
Persian Gulf and Arabian Sea	71.832	73.528	2,36%
Europe	46.728	46.690	-0,08%
Central America and Caribbean	29.317	35.126	19,81%
North America (Atlantic)	38.487	34.266	-10,97%
Red Sea	26.470	31.590	19,34%
South-eastern Africa and Indian Ocean	18.710	23.644	26,37%
West Africa	26.124	23.452	-10,23%
South America (Pacific)	16.008	21.432	33,88%
Unknown area (Tare of empty containers)	16.472	18.679	13,40%
Canada (Atlantic) and Great Lakes	8.640	13.603	57,44%
Australia, New Zealand and Pacific Islands	8.395	9.005	7,27%
North America (Pacific)	6.163	6.630	7,57%

Main areas of destination. (TEU)



Main areas of origin. (TEU)



## TRAFFIC BY ORIGIN AND DESTINATION

### Countries by mode of packaging. Load (Transit not included)

Liquid bulk			Dry bulk		
	Tonnes	% a/packaging		Tonnes	% a/packaging
Spain	106.257	24,19%	Algeria	165.942	19,06%
Portugal	97.310	22,15%	Brazil	125.737	14,44%
Italy	70.699	16,09%	Puerto Rico	108.883	12,51%
Morocco	30.216	6,88%	Netherlands	62.939	7,23%
Republic of South Africa	21.440	4,88%	France	61.646	7,08%
Algeria	19.410	4,42%	United Kingdom	55.316	6,35%
Israel	18.649	4,24%	India	50.193	5,77%
United Kingdom	13.000	2,96%	Côte d'Ivoire	40.000	4,59%
Belgium	9.824	2,24%	Italy	37.489	4,31%
Netherlands	8.847	2,01%	Nigeria	35.234	4,05%
Nigeria	8.751	1,99%	Uruguay	28.943	3,32%
France	8.749	1,99%	Ireland	21.486	2,47%
Greece	8.405	1,91%	Greece	15.775	1,81%
Turkey	5.255	1,20%	Portugal	15.486	1,78%
Uruguay	5.001	1,14%	Turkey	11.751	1,35%
Remainder	7.535	1,72%	Remainder	33.732	3,87%
<b>TOTAL</b>	<b>439.351</b>	<b>100%</b>	<b>TOTAL</b>	<b>870.551</b>	<b>100%</b>

Containerized cargo			Non-containerized cargo		
	TEU	% a/packaging		Tonnes	% a/packaging
China	126.042	18,05%	Spain	2.407.128	48,07%
Spain	97.854	14,01%	Italy	2.013.107	40,20%
United Arab Emirates	42.171	6,04%	United Kingdom	65.688	1,31%
Turkey	33.351	4,78%	Morocco	63.171	1,26%
Algeria	26.734	3,83%	Turkey	55.044	1,10%
Brazil	24.426	3,50%	Israel	54.108	1,08%
United States	21.489	3,08%	Netherlands	34.242	0,68%
Morocco	19.096	2,73%	Mexico	29.512	0,59%
Taiwan	19.058	2,73%	Algeria	26.343	0,53%
Singapore	16.676	2,39%	Iran	25.523	0,51%
Saudi Arabia	15.479	2,22%	Tunisia	24.593	0,49%
Mexico	15.086	2,16%	United Arab Emirates	22.957	0,46%
Hong Kong	15.063	2,16%	Greece	22.157	0,44%
Republic of South Africa	14.038	2,01%	United States	21.599	0,43%
India	12.787	1,83%	Egypt	18.788	0,38%
Remainder	198.878	28,48%	Remainder	123.715	2,47%
<b>TOTAL</b>	<b>698.226</b>	<b>100%</b>	<b>TOTAL</b>	<b>5.007.675</b>	<b>100%</b>

## TRAFFIC BY ORIGIN AND DESTINATION

### Countries by mode of packaging. Unload (Transit not included)

Liquid bulk			Dry bulk		
	Tonnes	% a/packaging		Tonnes	% a/packaging
Italy	2.412.960	22,23%	Brazil	1.016.531	38,11%
Qatar	1.909.547	17,59%	United States	353.922	13,27%
Nigeria	1.413.489	13,02%	Canada	252.016	9,45%
Spain	1.095.232	10,09%	Argentina	223.868	8,39%
Algeria	796.690	7,34%	Russian Federation	92.272	3,46%
Egypt	339.610	3,13%	Romania	79.891	2,99%
United States	329.425	3,04%	Turkey	72.531	2,72%
Trinidad and Tobago	288.725	2,66%	Lithuania	63.220	2,37%
France	267.884	2,47%	United Kingdom	60.327	2,26%
Indonesia	247.938	2,28%	Spain	59.832	2,24%
Saudi Arabia	194.203	1,79%	Bulgaria	39.802	1,49%
Kuwait	165.227	1,52%	Poland	35.560	1,33%
Malta	138.325	1,27%	Italy	35.183	1,32%
Netherlands	138.004	1,27%	Serbia and Montenegro	27.515	1,03%
Russian Federation	127.647	1,18%	Hungary	26.824	1,01%
Remainder	988.076	9,10%	Remainder	228.375	8,56%
<b>TOTAL</b>	<b>10.852.981</b>	<b>100%</b>	<b>TOTAL</b>	<b>2.667.669</b>	<b>100%</b>

Containerized cargo			Non-containerized cargo		
	TEU	% a/packaging		Tonnes	% a/packaging
China	190.321	31,23%	Italy	1.749.017	50,88%
Spain	81.469	13,37%	Spain	1.318.433	38,35%
Morocco	21.403	3,51%	Morocco	64.683	1,88%
United States	19.730	3,24%	Japan	54.317	1,58%
Turkey	19.276	3,16%	South Korea	38.528	1,12%
India	18.943	3,11%	Russian Federation	36.118	1,05%
Hong Kong	18.317	3,01%	Tunisia	31.765	0,92%
Algeria	17.158	2,82%	United Kingdom	26.096	0,76%
Japan	17.082	2,80%	Germany	22.643	0,66%
Vietnam	13.970	2,29%	Turkey	15.751	0,46%
Saudi Arabia	12.259	2,01%	France	14.235	0,41%
Italy	11.979	1,97%	India	13.657	0,40%
Brazil	11.747	1,93%	Ukraine	12.741	0,37%
Taiwan	10.637	1,75%	Netherlands	5.954	0,17%
South Korea	9.636	1,58%	Greece	5.462	0,16%
Remainder	135.575	22,24%	Remainder	28.419	0,83%
<b>TOTAL</b>	<b>609.499</b>	<b>100%</b>	<b>TOTAL</b>	<b>3.437.818</b>	<b>100%</b>

## TRAFFIC BY ORIGIN AND DESTINATION

### Total countries by mode of packaging. (Transit not included)

Liquid bulk			Dry bulk		
	Tonnes	% a/packaging		Tonnes	% a/packaging
Italy	2.483.659	21,99%	Brazil	1.142.268	32,28%
Qatar	1.909.547	16,91%	United States	353.922	10,00%
Nigeria	1.422.240	12,59%	Canada	252.016	7,12%
Spain	1.201.489	10,64%	Argentina	223.868	6,33%
Algeria	816.100	7,23%	Algeria	165.942	4,69%
Egypt	339.610	3,01%	United Kingdom	115.643	3,27%
United States	329.425	2,92%	Puerto Rico	108.883	3,08%
Trinidad and Tobago	288.725	2,56%	Russian Federation	92.272	2,61%
France	276.633	2,45%	France	87.931	2,49%
Indonesia	247.938	2,20%	Turkey	84.282	2,38%
Saudi Arabia	194.203	1,72%	Romania	79.891	2,26%
Kuwait	165.227	1,46%	Netherlands	79.514	2,25%
Netherlands	146.851	1,30%	Italy	72.672	2,05%
Malta	138.325	1,22%	Spain	69.074	1,95%
Russian Federation	127.647	1,13%	Lithuania	63.220	1,79%
Remainder	1.204.713	10,67%	Remainder	546.824	15,45%
<b>TOTAL</b>	<b>11.292.332</b>	<b>100%</b>	<b>TOTAL</b>	<b>3.538.221</b>	<b>100%</b>

Containerized cargo			Non-containerized cargo		
	TEU	% a/packaging		Tonnes	% a/packaging
China	316.363	24,19%	Italy	3.762.124	44,55%
Spain	179.323	13,71%	Spain	3.725.561	44,11%
Turkey	52.627	4,02%	Morocco	127.854	1,51%
United Arab Emirates	44.414	3,40%	United Kingdom	91.784	1,09%
Algeria	43.891	3,36%	Turkey	70.795	0,84%
United States	41.219	3,15%	Tunisia	56.357	0,67%
Morocco	40.499	3,10%	Japan	55.497	0,66%
Brazil	36.173	2,77%	Israel	54.193	0,64%
Hong Kong	33.380	2,55%	Russian Federation	42.161	0,50%
India	31.730	2,43%	Netherlands	40.195	0,48%
Taiwan	29.695	2,27%	South Korea	39.169	0,46%
Saudi Arabia	27.738	2,12%	Mexico	29.529	0,35%
Japan	27.540	2,11%	Greece	27.620	0,33%
Singapore	23.520	1,80%	Algeria	26.369	0,31%
Mexico	21.723	1,66%	Iran	25.523	0,30%
Remainder	357.893	27,37%	Remainder	270.764	3,21%
<b>TOTAL</b>	<b>1.307.725</b>	<b>100%</b>	<b>TOTAL</b>	<b>8.445.493</b>	<b>100%</b>

# CONTAINER TRAFFIC

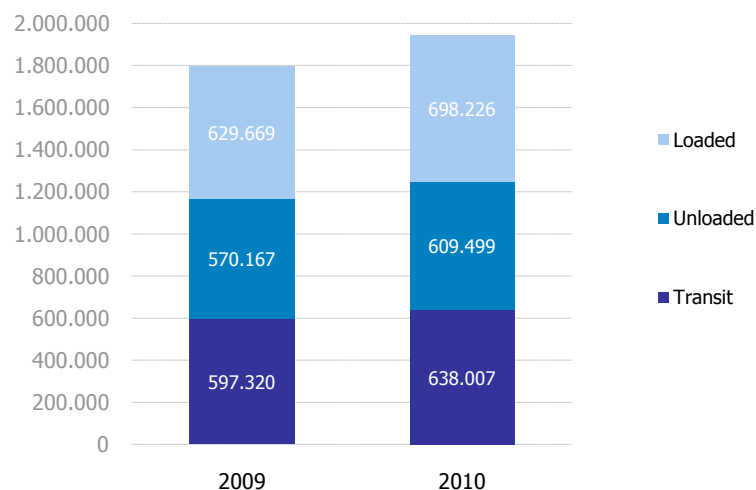
## TEU

Container traffic (TEU)	Monthly accumulated 2009			Monthly accumulated 2010			%
	Domestic	Foreign	Total	Domestic	Foreign	Total	
<b>Total traffic</b>	<b>206.957</b>	<b>1.590.199</b>	<b>1.797.156</b>	<b>183.222</b>	<b>1.762.510</b>	<b>1.945.733</b>	<b>8,27%</b>
Unloaded	97.860	803.516	901.376	85.558	884.797	970.355	7,65%
Loaded	109.097	786.684	895.781	97.664	877.714	975.378	8,89%

Breakdown by navigation and operation (TEU)	Monthly accumulated 2009			Monthly accumulated 2010			%
	Domestic	Foreign	Total	Domestic	Foreign	Total	
<b>Unloaded</b>	<b>108.872</b>	<b>520.796</b>	<b>629.669</b>	<b>97.557</b>	<b>600.669</b>	<b>698.226</b>	<b>10,89%</b>
Full	94.182	371.203	465.385	83.525	450.143	533.668	14,67%
Empty	14.691	149.593	164.284	14.032	150.527	164.559	0,17%
<b>Loaded</b>	<b>94.797</b>	<b>475.370</b>	<b>570.167</b>	<b>81.407</b>	<b>528.092</b>	<b>609.499</b>	<b>6,90%</b>
Full	19.322	376.611	395.932	17.703	438.193	455.896	15,14%
Empty	75.476	98.760	174.235	63.705	89.899	153.604	-11,84%
<b>Transit</b>	<b>3.288</b>	<b>594.033</b>	<b>597.320</b>	<b>4.258</b>	<b>633.749</b>	<b>638.007</b>	<b>6,81%</b>
Full	311	467.650	467.961	60	497.086	497.146	6,24%
Empty	2.977	126.383	129.360	4.198	136.664	140.862	8,89%
<b>Total traffic</b>	<b>206.957</b>	<b>1.590.199</b>	<b>1.797.156</b>	<b>183.222</b>	<b>1.762.510</b>	<b>1.945.733</b>	<b>8,27%</b>
Full	113.814	1.215.464	1.329.278	101.288	1.385.421	1.486.709	11,84%
Empty	93.143	374.735	467.878	81.935	377.089	459.024	-1,89%
% Empty	45,01%	23,57%	<b>26,03%</b>	44,72%	21,39%	<b>23,59%</b>	
% Transit	1,59%	37,36%	<b>33,24%</b>	2,32%	35,96%	<b>32,79%</b>	

General cargo distribution by operation. (TEU )



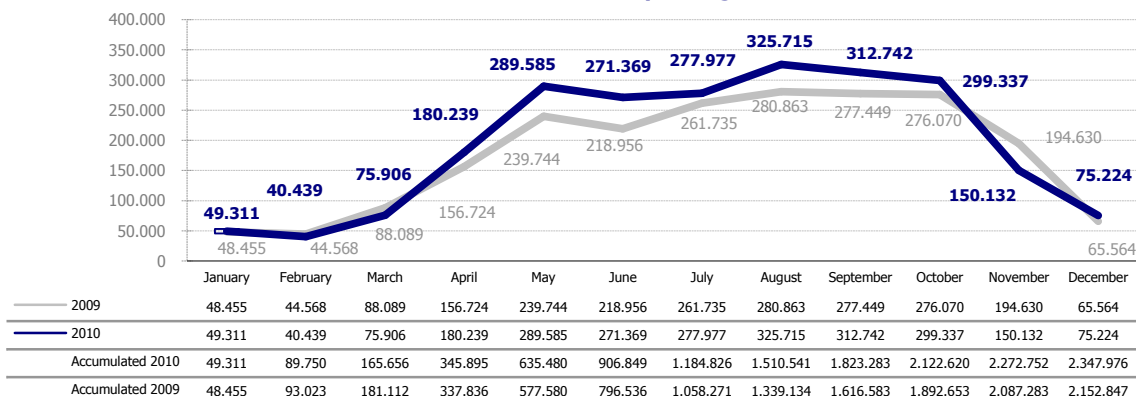


# PASSENGER TRAFFIC

Total passenger traffic (u)		Monthly accumulated		
		2009	2010	%
<b>Total passengers</b>		<b>3.201.737</b>	<b>3.444.491</b>	<b>7,58%</b>
	Embarkation	1.107.420	1.184.165	6,93%
	Disembarkation	1.122.798	1.175.656	4,71%
	Transit	971.519	1.084.670	11,65%
<b>Regular line ferries</b>		<b>1.048.890</b>	<b>1.096.515</b>	<b>4,54%</b>
	Embarkation	513.996	551.722	7,34%
	Disembarkation	534.894	544.793	1,85%
<b>Domestic</b>		579.697	584.024	0,75%
	Embarkation	292.280	298.426	2,10%
	Disembarkation	287.417	285.598	-0,63%
<b>European Union</b>		402.991	392.283	-2,66%
	Embarkation	191.952	192.153	0,10%
	Disembarkation	211.039	200.130	-5,17%
<b>Other ferries</b>		66.202	120.208	81,58%
	Embarkation	29.764	61.143	105,43%
	Disembarkation	36.438	59.065	62,10%
<b>Pleasure cruises</b>		<b>2.152.847</b>	<b>2.347.976</b>	<b>9,06%</b>
	Embarkation	593.424	632.443	6,58%
	Disembarkation	587.904	630.863	7,31%
	Transit	971.519	1.084.670	11,65%

Total passenger calls. (u)		Monthly accumulated		
		2009	2010	%
<b>Total number of calls</b>		<b>3.511</b>	<b>3.344</b>	<b>-4,76%</b>
	<b>Regular Line ferries</b>	2.712	2.493	-8,08%
	<b>Pleasure cruises</b>	799	851	6,51%

Evolution of cruise passenger traffic.

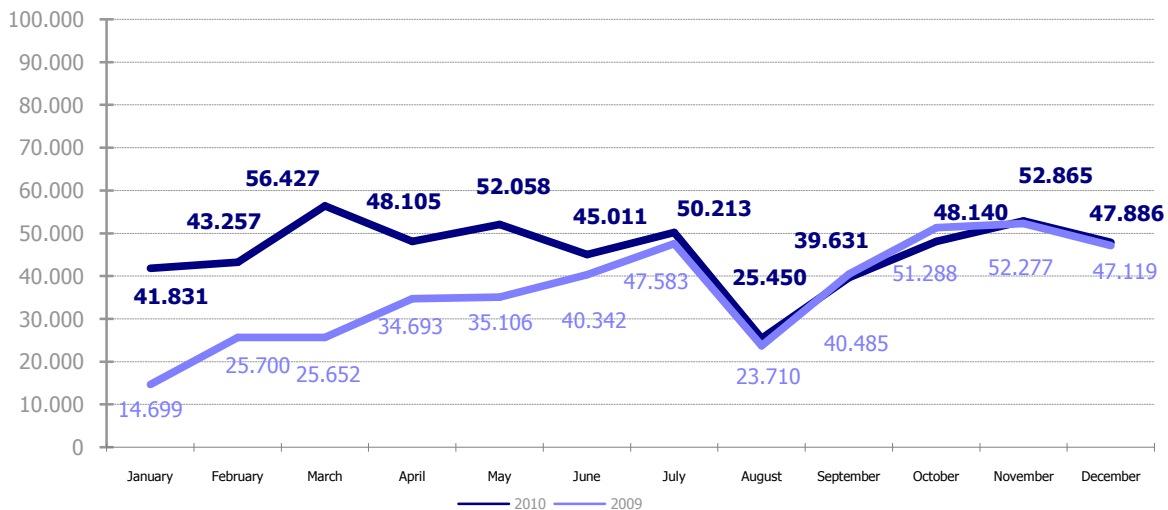


## AUTOMOBILE TRAFFIC

Total automobile traffic (u)	Monthly accumulated		
	2009	2010	%
<b>Automobile traffic by navigation and operation.</b>	<b>438.654</b>	<b>550.874</b>	<b>25,58%</b>
<b>Domestic</b>	<b>65.765</b>	<b>61.947</b>	<b>-5,81%</b>
Loaded	43.168	47.816	10,77%
Unloaded	22.597	14.126	-37,49%
Transit	0	5	-
<b>Foreign</b>	<b>372.889</b>	<b>488.927</b>	<b>31,12%</b>
Loaded	201.634	278.179	37,96%
Unloaded	94.352	124.441	31,89%
Transit	76.903	86.307	12,23%

Monthly automobile traffic (u)	Monthly		Accumulated		%	
	2009	2010	2009	2010	Monthly	Accumulated
January	14.699	41.831	14.699	41.831	184,58%	184,58%
February	25.700	43.257	40.399	85.088	68,32%	110,62%
March	25.652	56.427	66.051	141.515	119,97%	114,25%
April	34.693	48.105	100.744	189.620	38,66%	88,22%
May	35.106	52.058	135.850	241.678	48,29%	77,90%
June	40.342	45.011	176.192	286.689	11,57%	62,71%
July	47.583	50.213	223.775	336.902	5,53%	50,55%
August	23.710	25.450	247.485	362.352	7,34%	46,41%
September	40.485	39.631	287.970	401.983	-2,11%	39,59%
October	51.288	48.140	339.258	450.123	-6,14%	32,68%
November	52.277	52.865	391.535	502.988	1,12%	28,47%
December	47.119	47.886	438.654	550.874	1,63%	25,58%

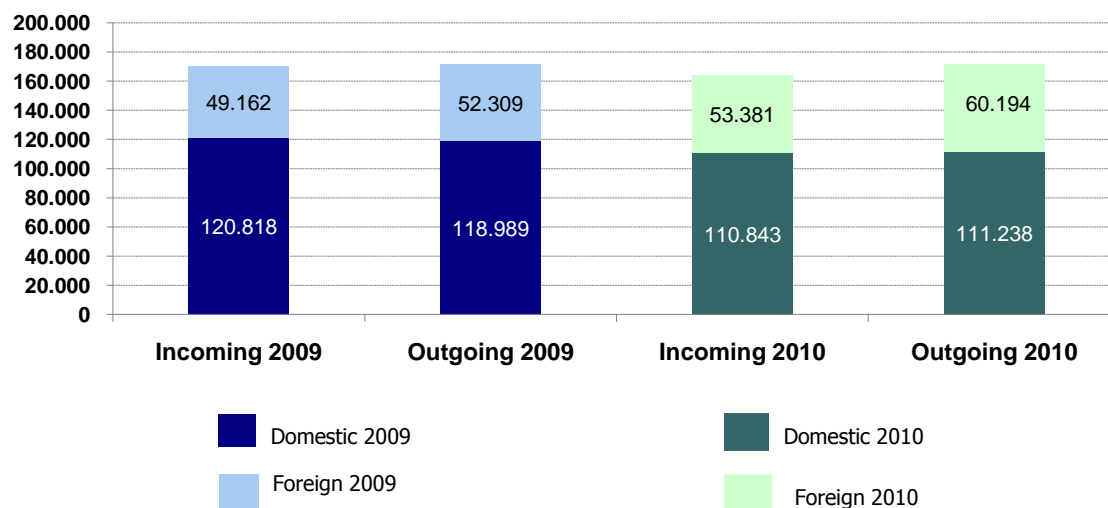
Evolution of monthly automobile traffic.



## INTERMODAL TRANSPORT

UTI * (u)	Monthly accumulated 2009			Monthly accumulated 2010			%
	Domestic	Foreign	Total	Domestic	Foreign	Total	
<b>Total UTI by direction</b>	<b>239.807</b>	<b>101.471</b>	<b>341.278</b>	<b>222.080</b>	<b>113.575</b>	<b>335.655</b>	<b>-1,65%</b>
Incoming	120.818	49.162	169.980	110.843	53.381	164.223	-3,39%
Outgoing	118.989	52.309	171.298	111.238	60.194	171.432	0,08%
Traffic of UTI by navigation and operation	Monthly accumulated 2009			Monthly accumulated 2010			%
	Domestic	Foreign	Total	Domestic	Foreign	Total	
<b>Total</b>	<b>239.807</b>	<b>101.471</b>	<b>341.278</b>	<b>222.080</b>	<b>113.575</b>	<b>335.655</b>	<b>-1,65%</b>
Full	142.582	94.015	236.597	134.415	104.929	239.344	1,16%
Empty	97.225	7.456	104.681	87.665	8.646	96.311	-8,00%
<b>Loaded</b>	<b>118.965</b>	<b>52.309</b>	<b>171.274</b>	<b>111.227</b>	<b>60.194</b>	<b>171.421</b>	<b>0,09%</b>
Full	114.852	50.362	165.214	107.828	57.639	165.467	0,15%
Empty	4.113	1.947	6.060	3.399	2.555	5.954	-1,75%
<b>Unloaded</b>	<b>120.794</b>	<b>49.161</b>	<b>169.955</b>	<b>110.833</b>	<b>53.381</b>	<b>164.213</b>	<b>-3,38%</b>
Full	27.685	43.652	71.337	26.567	47.290	73.856	3,53%
Empty	93.109	5.509	98.618	84.266	6.091	90.357	-8,38%
<b>Transit</b>	<b>48</b>	<b>1</b>	<b>49</b>	<b>21</b>	<b>0</b>	<b>21</b>	<b>-57,14%</b>
Full	45	1	46	21	0	21	-54,35%
Empty	3	0	3	0	0	0	-

### UTI



UTI\*: All those means of unitization, self-propelled or otherwise, that are directly or indirectly used as a means of land transport (e.g. trailers, platforms, trucks, freezer trucks, etc.) are considered as UTI. Containers are not considered to be included.

## VESSELS TRAFFIC

Vessel traffic	Monthly accumulated		
	2009	2010	%
Number of calls	8.418	8.180	-2,83%
Tonnage	245.290.654	256.079.490	4,40%
Average tonnes	29.139	31.306	7,44%

Type of vessels	Monthly accumulated					
	2009		2010		%	
	Calls	GT	Calls	GT	Calls	GT
<b>Total</b>	<b>8.418</b>	<b>245.290.654</b>	<b>8.180</b>	<b>256.079.490</b>	<b>-2,83%</b>	<b>4,40%</b>
Car-carrier	269	9.594.345	449	15.391.915	66,91%	60,43%
Càrrega (LO-LO)	736	3.573.090	665	3.103.364	-9,65%	-13,15%
Frigorífics	4	45.068	33	573.850	725,00%	1173,30%
Granelers	128	2.207.754	87	2.037.217	-32,03%	-7,72%
Passatge	799	59.601.095	851	64.297.599	6,51%	7,88%
Petroliers	12	323.412	11	490.868	-8,33%	51,78%
Portacontenidors	2.386	70.214.007	2.274	70.810.615	-4,69%	0,85%
RO-RO	448	10.145.207	412	11.507.441	-8,04%	13,43%
Tancs	924	17.009.981	905	16.766.335	-2,06%	-1,43%
Transbordadors	2.712	72.576.695	2.493	71.100.286	-8,08%	-2,03%

Type of vessels (Monthly accumulated 2010)	Domestic		Foreign	
	Calls	GT	Calls	GT
<b>Total</b>	<b>2.272</b>	<b>46.939.706</b>	<b>5.908</b>	<b>209.139.784</b>
Car-carrier	43	509.653	406	14.882.262
Càrrega (LO-LO)	22	149.271	643	2.954.093
Frigorífics	0	0	33	573.850
Granelers	6	48.744	81	1.988.473
Passatge	18	555.134	833	63.742.465
Petroliers	0	0	11	490.868
Portacontenidors	246	3.278.203	2.028	67.532.412
RO-RO	163	3.580.155	249	7.927.286
Tancs	125	1.030.552	780	15.735.783
Transbordadors	1.649	37.787.994	844	33.312.292

Distribution by type of vessel.

