

**Port of Barcelona traffic statistics**

**Accumulated data December 2009**

**Statistics Service**

## Index

---

### Traffic indicators

Total traffic	3
Breakdown of traffic. I	4
Breakdown of traffic. II	5
Monthly evolution of traffic	6
Forecast for annual traffic	7

### Goods traffic

Mode of packaging and navigation	8
4.3.7 goods classification	9
Goods ranking	10
Goods classification by mode of packaging	11

### Traffic by origin and destination

Geographical areas (Tonnes)	12
Geographical areas (TEU)	13
Countries by mode of packaging. Load	14
Countries by mode of packaging. Unloading	15
Total countries by mode of packaging	16

### Container traffic

Container traffic (TEU)	17
-------------------------	----

### Passenger traffic

Passenger traffic	18
-------------------	----

### Automobile traffic

Automobile traffic	19
--------------------	----

### Intermodal transport

UTI (Intermodal transport unit)	20
---------------------------------	----

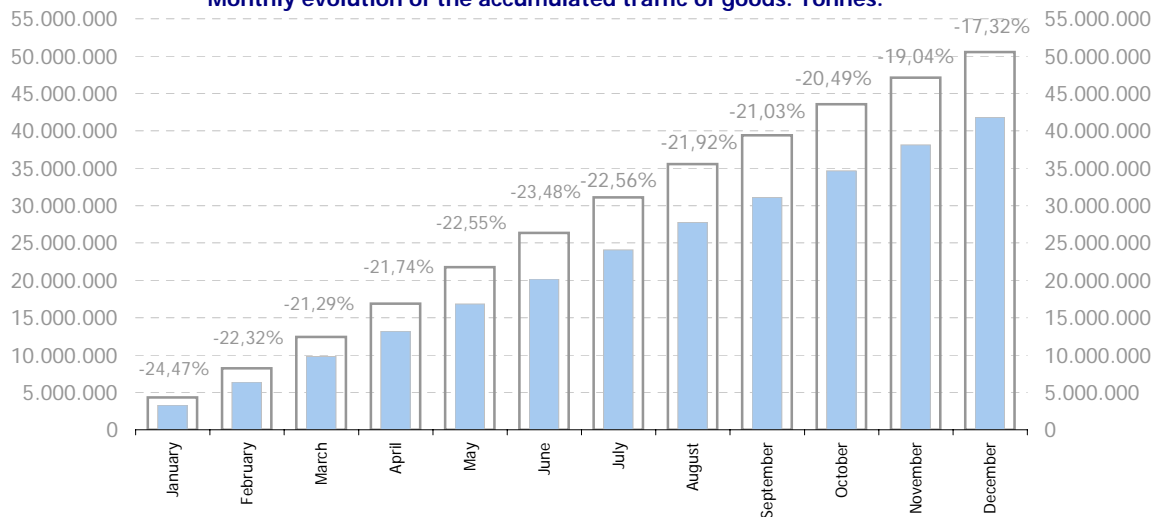
### Vessel traffic

Vessel traffic	21
----------------	----

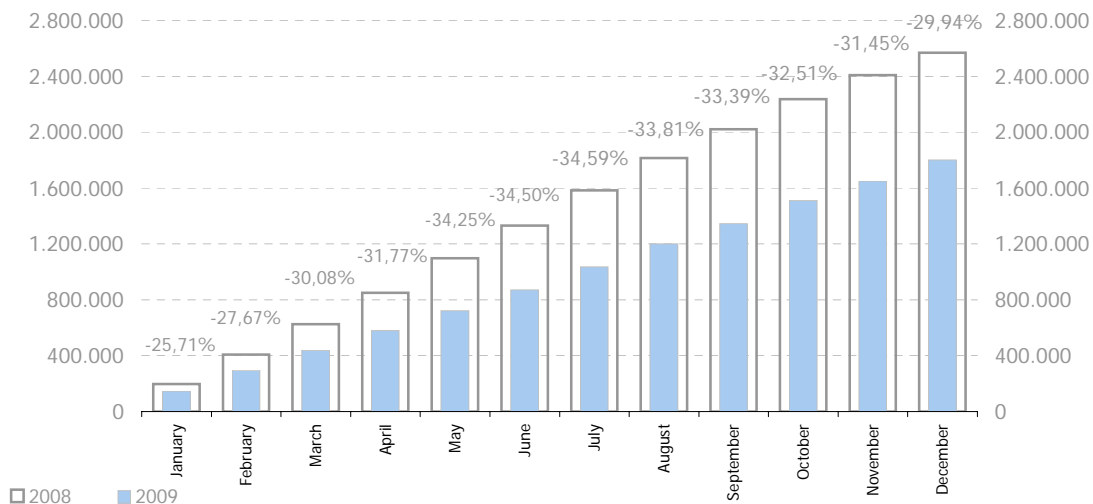
# TRAFFIC INDICATORS

Total traffic	Monthly accumulated			Last 12 months	Total traffic 2008	% 12 months-2008
	2008	2009	%			
<b>Total throughput (t)</b>	<b>50.551.673</b>	<b>41.793.734</b>	<b>-17,32%</b>	<b>41.793.734</b>	<b>50.551.673</b>	<b>-17,32%</b>
Food supplying	1.261.416	1.184.676	-6,08%	1.184.676	1.261.416	-6,08%
Fishing	2.698	2.364	-12,39%	2.364	2.698	-12,39%
<b>TOTAL TRAFFIC (t)</b>	<b>51.815.787</b>	<b>42.980.774</b>	<b>-17,05%</b>	<b>42.980.774</b>	<b>51.815.787</b>	<b>-17,05%</b>
<b>TEU</b>	<b>2.569.477</b>	<b>1.800.213</b>	<b>-29,94%</b>	<b>1.800.213</b>	<b>2.569.477</b>	<b>-29,94%</b>
<b>Vessels (units)</b>	<b>9.581</b>	<b>8.418</b>	<b>-12,14%</b>	<b>8.418</b>	<b>9.581</b>	<b>-12,14%</b>
<b>Passengers (units)</b>	<b>3.225.866</b>	<b>3.201.696</b>	<b>-0,75%</b>	<b>3.201.696</b>	<b>3.225.866</b>	<b>-0,75%</b>
<b>Automobiles (units)</b>	<b>716.393</b>	<b>438.597</b>	<b>-38,78%</b>	<b>438.597</b>	<b>716.393</b>	<b>-38,78%</b>

Monthly evolution of the accumulated traffic of goods. Tonnes.



Monthly evolution of the accumulated traffic of goods. TEU.



## TRAFFIC INDICATORS

Breakdown of traffic. I	Monthly accumulated			% of total 2009
	2008	2009	%	
<b>Goods indicators by type of packaging (t)</b>	<b>50.551.673</b>	<b>41.793.734</b>	<b>-17,32%</b>	<b>100,00%</b>
<b>Liquid bulk</b>	<b>12.103.841</b>	<b>11.755.823</b>	<b>-2,88%</b>	<b>28,13%</b>
<b>Hydrocarbons</b>	<b>9.957.544</b>	<b>9.956.061</b>	<b>-0,01%</b>	<b>23,82%</b>
Natural gas	5.077.295	4.770.904	-6,03%	11,42%
Diesel oils	2.820.072	2.997.450	6,29%	7,17%
Petrol	1.133.766	1.393.826	22,94%	3,34%
Fuel oil	871.516	701.567	-19,50%	1,68%
Other petroleum products	30.978	51.204	65,29%	0,12%
Remainder	23.916	41.111	71,89%	0,10%
<b>Other liquid bulk</b>	<b>2.146.297</b>	<b>1.799.762</b>	<b>-16,15%</b>	<b>4,31%</b>
Chemical products	869.243	924.546	6,36%	2,21%
Oils and fats	641.010	739.432	15,35%	1,77%
Petroleum fuel gasses	60.365	111.966	85,48%	0,27%
Other petroleum products	14.102	15.944	13,06%	0,04%
Natural/artificial fertilizer	8.402	4.704	-44,01%	0,01%
Remainder	553.175	3.170	-99,43%	0,01%
<b>Dry bulk</b>	<b>3.506.530</b>	<b>3.921.099</b>	<b>11,82%</b>	<b>9,38%</b>
<b>Special installation</b>	<b>2.856.154</b>	<b>3.022.810</b>	<b>5,83%</b>	<b>7,23%</b>
Soya bean	1.368.364	1.366.458	-0,14%	3,27%
Cement and clinker	656.310	705.123	7,44%	1,69%
Cereals and flours	542.352	597.983	10,26%	1,43%
Potashes	281.864	232.370	-17,56%	0,56%
Feedstuffs and fodder	7.265	113.012	1455,61%	0,27%
Remainder	0	7.865	-	0,02%
<b>Without special installation</b>	<b>650.376</b>	<b>898.288</b>	<b>38,12%</b>	<b>2,15%</b>
Scrap metal	256.271	570.072	122,45%	1,36%
Coal	198.921	102.977	-48,23%	0,25%
Common salt	26.484	92.319	248,58%	0,22%
Chemical products	21.172	65.030	207,15%	0,16%
Other minerals	122.220	64.741	-47,03%	0,15%
Remainder	25.308	3.149	-87,56%	0,01%
<b>General cargo</b>	<b>34.941.301</b>	<b>26.116.812</b>	<b>-25,26%</b>	<b>62,49%</b>
<b>Containerized</b>	<b>25.158.893</b>	<b>17.625.493</b>	<b>-29,94%</b>	<b>42,17%</b>
Tares of containers (O/D+Transit)	5.185.922	3.625.695	-30,09%	8,68%
Chemical products	3.362.228	3.029.579	-9,89%	7,25%
Other cargo by type	4.071.240	2.649.438	-34,92%	6,34%
Paper and pulp	1.628.689	1.298.428	-20,28%	3,11%
Machinery and spare parts	1.882.089	1.113.298	-40,85%	2,66%
Remainder	9.028.724	5.909.054	-34,55%	14,14%
<b>Non-containerized</b>	<b>9.782.409</b>	<b>8.491.320</b>	<b>-13,20%</b>	<b>20,32%</b>
Tare of platform and wagons (Ro-ro)	3.927.522	3.504.561	-10,77%	8,39%
Other cargo by type	2.286.603	1.929.468	-15,62%	4,62%
Iron and steel products	790.549	698.877	-11,60%	1,67%
Automobiles and parts	1.030.416	614.423	-40,37%	1,47%
Other food products	544.269	548.577	0,79%	1,31%
Remainder	1.203.050	1.195.412	-0,63%	2,86%

## TRAFFIC INDICATORS

Breakdown of traffic. II	Monthly accumulated			Last 12 months	Total traffic 2008	% 12 months-2008
	2008	2009	%			

### Goods indicators by navigation and operation.

Navigation (t)	50.551.673	41.793.734	-17,32%	41.793.734	50.551.673	-17,32%
Domestic	8.073.175	6.642.287	-17,72%	6.642.287	8.073.175	-17,72%
Foreign	42.478.498	35.151.447	-17,25%	35.151.447	42.478.498	-17,25%
Operation (t)	50.551.673	41.793.734	-17,32%	41.793.734	50.551.673	-17,32%
Loaded	13.579.448	12.171.848	-10,37%	12.171.848	13.579.448	-10,37%
Unloaded	24.793.369	22.069.684	-10,99%	22.069.684	24.793.369	-10,99%
Transit	12.178.856	7.552.202	-37,99%	7.552.202	12.178.856	-37,99%

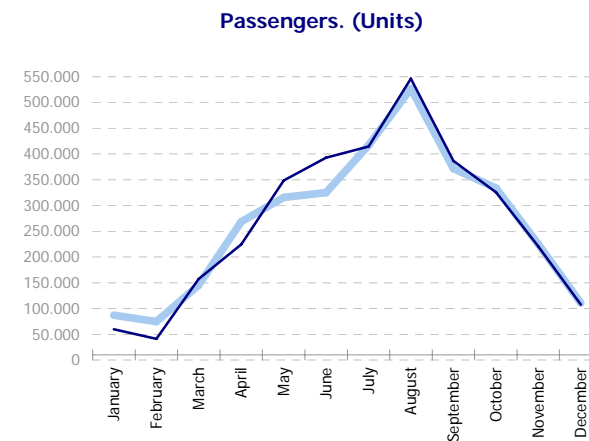
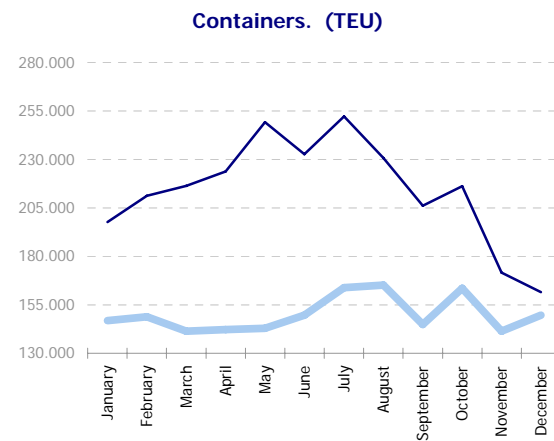
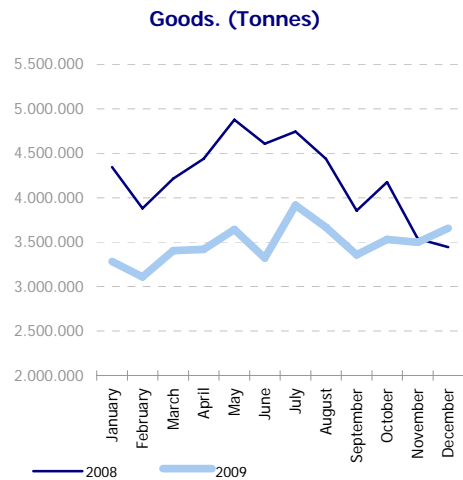
### Goods indicators by main units.

Containers (TEU)	2.569.477	1.800.213	-29,94%	1.800.213	2.569.477	-29,94%
TEU O/D	1.610.252	1.193.978	-25,85%	1.193.978	1.610.252	-25,85%
TEU transit	959.225	606.235	-36,80%	606.235	959.225	-36,80%
Containerized tonnes	25.158.893	17.625.493	-29,94%	17.625.493	25.158.893	-29,94%
Level of containerization	72,00%	67,49%	-6,27%	67,49%	72,00%	-6,27%
Automobiles (u)	716.393	438.597	-38,78%	438.597	716.393	-38,78%
Loaded	382.013	244.806	-35,92%	244.806	382.013	-35,92%
Unloaded	140.189	116.950	-16,58%	116.950	140.189	-16,58%
Transit	194.191	76.841	-60,43%	76.841	194.191	-60,43%
Vessels (u)	9.581	8.418	-12,14%	8.418	9.581	-12,14%
Number of calls	9.581	8.418	-12,14%	8.418	9.581	-12,14%
GT	258.670.508	245.272.018	-5,18%	245.272.018	258.670.508	-5,18%
Average tonnes by vessel	5.276	4.965	-5,90%	4.965	5.276	-5,90%
Passengers (u)	3.225.866	3.201.696	-0,75%	3.201.696	3.225.866	-0,75%
Regular line	1.151.976	1.050.231	-8,83%	1.050.231	1.151.976	-8,83%
Pleasure cruises	2.073.890	2.151.465	3,74%	2.151.465	2.073.890	3,74%

## TRAFFIC INDICATORS

Monthly evolution of traffic	Tonnes				TEU				Passengers			
	2008	2009	Monthly %	Accumulated %	2008	2009	Monthly %	Accumulated %	2008	2009	Monthly %	Accumulated %
January	4.343.202	3.280.597	-24,47%	-24,47%	197.670	146.858	-25,71%	-25,71%	59.724	87.179	45,97%	45,97%
February	3.881.160	3.108.133	-19,92%	-22,32%	211.216	148.868	-29,52%	-27,67%	40.915	74.553	82,21%	60,71%
March	4.216.033	3.402.576	-19,29%	-21,29%	216.350	141.435	-34,63%	-30,08%	157.517	145.466	-7,65%	19,00%
April	4.437.055	3.417.580	-22,98%	-21,74%	223.790	142.170	-36,47%	-31,77%	224.533	268.513	19,59%	19,27%
May	4.878.381	3.641.297	-25,36%	-22,55%	249.216	142.809	-42,70%	-34,25%	348.910	315.970	-9,44%	7,22%
June	4.607.254	3.322.427	-27,89%	-23,48%	232.767	149.658	-35,71%	-34,50%	392.514	324.781	-17,26%	-0,63%
July	4.745.097	3.916.186	-17,47%	-22,56%	252.318	163.832	-35,07%	-34,59%	414.751	417.117	0,57%	-0,32%
August	4.436.109	3.665.418	-17,37%	-21,92%	230.695	165.138	-28,42%	-33,81%	546.472	527.256	-3,52%	-1,12%
September	3.853.250	3.356.803	-12,88%	-21,03%	206.152	144.942	-29,69%	-33,39%	386.634	371.903	-3,81%	-1,53%
October	4.173.691	3.531.507	-15,39%	-20,49%	216.250	163.558	-24,37%	-32,51%	325.951	333.555	2,33%	-1,09%
November	3.536.573	3.496.261	-1,14%	-19,04%	171.563	141.349	-17,61%	-31,45%	220.432	224.884	2,02%	-0,87%
December	3.443.869	3.654.949	6,13%	-17,32%	161.494	149.599	-7,37%	-29,94%	107.513	110.519	2,80%	-0,75%

Monthly evolution of traffic.



# TRAFFIC INDICATORS

## Forecast for annual traffic 2009

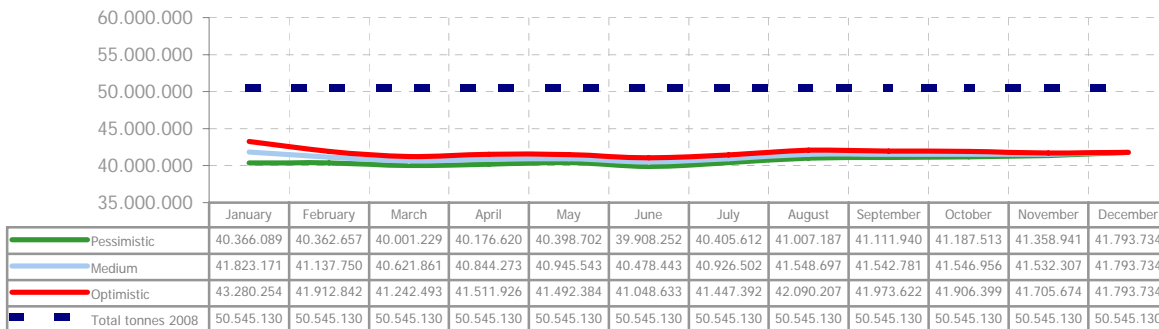
A forecast is presented for year-end 2009, with three different scenarios.

The forecast is updated each month and is based on the behaviour of historical traffic and probable adjustments

- The pessimistic scenario has a probability of 75% of being exceeded.
- The medium scenario has the same probability of being exceeded as of not being exceeded.
- The optimistic scenario has a probability of 75% of not being exceeded.

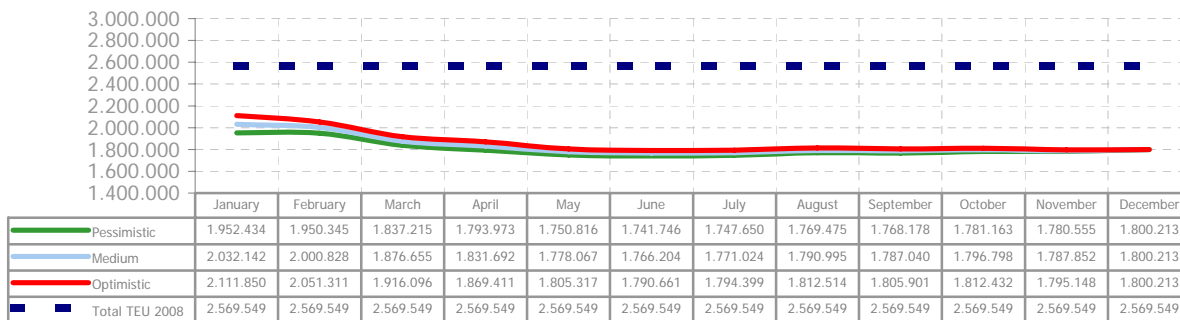
## Tonnes 2009

Forecast of tonnes for year 2009 according to scenario.



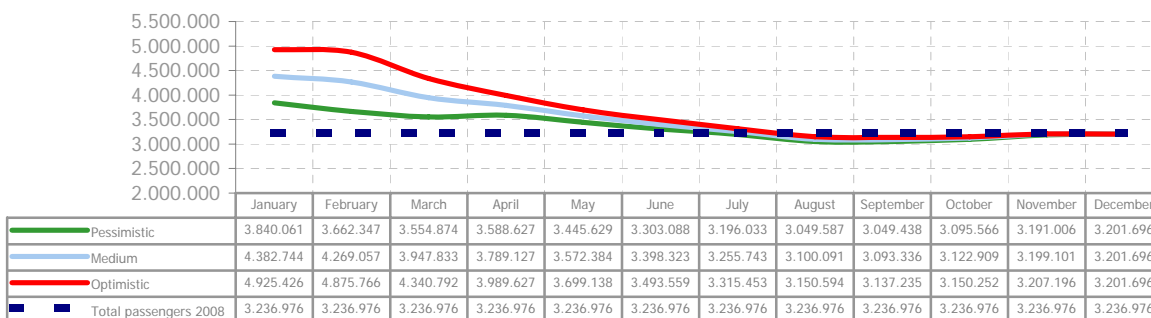
## TEU 2009

Forecast of TEU for year 2009 according to scenario.



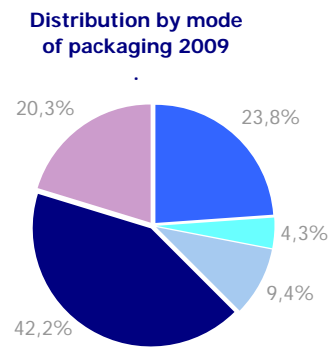
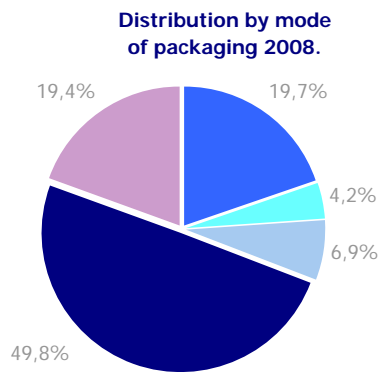
## Passengers 2009

Forecast of passengers for year 2009 according to scenario.



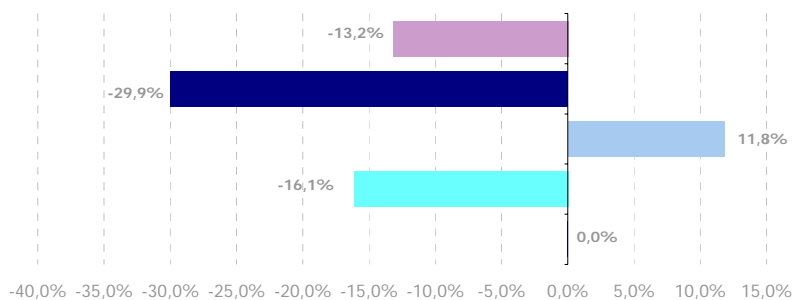
# GOODS TRAFFIC

Mode of packaging and navigation (t)	Monthly accumulated 2008			Monthly accumulated 2009			%
	Domestic	Foreign	Total	Domestic	Foreign	Total	
<b>Hydrocarbons</b>	<b>1.135.677</b>	<b>8.821.867</b>	<b>9.957.544</b>	<b>900.788</b>	<b>9.055.273</b>	<b>9.956.061</b>	<b>-0,01%</b>
Incoming	1.032.591	8.609.811	9.642.402	846.832	8.708.071	9.554.903	-0,91%
Outgoing	103.086	212.056	315.142	53.956	347.202	401.158	27,29%
<b>Other liquid bulk</b>	<b>506.495</b>	<b>1.639.802</b>	<b>2.146.297</b>	<b>247.905</b>	<b>1.551.857</b>	<b>1.799.762</b>	<b>-16,15%</b>
Incoming	458.441	1.387.110	1.845.551	132.693	1.206.663	1.339.356	-27,43%
Outgoing	48.054	252.692	300.746	115.212	345.194	460.406	53,09%
<b>Dry bulk</b>	<b>559.712</b>	<b>2.946.818</b>	<b>3.506.530</b>	<b>482.599</b>	<b>3.438.499</b>	<b>3.921.099</b>	<b>11,82%</b>
Incoming	517.081	2.478.618	2.995.699	444.770	2.748.310	3.193.081	6,59%
Outgoing	42.631	468.201	510.832	37.829	690.189	728.018	42,52%
<b>Containerized cargo</b>	<b>1.672.983</b>	<b>23.485.909</b>	<b>25.158.893</b>	<b>1.290.341</b>	<b>16.335.152</b>	<b>17.625.493</b>	<b>-29,94%</b>
Incoming	419.574	11.719.821	12.139.395	305.416	7.837.406	8.142.823	-32,92%
Outgoing	1.253.409	11.766.088	13.019.498	984.924	8.497.746	9.482.670	-27,17%
<b>Non-containerized cargo</b>	<b>4.198.308</b>	<b>5.584.101</b>	<b>9.782.409</b>	<b>3.720.653</b>	<b>4.770.667</b>	<b>8.491.320</b>	<b>-13,20%</b>
Incoming	1.448.216	2.690.381	4.138.597	1.321.746	2.130.441	3.452.187	-16,59%
Outgoing	2.750.091	2.893.720	5.643.812	2.398.908	2.640.225	5.039.133	-10,71%
<b>Total general cargo</b>	<b>5.871.291</b>	<b>29.070.011</b>	<b>34.941.301</b>	<b>5.010.994</b>	<b>21.105.818</b>	<b>26.116.812</b>	<b>-25,26%</b>
Incoming	1.867.790	14.410.202	16.277.992	1.627.162	9.967.847	11.595.009	-28,77%
Outgoing	4.003.501	14.659.809	18.663.309	3.383.832	11.137.971	14.521.803	-22,19%
<b>Total throughput</b>	<b>8.073.175</b>	<b>42.478.498</b>	<b>50.551.673</b>	<b>6.642.287</b>	<b>35.151.447</b>	<b>41.793.734</b>	<b>-17,32%</b>
Incoming	3.875.903	26.885.740	30.761.643	3.051.457	22.630.891	25.682.349	-16,51%
Outgoing	4.197.272	15.592.757	19.790.029	3.590.829	12.520.556	16.111.385	-18,59%
<b>Container traffic (TEU)</b>	<b>270.935</b>	<b>2.298.542</b>	<b>2.569.477</b>	<b>206.281</b>	<b>1.593.932</b>	<b>1.800.213</b>	<b>-29,94%</b>
Incoming	138.024	1.147.144	1.285.168	97.419	806.592	904.011	-29,66%
Outgoing	132.911	1.151.398	1.284.309	108.862	787.341	896.203	-30,22%



■ Hydrocarbons ■ Liquid bulk ■ Dry bulk ■ Containerized cargo ■ Non containerized cargo

**Annual growth by mode of packaging.**





## GOODS TRAFFIC

Goods by classification 4.3.7. (t)	Monthly accumulated		
	2008	2009	%
<b>Total throughput</b>	<b>50.551.673</b>	<b>41.793.734</b>	<b>-17,32%</b>
<b>Energy</b>	<b>10.406.735</b>	<b>10.344.973</b>	<b>-0,59%</b>
Crude oil	972	2.533	160,48%
Fuel oil	882.136	705.936	-19,97%
Diesel oils	2.820.201	2.997.450	6,28%
Petrol	1.134.363	1.394.063	22,89%
Other petroleum products	106.457	135.630	27,40%
Petroleum fuel gasses	134.959	181.271	34,32%
Coal	241.317	152.839	-36,66%
Natural gas	5.086.331	4.775.252	-6,12%
<b>Iron and steel</b>	<b>2.064.605</b>	<b>2.145.473</b>	<b>3,92%</b>
Iron ore	3.107	48.204	1451,56%
Scrap metal	423.506	757.982	78,98%
Iron and steel products	1.637.992	1.339.287	-18,24%
<b>Metallurgy</b>	<b>1.335.510</b>	<b>810.399</b>	<b>-39,32%</b>
Pyrites and calcinated pyrites	2.659	4.505	69,44%
Other minerals	991.546	540.346	-45,50%
Other metallurgical products	341.305	265.548	-22,20%
<b>Fertilizers</b>	<b>399.232</b>	<b>294.606</b>	<b>-26,21%</b>
Phosphates	4.812	4.581	-4,80%
Potashes	295.502	237.299	-19,70%
Natural/artificial fertilizers	98.918	52.725	-46,70%
<b>Chemicals</b>	<b>4.360.998</b>	<b>4.100.046</b>	<b>-5,98%</b>
Chemical products	4.360.998	4.100.046	-5,98%
<b>Construction materials</b>	<b>1.866.962</b>	<b>1.500.281</b>	<b>-19,64%</b>
Asphalt	572	2.290	300,20%
Cement and clinker	743.523	760.807	2,32%
Other construction materials	1.122.867	737.183	-34,35%
<b>Agriculture, livestock and food</b>	<b>8.921.411</b>	<b>6.922.138</b>	<b>-22,41%</b>
Cereals and flours	813.536	755.249	-7,16%
Soya bean	1.378.482	1.371.986	-0,47%
Fruit, vegetables and pulses	694.918	522.663	-24,79%
Wines, beverages, spirits and derivatives	1.530.686	606.161	-60,40%
Canned goods	256.084	109.005	-57,43%
Tobacco, coffee and cocoa	722.570	478.723	-33,75%
Oils and fats	906.537	975.110	7,56%
Other food products	1.859.922	1.269.905	-31,72%
Frozen fish	85.813	51.861	-39,56%
Feedstuffs and fodder	672.863	781.475	16,14%
<b>Other cargo</b>	<b>10.554.903</b>	<b>7.624.590</b>	<b>-27,76%</b>
Timber	268.202	124.436	-53,60%
Common salt	64.740	115.308	78,11%
Paper and pulp	1.761.844	1.488.107	-15,54%
Machinery and spare parts	2.047.872	1.277.400	-37,62%
Other cargo by type	6.412.245	4.619.339	-27,96%
<b>Special transport</b>	<b>10.641.316</b>	<b>8.051.228</b>	<b>-24,34%</b>
Automobiles and parts	1.522.417	917.198	-39,75%
Tare of platforms and wagons (ro-ro)	3.932.836	3.507.100	-10,83%
Tare of containers	5.186.063	3.626.930	-30,06%

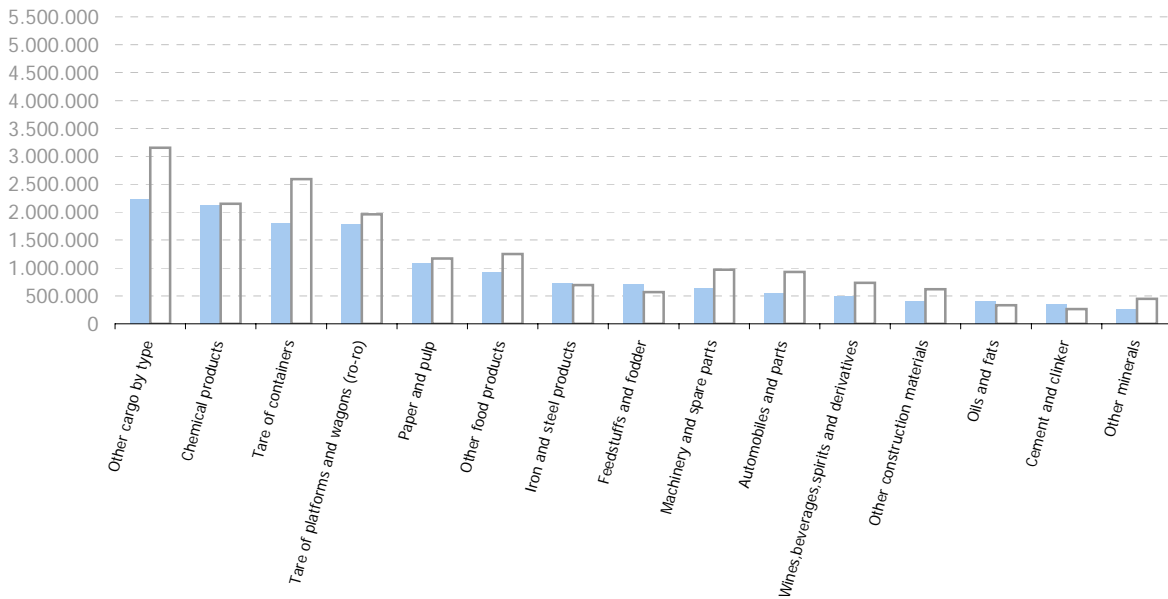
# GOODS TRAFFIC

## Goods ranking by classification 4.3.7. (t)

### Ranking of goods (t)

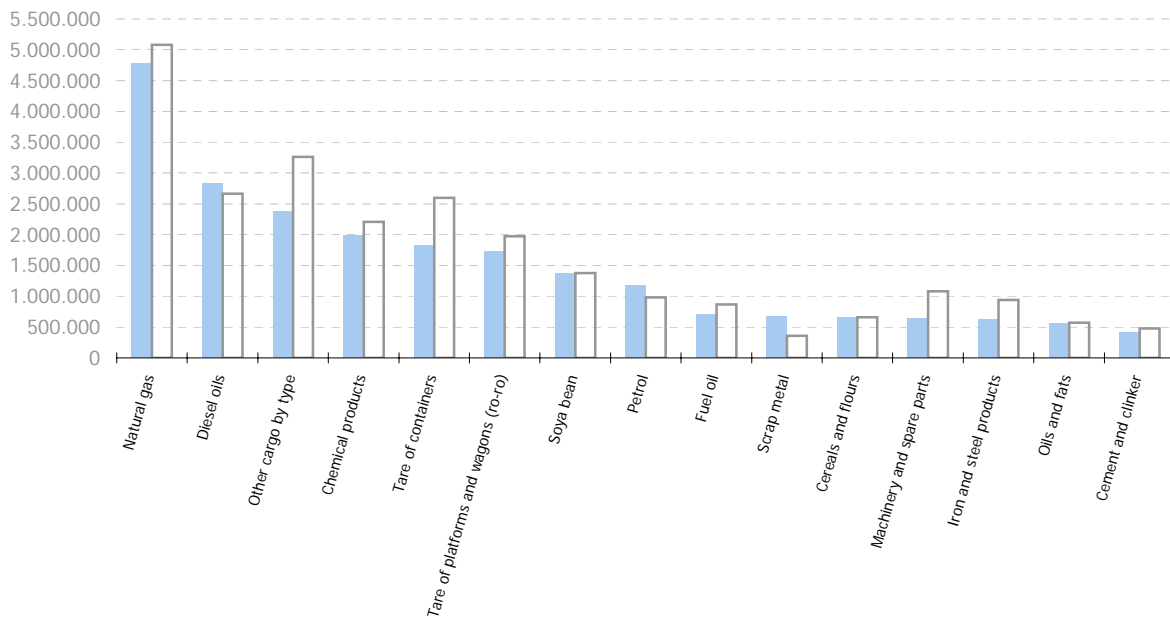
Ranking of loaded goods. (t)

■ 2009 □ 2008



Ranking of unloaded goods. (t)

■ 2009 □ 2008



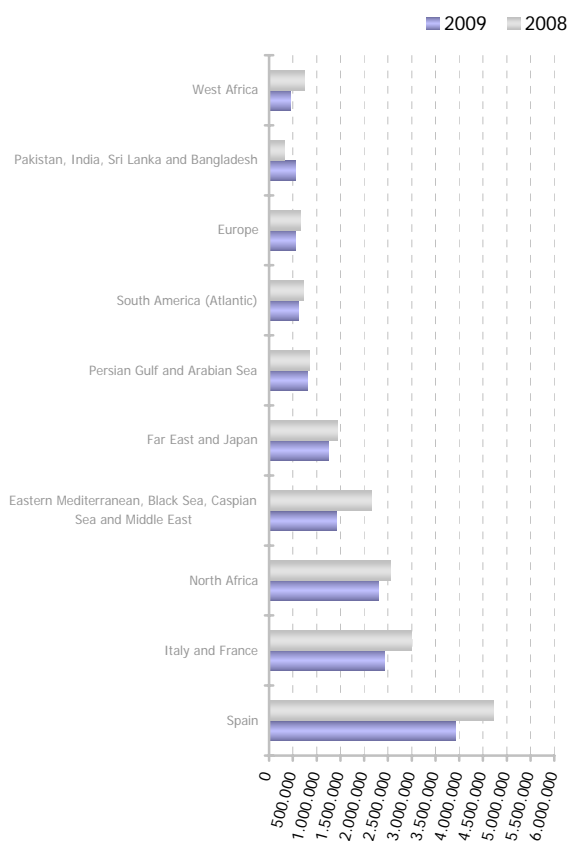
## GOODS TRAFFIC

Goods classification by mode of packaging (t)	Hydrocarbons			Liquid bulk			Dry bulk			Containerized cargo			Non-containerized cargo			Total monthly accumulated		
	2008	2009	%	2008	2009	%	2008	2009	%	2008	2009	%	2008	2009	%	2008	2009	%
<b>Total goods</b>	<b>9.957.544</b>	<b>9.956.061</b>	<b>0,0%</b>	<b>2.146.297</b>	<b>1.799.762</b>	<b>-16,1%</b>	<b>3.506.530</b>	<b>3.921.099</b>	<b>11,8%</b>	<b>25.158.893</b>	<b>17.625.493</b>	<b>-29,9%</b>	<b>9.782.409</b>	<b>8.491.320</b>	<b>-13,2%</b>	<b>50.551.673</b>	<b>41.793.734</b>	<b>-17,3%</b>
Crude oil	0	0		120	0	-100,0%	0	0		773	2.443	216,2%	80	90	12,4%	972	2.533	160,5%
Fuel oil	871.516	701.567	-19,5%	0	0		0	0		10.362	4.273	-58,8%	258	96	-62,8%	882.136	705.936	-20,0%
Diesel oils	2.820.072	2.997.450	6,3%	0	0		0	0		129	0	-100,0%	0	0		2.820.201	2.997.450	6,3%
Petrol	1.133.766	1.393.826	22,9%	0	0		0	0		368	131	-64,5%	228	106	-53,6%	1.134.363	1.394.063	22,9%
Asphalt	0	0		0	0		0	0		200	1.303	550,7%	372	987	165,3%	572	2.290	300,2%
Other petroleum products	30.978	51.204	65,3%	14.102	15.944	13,1%	0	0		59.516	67.230	13,0%	1.861	1.252	-32,7%	106.457	135.630	27,4%
Petroleum fuel gasses	23.916	21.142	-11,6%	60.365	111.966	85,5%	0	0		25.005	22.725	-9,1%	25.673	25.439	-0,9%	134.959	181.271	34,3%
Iron ore	0	0		0	0		0	0		2.816	6.575	133,5%	291	41.629	14230,0%	3.107	48.204	1451,6%
Pyrites and calcinated pyrites	0	0		0	0		0	0		2.644	1.565	-40,8%	15	2.940	19500,0%	2.659	4.505	69,4%
Other minerals	0	0		0	0		122.220	64.741	-47,0%	806.662	440.185	-45,4%	62.664	35.419	-43,5%	991.546	540.346	-45,5%
Scrap metal	0	0		0	0		256.271	570.072	122,4%	142.639	160.898	12,8%	24.597	27.012	9,8%	423.506	757.982	79,0%
Coal	0	19.969		0	0		198.921	102.977	-48,2%	41.314	29.358	-28,9%	1.082	535	-50,6%	241.317	152.839	-36,7%
Iron and steel products	0	0		0	0		1.992	0	-100,0%	845.452	640.410	-24,3%	790.549	698.877	-11,6%	1.637.992	1.339.287	-18,2%
Phosphates	0	0		0	0		0	0		4.530	4.342	-4,1%	282	239	-15,2%	4.812	4.581	-4,8%
Potashes	0	0		0	0		281.864	232.370	-17,6%	13.589	4.899	-64,0%	49	31	-37,6%	295.502	237.299	-19,7%
Natural/artificial fertiliser	0	0		8.402	4.704	-44,0%	1.866	0	-100,0%	76.977	41.288	-46,4%	11.673	6.733	-42,3%	98.918	52.725	-46,7%
Chemical products	0	0		869.243	924.546	6,4%	21.172	65.030	207,1%	3.362.228	3.029.579	-9,9%	108.355	80.891	-25,3%	4.360.998	4.100.046	-6,0%
Cement and clinker	0	0		0	0		656.310	705.123	7,4%	35.726	17.667	-50,5%	51.487	38.017	-26,2%	743.523	760.807	2,3%
Timber	0	0		0	0		0	0		247.517	111.798	-54,8%	20.686	12.639	-38,9%	268.202	124.436	-53,6%
Other construction materials	0	0		0	0		0	0		968.684	650.029	-32,9%	154.183	87.154	-43,5%	1.122.867	737.183	-34,3%
Cereals and flours	0	0		0	0		542.352	597.983	10,3%	250.935	140.633	-44,0%	20.249	16.633	-17,9%	813.536	755.249	-7,2%
Soya bean	0	0		0	0		1.368.364	1.366.458	-0,1%	9.475	5.104	-46,1%	644	424	-34,1%	1.378.482	1.371.986	-0,5%
Fruit, vegetables and pulses	0	0		0	0		0	7.865		565.449	381.119	-32,6%	129.470	133.679	3,3%	694.918	522.663	-24,8%
Wines, beverages, spirits and derivatives	0	0		533.832	3.169	-99,4%	0	0		827.429	429.132	-48,1%	169.426	173.860	2,6%	1.530.686	606.161	-60,4%
Common salt	0	0		0	0		26.484	92.319	248,6%	37.544	22.291	-40,6%	712	698	-2,0%	64.740	115.308	78,1%
Paper and pulp	0	0		0	0		0	0		1.628.689	1.298.428	-20,3%	133.154	189.679	42,5%	1.761.844	1.488.107	-15,5%
Canned goods	0	0		85	0	-100,0%	0	0		252.007	106.176	-57,9%	3.992	2.829	-29,1%	256.084	109.005	-57,4%
Tobacco, coffee and cocoa	0	0		0	0		0	0		720.774	477.440	-33,8%	1.796	1.283	-28,6%	722.570	478.723	-33,7%
Oils and fats	0	0		641.010	739.432	15,4%	0	0		206.334	148.340	-28,1%	59.194	87.339	47,8%	906.537	975.110	7,6%
Other food products	0	0		19.119	0	-100,0%	0	0		1.296.535	721.328	-44,4%	544.269	548.577	0,8%	1.859.922	1.269.905	-31,7%
Machinery and spare parts	0	0		0	0		0	0		1.882.089	1.113.298	-40,8%	165.782	164.102	-1,0%	2.047.872	1.277.400	-37,6%
Automobiles and parts	0	0		0	0		0	0		492.000	302.774	-38,5%	1.030.416	614.423	-40,4%	1.522.417	917.198	-39,8%
Frozen fish	0	0		0	0		0	0		76.306	49.518	-35,1%	9.507	2.344	-75,3%	85.813	51.861	-39,6%
Other cargo by type	0	0		20	1	-96,0%	0	0		4.120.616	2.676.742	-35,0%	2.291.609	1.942.596	-15,2%	6.412.245	4.619.339	-28,0%
Natural gas	5.077.295	4.770.904	-6,0%	0	0		0	0		382	282	-26,2%	8.653	4.066	-53,0%	5.086.331	4.775.252	-6,1%
Other metallurgical products	0	0		0	0		0	0		329.816	252.806	-23,3%	11.489	12.742	10,9%	341.305	265.548	-22,2%
Feedstuffs and fodder	0	0		0	0		28.715	116.161	304,5%	624.149	635.150	1,8%	19.999	30.164	50,8%	672.863	781.475	16,1%
Tare of platforms and wagons (ro-ro)	0	0		0	0		0	0		5.314	2.539	-52,2%	3.927.522	3.504.561	-10,8%	3.932.836	3.507.100	-10,8%
Tare of containers	0	0		0	0		0	0		5.185.922	3.625.695	-30,1%	141	1.235	776,5%	5.186.063	3.626.930	-30,1%

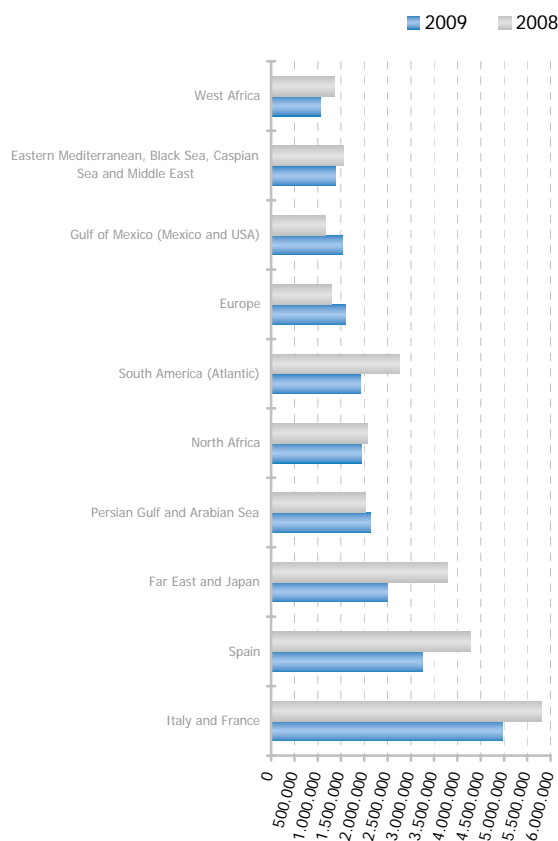
## TRAFFIC BY ORIGIN AND DESTINATION.

Geographical areas (t)	Monthly accumulated		
	2008	2009	%
Italy and France	8.798.135	7.371.785	-16,21%
Spain	8.991.574	7.149.743	-20,48%
North Africa	4.613.248	4.219.897	-8,53%
Far East and Japan	5.219.143	3.728.801	-28,56%
Persian Gulf and Arabian Sea	2.864.052	2.931.784	2,36%
Eastern Mediterranean, Black Sea, Caspian Sea and Middle East	3.701.889	2.779.334	-24,92%
South America (Atlantic)	3.473.707	2.517.154	-27,54%
Europe	1.965.082	2.150.003	9,41%
Gulf of Mexico (Mexico and USA)	1.539.457	1.882.221	22,27%
West Africa	2.109.278	1.490.823	-29,32%
Southeast Asia	1.685.789	1.253.394	-25,65%
Pakistan, India, Sri Lanka and Bangladesh	1.166.906	1.224.191	4,91%
Central America and Caribbean	922.578	760.829	-17,53%
North America (Atlantic)	1.081.619	571.518	-47,16%
Red Sea	515.963	509.437	-1,26%
Australia, New Zealand and Pacific Islands	307.055	311.109	1,32%
South-eastern Africa and Indian Ocean	319.659	244.606	-23,48%
Canada (Atlantic) and Great Lakes	500.108	242.703	-51,47%
South America (Pacific)	364.527	236.662	-35,08%
North America (Pacific)	222.680	184.843	-16,99%
Unknown area (Tare of empty containers)	189.221	32.896	-82,62%

Main areas of destination. (t)



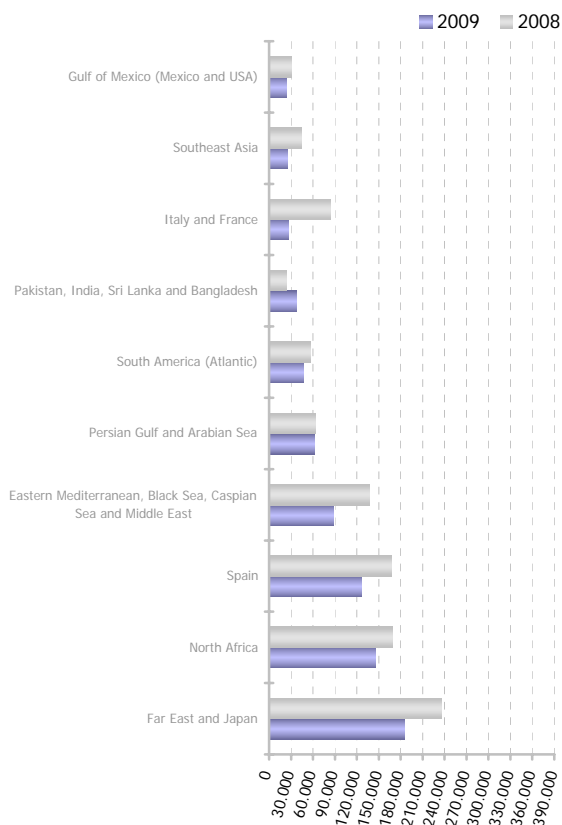
Main areas of origin. (t)



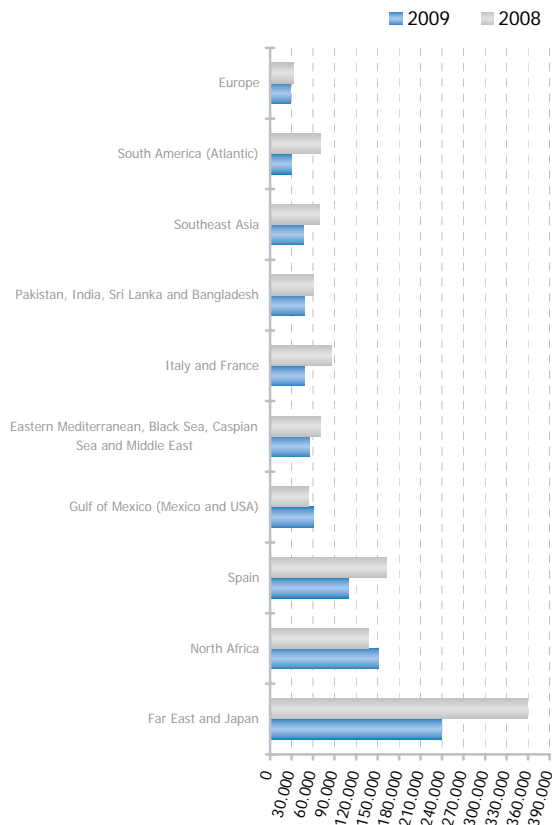
## TRAFFIC BY ORIGIN AND DESTINATION.

Geographical areas (TEU)	Monthly accumulated		
	2008	2009	%
Far East and Japan	594.554	423.871	-28,71%
North Africa	305.961	295.888	-3,29%
Spain	329.220	233.865	-28,96%
Eastern Mediterranean, Black Sea, Caspian Sea and Middle East	207.946	142.449	-31,50%
Pakistan, India, Sri Lanka and Bangladesh	83.246	84.489	1,49%
Gulf of Mexico (Mexico and USA)	82.817	83.153	0,41%
South America (Atlantic)	126.603	77.287	-38,95%
Italy and France	168.586	74.187	-55,99%
Persian Gulf and Arabian Sea	68.179	72.223	5,93%
Southeast Asia	112.958	71.519	-36,69%
Europe	60.476	46.727	-22,73%
North America (Atlantic)	95.522	38.487	-59,71%
Central America and Caribbean	54.022	29.296	-45,77%
Red Sea	31.604	26.124	-17,34%
West Africa	58.917	26.120	-55,67%
South-eastern Africa and Indian Ocean	23.597	18.852	-20,11%
Unknown area (Tare of empty containers)	95.618	16.472	-82,77%
South America (Pacific)	22.700	16.009	-29,48%
Canada (Atlantic) and Great Lakes	19.991	8.641	-56,77%
Australia, New Zealand and Pacific Islands	8.896	8.394	-5,64%
North America (Pacific)	18.067	6.163	-65,89%

Main areas of destination. (TEU)



Main areas of origin. (TEU)



## TRAFFIC BY ORIGIN AND DESTINATION

### Countries by mode of packaging. Load (Transit not included)

Liquid bulk			Dry bulk		
	Tonnes	% a/packaging		Tonnes	% a/packaging
Spain	119.458	32,06%	Netherlands	111.540	15,32%
Portugal	60.595	16,26%	Brazil	101.070	13,88%
Italy	51.106	13,72%	Côte d'Ivoire	99.000	13,60%
Algeria	39.500	10,60%	Puerto Rico	80.611	11,07%
Tunisia	25.297	6,79%	Nigeria	58.945	8,10%
Morocco	19.039	5,11%	Italy	57.748	7,93%
Turkey	18.545	4,98%	Spain	37.829	5,20%
France	10.039	2,69%	France	33.423	4,59%
Israel	9.254	2,48%	Portugal	29.848	4,10%
Cyprus	6.280	1,69%	Mauritania	24.245	3,33%
Greece	5.040	1,35%	Cameroon	20.606	2,83%
United Kingdom	4.201	1,13%	Indonesia	19.900	2,73%
Nigeria	3.563	0,96%	Malta	14.631	2,01%
Jordan	399	0,11%	Ireland	11.262	1,55%
Cuba	244	0,07%	Turkey	10.830	1,49%
Remainder	0	0,00%	Remainder	16.531	2,27%
<b>TOTAL</b>	<b>372.559</b>	<b>100%</b>	<b>TOTAL</b>	<b>728.018</b>	<b>100%</b>

Containerized cargo			Non-containerized cargo		
	TEU	% a/packaging		Tonnes	% a/packaging
China	128.890	20,46%	Spain	2.402.995	48,28%
Spain	109.709	17,41%	Italy	1.956.065	39,30%
United Arab Emirates	38.212	6,06%	Algeria	109.701	2,20%
Turkey	22.930	3,64%	Israel	57.416	1,15%
Algeria	21.672	3,44%	Iran	47.351	0,95%
United States	17.793	2,82%	Syria	40.399	0,81%
Morocco	17.491	2,78%	Saudi Arabia	40.130	0,81%
Hong Kong	17.314	2,75%	United Kingdom	39.402	0,79%
Singapore	14.240	2,26%	Morocco	34.355	0,69%
Saudi Arabia	14.086	2,24%	Turkey	29.770	0,60%
Mexico	13.114	2,08%	Mexico	28.005	0,56%
Brazil	12.836	2,04%	Greece	25.452	0,51%
Greece	10.747	1,71%	Tunisia	21.885	0,44%
Republic of South Africa	9.871	1,57%	Netherlands	20.383	0,41%
Taiwan	9.433	1,50%	Libya	15.111	0,30%
Remainder	171.712	27,25%	Remainder	108.361	2,18%
<b>TOTAL</b>	<b>630.048</b>	<b>100%</b>	<b>TOTAL</b>	<b>4.976.782</b>	<b>100%</b>

## TRAFFIC BY ORIGIN AND DESTINATION

### Countries by mode of packaging. Unload (Transit not included)

Liquid bulk			Dry bulk		
	Tonnes	% a/packaging		Tonnes	% a/packaging
Italy	2.229.484	20,49%	Brazil	1.149.007	35,98%
Qatar	1.717.935	15,79%	Spain	444.770	13,93%
Spain	979.525	9,00%	United States	304.449	9,53%
Nigeria	917.112	8,43%	Ukraine	191.777	6,01%
Algeria	856.716	7,88%	Russian Federation	131.348	4,11%
United States	534.251	4,91%	Romania	101.025	3,16%
France	453.883	4,17%	France	100.957	3,16%
Trinidad and Tobago	333.970	3,07%	United Kingdom	90.687	2,84%
Netherlands	324.719	2,98%	Poland	70.751	2,22%
Libya	284.516	2,62%	Lithuania	69.689	2,18%
Indonesia	257.640	2,37%	Canada	69.677	2,18%
Venezuela	245.110	2,25%	Argentina	59.086	1,85%
Egypt	220.924	2,03%	Bulgaria	49.120	1,54%
Saudi Arabia	174.077	1,60%	Turkey	44.220	1,38%
Papua New Guinea	164.729	1,51%	Serbia and Montenegro	35.138	1,10%
Remainder	1.184.258	10,89%	Remainder	281.379	8,81%
<b>TOTAL</b>	<b>10.878.850</b>	<b>100%</b>	<b>TOTAL</b>	<b>3.193.081</b>	<b>100%</b>

Containerized cargo			Non-containerized cargo		
	TEU	% a/packaging		Tonnes	% a/packaging
China	159.964	28,37%	Italy	1.764.019	51,93%
Spain	94.465	16,75%	Spain	1.324.637	39,00%
Morocco	21.760	3,86%	Japan	48.945	1,44%
Algeria	20.595	3,65%	United Kingdom	39.787	1,17%
India	18.058	3,20%	Russian Federation	27.580	0,81%
Turkey	17.743	3,15%	South Korea	27.274	0,80%
Hong Kong	17.440	3,09%	Tunisia	20.592	0,61%
United States	16.575	2,94%	Netherlands	17.369	0,51%
Vietnam	14.750	2,62%	Morocco	15.177	0,45%
Egypt	13.194	2,34%	Libya	13.160	0,39%
Brazil	12.336	2,19%	Republic of South Africa	12.871	0,38%
Japan	10.191	1,81%	France	10.977	0,32%
Taiwan	9.358	1,66%	Germany	10.152	0,30%
Italy	9.301	1,65%	India	9.940	0,29%
South Korea	8.330	1,48%	Turkey	9.560	0,28%
Remainder	119.872	21,26%	Remainder	44.887	1,32%
<b>TOTAL</b>	<b>563.930</b>	<b>100%</b>	<b>TOTAL</b>	<b>3.396.926</b>	<b>100%</b>

## TRAFFIC BY ORIGIN AND DESTINATION

### Total countries by mode of packaging. (Transit not included)

Liquid bulk			Dry bulk		
	Tonnes	% a/packaging		Tonnes	% a/packaging
Italy	2.280.590	20,27%	Brazil	1.250.077	31,88%
Qatar	1.717.935	15,27%	Spain	482.599	12,31%
Spain	1.098.983	9,77%	United States	304.449	7,76%
Nigeria	920.674	8,18%	Ukraine	191.777	4,89%
Algeria	896.216	7,97%	France	134.380	3,43%
United States	534.251	4,75%	Russian Federation	131.348	3,35%
France	463.922	4,12%	Netherlands	127.110	3,24%
Trinidad and Tobago	333.970	2,97%	United Kingdom	101.221	2,58%
Netherlands	324.719	2,89%	Romania	101.025	2,58%
Libya	284.516	2,53%	Côte d'Ivoire	99.000	2,52%
Indonesia	257.640	2,29%	Puerto Rico	85.896	2,19%
Venezuela	245.110	2,18%	Italy	82.824	2,11%
Egypt	220.924	1,96%	Poland	70.751	1,80%
Saudi Arabia	174.077	1,55%	Lithuania	69.689	1,78%
Papua New Guinea	164.729	1,46%	Canada	69.677	1,78%
Remainder	1.333.152	11,85%	Remainder	619.275	15,79%
<b>TOTAL</b>	<b>11.251.409</b>	<b>100%</b>	<b>TOTAL</b>	<b>3.921.099</b>	<b>100%</b>

Containerized cargo			Non-containerized cargo		
	TEU	% a/packaging		Tonnes	% a/packaging
China	288.854	24,19%	Spain	3.727.632	44,52%
Spain	204.174	17,10%	Italy	3.720.084	44,43%
Algeria	42.267	3,54%	Algeria	109.853	1,31%
Turkey	40.673	3,41%	United Kingdom	79.189	0,95%
United Arab Emirates	39.775	3,33%	Israel	57.417	0,69%
Morocco	39.250	3,29%	Morocco	49.532	0,59%
Hong Kong	34.754	2,91%	Japan	49.497	0,59%
United States	34.368	2,88%	Iran	47.351	0,57%
India	27.350	2,29%	Tunisia	42.477	0,51%
Brazil	25.172	2,11%	Syria	40.399	0,48%
Saudi Arabia	22.223	1,86%	Saudi Arabia	40.130	0,48%
Egypt	21.710	1,82%	Turkey	39.331	0,47%
Mexico	19.941	1,67%	Netherlands	37.752	0,45%
Taiwan	18.791	1,57%	Russian Federation	28.487	0,34%
Singapore	18.664	1,56%	Libya	28.271	0,34%
Remainder	316.014	26,47%	Remainder	276.306	3,30%
<b>TOTAL</b>	<b>1.193.978</b>	<b>100%</b>	<b>TOTAL</b>	<b>8.373.708</b>	<b>100%</b>



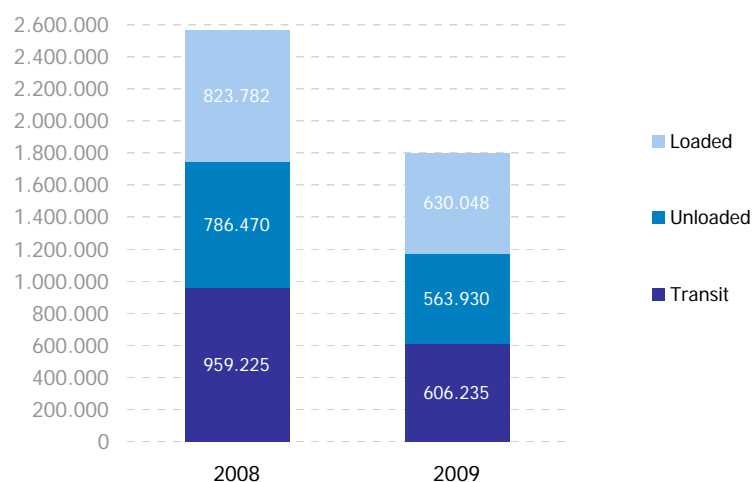
# CONTAINER TRAFFIC

## TEU

Container traffic (TEU)	Monthly accumulated 2008			Monthly accumulated 2009			%
	Domestic	Foreign	Total	Domestic	Foreign	Total	
<b>Total traffic</b>	<b>270.935</b>	<b>2.298.542</b>	<b>2.569.477</b>	<b>206.281</b>	<b>1.593.932</b>	<b>1.800.213</b>	<b>-29,94%</b>
Unloaded	138.024	1.147.144	1.285.168	97.419	806.592	904.011	-29,66%
Loaded	132.911	1.151.398	1.284.309	108.862	787.341	896.203	-30,22%

Breakdown by navigation and operation (TEU)	Monthly accumulated 2008			Monthly accumulated 2009			%
	Domestic	Foreign	Total	Domestic	Foreign	Total	
<b>Unloaded</b>	<b>132.833</b>	<b>690.949</b>	<b>823.782</b>	<b>108.638</b>	<b>521.410</b>	<b>630.048</b>	<b>-23,52%</b>
Full	115.455	435.469	550.924	94.096	371.245	465.341	-15,53%
Empty	17.378	255.480	272.858	14.542	150.166	164.707	-39,64%
<b>Loaded</b>	<b>133.887</b>	<b>652.583</b>	<b>786.470</b>	<b>94.273</b>	<b>469.657</b>	<b>563.930</b>	<b>-28,30%</b>
Full	25.851	507.472	533.323	19.316	376.529	395.845	-25,78%
Empty	108.036	145.111	253.147	74.957	93.129	168.086	-33,60%
<b>Transit</b>	<b>4.215</b>	<b>955.010</b>	<b>959.225</b>	<b>3.371</b>	<b>602.865</b>	<b>606.235</b>	<b>-36,80%</b>
Full	121	824.958	825.079	311	467.670	467.981	-43,28%
Empty	4.094	130.052	134.146	3.060	135.195	138.255	3,06%
<b>Total traffic</b>	<b>270.935</b>	<b>2.298.542</b>	<b>2.569.477</b>	<b>206.281</b>	<b>1.593.932</b>	<b>1.800.213</b>	<b>-29,94%</b>
Full	141.427	1.767.899	1.909.327	113.723	1.215.444	1.329.166	-30,39%
Empty	129.508	530.643	660.151	92.559	378.489	471.047	-28,65%
% Empty	47,80%	23,09%	<b>25,69%</b>	44,87%	23,75%	<b>26,17%</b>	
% Transit	1,56%	41,55%	<b>37,33%</b>	1,63%	37,82%	<b>33,68%</b>	

General cargo distribution by operation. (TEU)

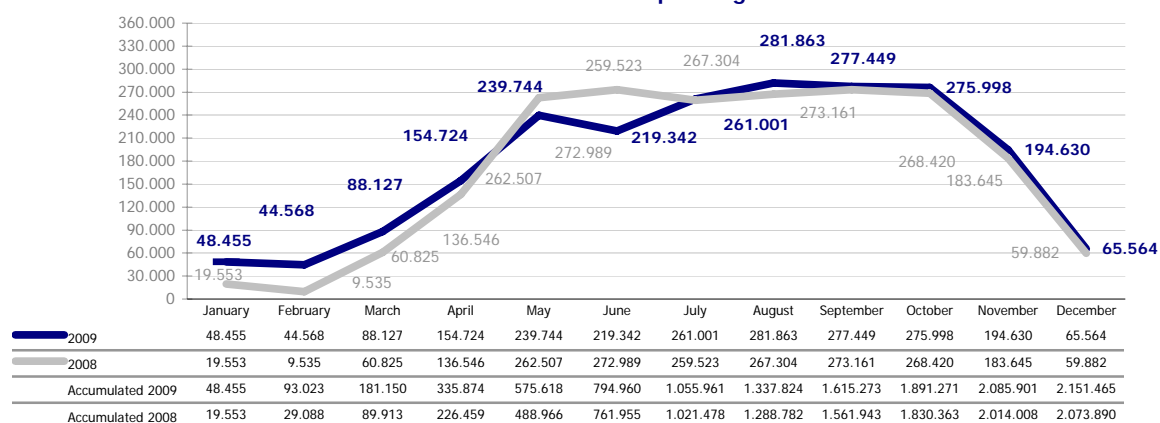


## PASSENGER TRAFFIC

Total passenger traffic (u)	Monthly accumulated		
	2008	2009	%
<b>Total passengers</b>	<b>3.225.866</b>	<b>3.201.696</b>	<b>-0,75%</b>
Embarkation	1.134.483	1.107.549	-2,37%
Disembarkation	1.168.426	1.122.921	-3,89%
Transit	922.957	971.226	5,23%
<b>Regular line ferries</b>	<b>1.151.976</b>	<b>1.050.231</b>	<b>-8,83%</b>
Embarkation	558.263	514.557	-7,83%
Disembarkation	593.713	535.674	-9,78%
<b>Domestic</b>	724.311	579.661	-19,97%
Embarkation	369.204	292.280	-20,84%
Disembarkation	355.107	287.381	-19,07%
<b>European Union</b>	390.138	403.548	3,44%
Embarkation	175.541	192.513	9,67%
Disembarkation	214.597	211.035	-1,66%
<b>Other ferries</b>	37.527	67.022	78,60%
Embarkation	13.518	29.764	120,18%
Disembarkation	24.009	37.258	55,18%
<b>Pleasure cruises</b>	<b>2.073.890</b>	<b>2.151.465</b>	<b>3,74%</b>
Embarkation	576.220	592.992	2,91%
Disembarkation	574.713	587.247	2,18%
Transit	922.957	971.226	5,23%

Total passenger calls. (u)	Monthly accumulated		
	2008	2009	%
<b>Total number of calls</b>	<b>4.207</b>	<b>3.514</b>	<b>-16,47%</b>
<b>Regular Line ferries</b>	3.314	2.715	-18,07%
<b>Pleasure cruises</b>	893	799	-10,53%

Evolution of cruise passenger traffic.

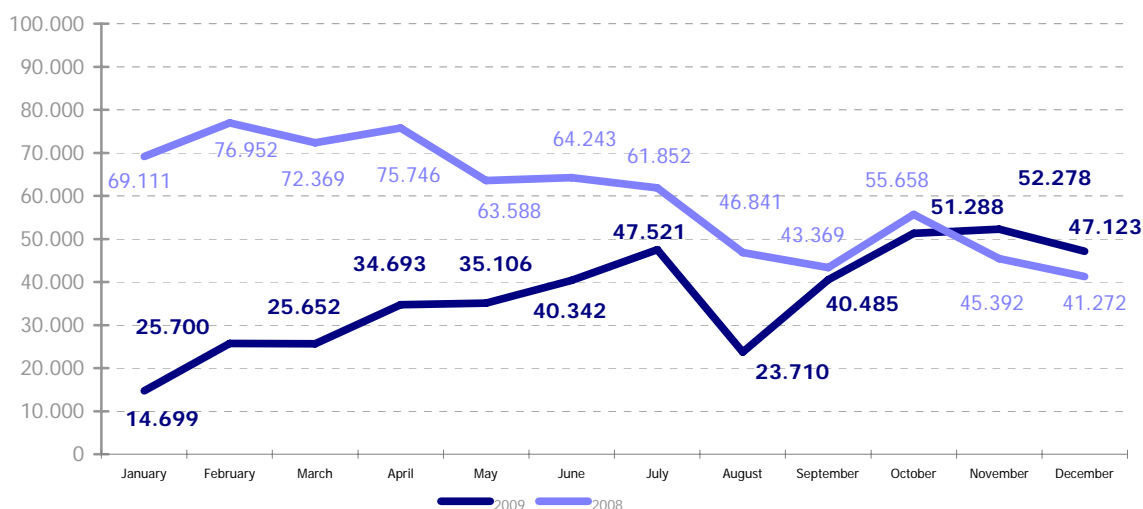


# AUTOMOBILE TRAFFIC

Total automobile traffic (u)	Monthly accumulated		
	2008	2009	%
<b>Automobile traffic by navigation and operation.</b>	<b>716.393</b>	<b>438.597</b>	<b>-38,78%</b>
<b>Domestic</b>	<b>80.284</b>	<b>65.765</b>	<b>-18,08%</b>
Loaded	59.062	43.168	-26,91%
Unloaded	21.222	22.597	6,48%
Transit	0	0	-
<b>Foreign</b>	<b>636.109</b>	<b>372.832</b>	<b>-41,39%</b>
Loaded	322.951	201.638	-37,56%
Unloaded	118.967	94.353	-20,69%
Transit	194.191	76.841	-60,43%

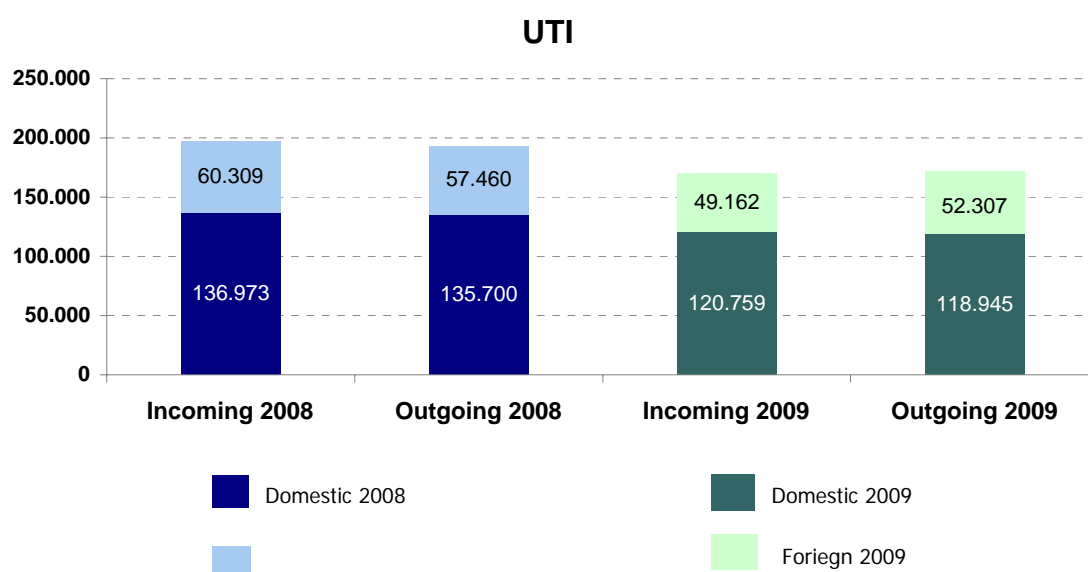
Monthly automobile traffic (u)	Monthly		Accumulated		%	
	2008	2009	2008	2009	Monthly	Accumulated
January	69.111	14.699	69.111	14.699	-78,73%	-78,73%
February	76.952	25.700	146.063	40.399	-66,60%	-72,34%
March	72.369	25.652	218.432	66.051	-64,55%	-69,76%
April	75.746	34.693	294.178	100.744	-54,20%	-65,75%
May	63.588	35.106	357.766	135.850	-44,79%	-62,03%
June	64.243	40.342	422.009	176.192	-37,20%	-58,25%
July	61.852	47.521	483.861	223.713	-23,17%	-53,77%
August	46.841	23.710	530.702	247.423	-49,38%	-53,38%
September	43.369	40.485	574.071	287.908	-6,65%	-49,85%
October	55.658	51.288	629.729	339.196	-7,85%	-46,14%
November	45.392	45.392	675.121	391.474	15,17%	-42,01%
December	41.272	47.123	716.393	438.597	14,18%	-38,78%

Evolution of monthly automobile traffic.



## INTERMODAL TRANSPORT

UTI * (u)	Monthly accumulated 2007			Monthly accumulated 2008			%
	Domestic	Foreign	Total	Domestic	Foreign	Total	
<b>Total UTI by direction</b>	<b>272.673</b>	<b>117.769</b>	<b>390.442</b>	<b>239.704</b>	<b>101.469</b>	<b>341.173</b>	<b>-12,62%</b>
Incoming	136.973	60.309	197.282	120.759	49.162	169.921	-13,87%
Outgoing	135.700	57.460	193.160	118.945	52.307	171.252	-11,34%
Traffic of UTI by navigation and operation	Monthly accumulated 2007			Monthly accumulated 2008			%
	Domestic	Foreign	Total	Domestic	Foreign	Total	
<b>Total</b>	<b>272.673</b>	<b>117.769</b>	<b>390.442</b>	<b>239.704</b>	<b>101.469</b>	<b>341.173</b>	<b>-12,62%</b>
Full	166.372	110.852	277.224	142.532	94.015	236.547	-14,67%
Empty	106.301	6.917	113.218	97.172	7.454	104.626	-7,59%
<b>Loaded</b>	<b>135.641</b>	<b>57.424</b>	<b>193.066</b>	<b>118.921</b>	<b>52.307</b>	<b>171.228</b>	<b>-11,31%</b>
Full	131.863	55.101	186.965	114.808	50.362	165.170	-11,66%
Empty	3.778	2.323	6.101	4.113	1.945	6.058	-0,70%
<b>Unloaded</b>	<b>136.921</b>	<b>60.308</b>	<b>197.229</b>	<b>120.735</b>	<b>49.161</b>	<b>169.896</b>	<b>-13,86%</b>
Full	34.398	55.714	90.112	27.679	43.652	71.331	-20,84%
Empty	102.523	4.594	107.117	93.056	5.509	98.565	-7,98%
<b>Transit</b>	<b>111</b>	<b>37</b>	<b>148</b>	<b>48</b>	<b>1</b>	<b>49</b>	<b>-66,89%</b>
Full	111	37	148	45	1	46	-68,92%
Empty	0	0	0	3	0	3	-



UTI\*: All those means of unitization, self-propelled or otherwise, that are directly or indirectly used as a means of land transport (e.g. trailers, platforms, trucks, freezer trucks, etc.) are considered as UTI. Containers are not considered to be included.

## VESSELS TRAFFIC

Vessel traffic	Monthly accumulated		
	2008	2009	%
Number of calls	9.581	8.418	-12,14%
Tonnage	258.670.508	245.272.018	-5,18%
Average tonnes	26.998	29.137	7,92%

Type of vessels	Monthly accumulated					
	2008		2009		%	
	Calls	GT	Calls	GT	Calls	GT
<b>Total</b>	<b>9.581</b>	<b>258.670.508</b>	<b>8.418</b>	<b>245.272.018</b>	<b>-12,14%</b>	<b>-5,18%</b>
Car-carrier	589	19.240.171	269	9.581.508	-54,33%	-50,20%
Cargo (LO-LO)	693	3.556.364	736	3.572.543	6,20%	0,45%
Refrigerators	27	352.802	4	45.068	-85,19%	-87,23%
Bulk carriers	188	2.396.962	128	2.207.754	-31,91%	-7,89%
Passenger	893	55.678.347	799	59.596.272	-10,53%	7,04%
Oil tankers	10	269.510	12	323.412	20,00%	20,00%
Container	2.394	72.518.584	2.386	70.211.056	-0,33%	-3,18%
RO-RO	558	12.579.005	445	10.074.676	-20,25%	-19,91%
Tanks	915	17.372.400	924	17.009.342	0,98%	-2,09%
Train ferries	3.314	74.706.363	2.715	72.650.387	-18,07%	-2,75%

Type of vessels (Monthly accumulated)	Domestic		Foreign	
	Calls	GT	Calls	GT
<b>Total</b>	<b>2.574</b>	<b>49.190.258</b>	<b>5.844</b>	<b>196.081.760</b>
Car-carrier	2	36.778	267	9.544.730
Cargo (LO-LO)	56	356.873	680	3.215.670
Refrigerators	0	0	4	45.068
Bulk carriers	27	100.875	101	2.106.879
Passenger	9	295.024	790	59.301.248
Oil tankers	0	0	12	323.412
Container	280	4.106.201	2.106	66.104.855
RO-RO	115	1.680.472	330	8.394.204
Tanks	146	985.925	778	16.023.417
Train ferries	1.939	41.628.110	776	31.022.277

Distribution by type of vessel.

